

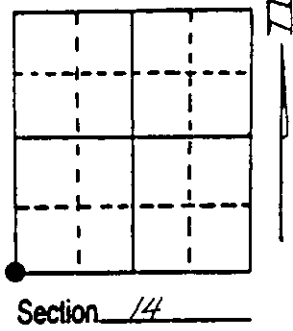
U.S. PUBLIC LAND SURVEY MONUMENT RECORD

Note: This form is intended and designed to fulfill all requirements of Wisconsin Administrative Code, Chapter A-E 7.08 U.S. Public Land Survey Monument Record (3) (a) (b) (c) (d) (e) (f) (g) (h) (i). An additional sheet may be added if necessary to conform with said requirements.

(a) Corner location: Township 37 North
 Range 5 East/West

Town/City/Village Little Rice

County Oneida



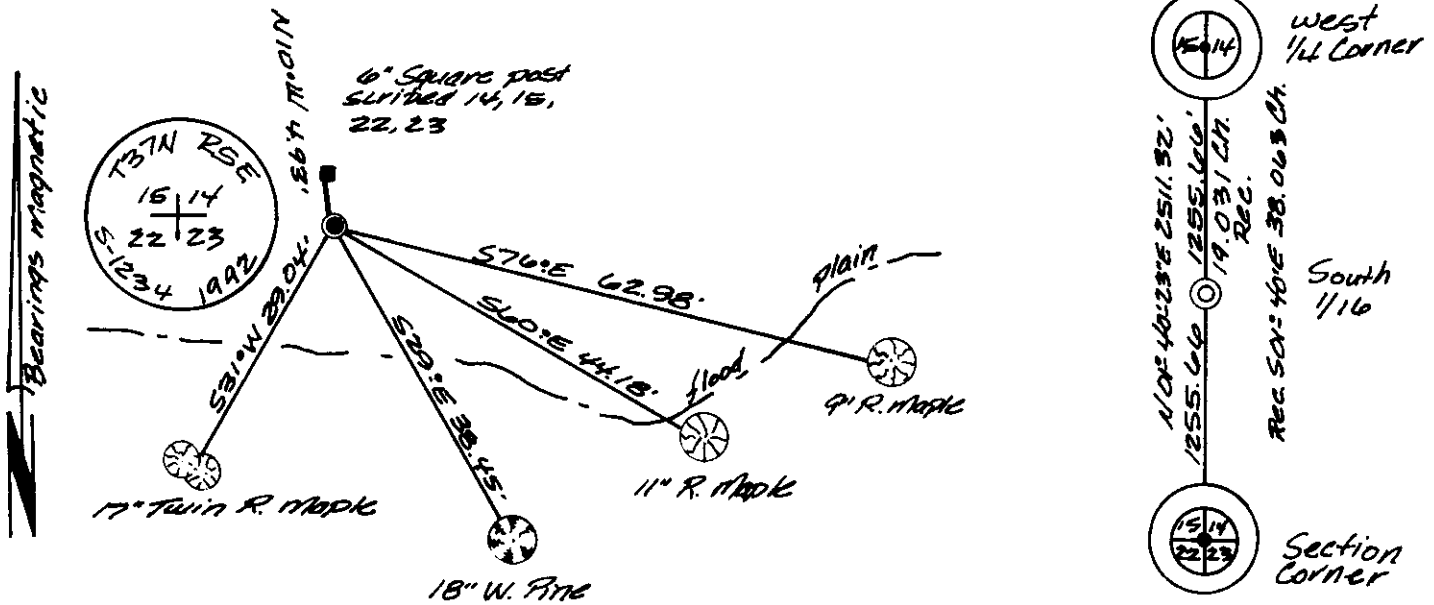
(b) (f) (g) (h) Description of monument found at this corner and if it was accepted, state all evidence (material, testimonial, occupational, plats, records, other monuments) used as a basis for accepting. If not accepted or if nothing was found, state evidence used as basis for establishing location. If reestablished through lost corner proportionate methods, indicate all monuments, distances and directions used to establish. Indicate type of monument found or set and sign post.

June 14th, 1863 - Joseph H. Jenkins, Deputy Surveyor, set post to sections 14, 15, 20, & 23 witnessed by two bearing trees: a 7" Birch bearing N58°W, 21 links and an 8" Fir bearing N15°E, 14 links.

April 13th, 1978 - Owens Illinois map identifies the section corner as being an "iron pipe or cap" and shows a tie to the 1/4 corner common to Sections 14 and 15 and to the S 1/16 corner common to Sections 14 and 15..

May 5th, 1992 - James D. Rein, RLS No. 1234, found no evidence of corner. Set capped 3/4" dia. x 70" long drivable aluminum monument by doubling through the S 1/16 corner from the W 1/4 corner. Made reference ties as shown in plan view. Set plastic post 1 foot West of monument. Corner position is located in food plain area of the Willow Flowage.

(c) (d) (e) Plan view of corner with ties to at least 4 witness monuments. If in disagreement with previously established corner, show the distances between the two corners and also indicate the ties to the disputed corner.



(i) I, James D. Rein, RLS No. 1234
 (type or print name) certify that the corner location on this record was determined by me or under my direction and control and that this U.S. Public Land Survey Monument Record is correct and complete to the best of my knowledge and belief.

James D. Rein Signature
 June 18th, 1992 Date



Stamp
 3705150000

Index No. N-17