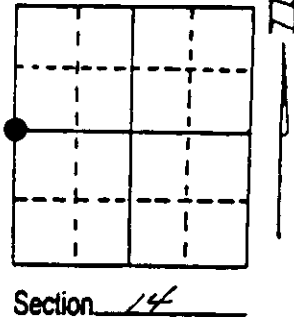


U.S. PUBLIC LAND SURVEY MONUMENT RECORD

Note: This form is intended and designed to fulfill all requirements of Wisconsin Administrative Code, Chapter A-E 7.08 U.S. Public Land Survey Monument Record (3) (a) (b) (c) (d) (e) (f) (g) (h) (i). An additional sheet may be added if necessary to conform with said requirements.

(a) Corner location: Township 37 North
 Range 6 East/West

Town/City/Village Little Rice
 County Oneida



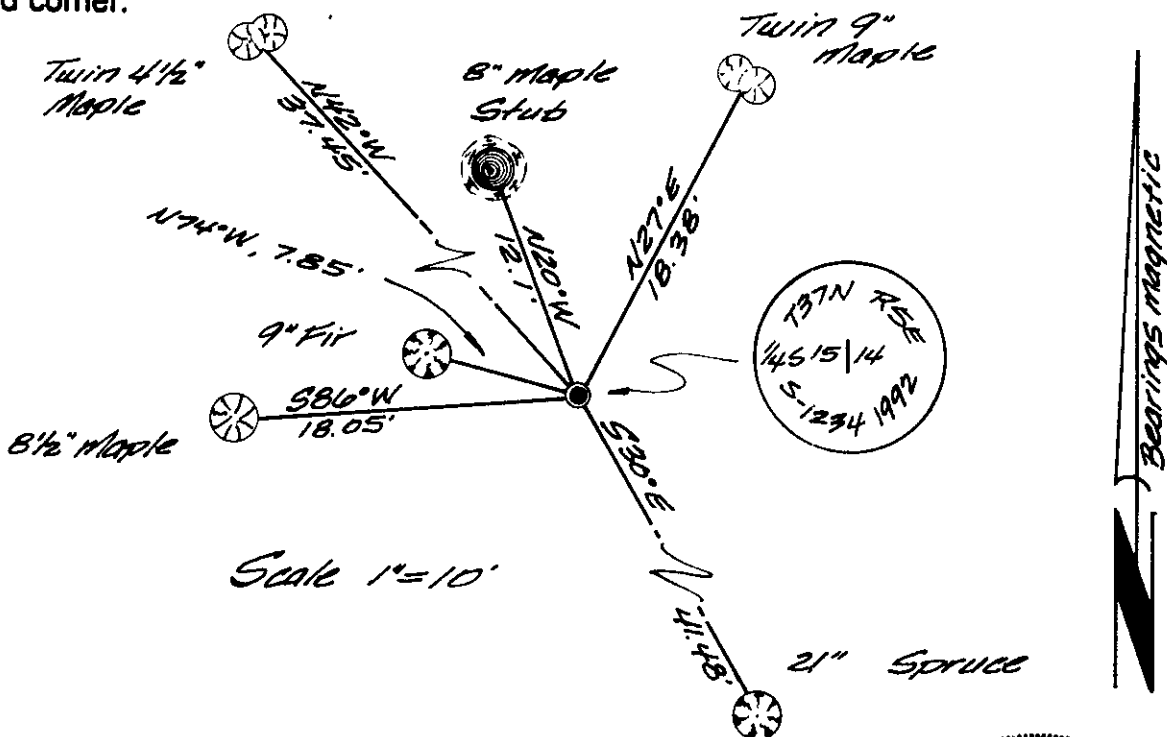
(b) (f) (g) (h) Description of monument found at this corner and if it was accepted, state all evidence (material, testimonial, occupational, plats, records, other monuments) used as a basis for accepting. If not accepted or if nothing was found, state evidence used as basis for establishing location. If reestablished through lost corner proportionate methods, indicate all monuments, distances and directions used to establish. Indicate type of monument found or set and sign post.

June 14th, 1863 - Joseph H. Jenkins, Deputy Surveyor, set $\frac{1}{4}$ " Post witnessed by two bearing trees: an 8" Aspen bearing N84°W, 13 links and a 16" Aspen bearing S57°E, 22 links.

April 13th, 1978 - Owens Illinois Map identifies that they found the $\frac{1}{4}$ " post lying down and rotted off. Set iron pipe in it's place. Referenced the iron pipe to a 6" Maple bearing N24°W, 12.1', and to a 6" Maple bearing S82°W, 17.9'

May 5th, 1992 - James D. Rein, RLS No. 1234, recovered a $1\frac{1}{4}$ " dia. iron pipe referenced by three bearing trees: an 8 $\frac{1}{2}$ " Maple bearing S86°W, 18.05'; an 8" Maple stub bearing N20°W, 12.1'; and a 9" Fir (with metal tag) bearing N74°W, 7.85'. Replaced the $1\frac{1}{4}$ " dia. iron pipe with a capped 2" dia. aluminum monument. Made reference ties as shown in plan view.

(c) (d) (e) Plan view of corner with ties to at least 4 witness monuments. If in disagreement with previously established corner, show the distances between the two corners and also indicate the ties to the disputed corner.



(i) I, James D. Rein, RLS No. 1234
 (type or print name) certify that the corner location on this record was determined by me or under my direction and control and that this U.S. Public Land Survey Monument Record is correct and complete to the best of my knowledge and belief.

James D. Rein Signature
 June 18th, 1992 Date

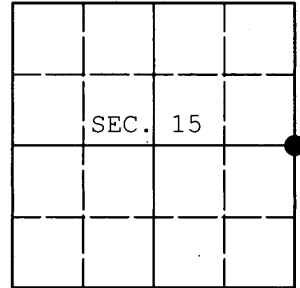


Stamp
 3705152000

U. S. PUBLIC LAND SURVEY MONUMENT RECORD

Note: This form is intended and designed to fulfill all requirements of Wisconsin Administrative Code, Chapter A-E 7.08 U.S. Public Land Survey Monument Record (3) (a) (b) (c) (d) (e) (f) (g) (h) (i). An additional sheet may be added if necessary to conform with said requirements.

(a) CORNER LOCATION: WISCRS (Oneida County)
1/4 Cor. of Secs. 14 & 15 N: 185,982.43 USft
Township 37 North E: 155,311.95 USft
Range 5 East of the 4th P.M. Datum: NAD 1983(2011)
Town of Little Rice County of Oneida



(b) HISTORY OF ORIGINAL CORNER ESTABLISHMENT

Original Surveyor: Original Accessories:
Date of Survey: Commenced:
Completed:

(b)(f)(g)(h) Description of monument found at this corner and if it was accepted, state all evidence (material, testimonial, occupational, plats, records, other monuments) used as a basis for accepting. If not accepted or if nothing was found, state evidence used as basis for establishing location. If re-established through lost corner proportionate methods, indicate all monuments, distances and directions used to establish. Indicate type of monument and sign post found or set.

NOTE: This is a perpetuation of a previous USPLS Monument Record by James D. Rein, RLS dated June 18, 1992 and filed in the office of the Oneida County Register of Deeds. A complete history of the corner can be found on the previous monument record. I accept the previous location as a true and faithful perpetuation or reestablishment of the original corner location and further perpetuate it as follows.

July 24, 2014: I found and accepted Rein's monument, a 2-1/2" diam. aluminum pipe with 3-1/4" diam. Oneida Co. aluminum cap projecting 3" above the ground. Rein's accessories were found in substantial agreement with his previous record and were not remeasured as the sole purpose of this work is to report the coordinates of the corner point.

The coordinates shown were derived from a static GPS observation referenced to the WISCORS network.

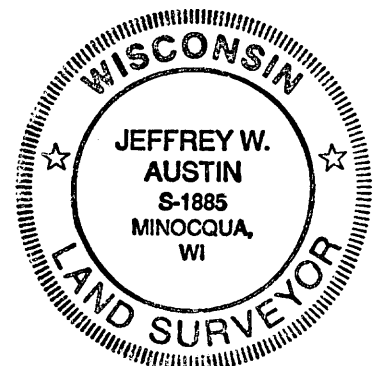
(c)(d)(e) Plan view of corner with ties to at least 4 witness monuments. If in disagreement with previously established corner, show the distances between the two corners and also indicate the ties to the disputed.

REGISTER OF DEEDS OFFICE
ONEIDA COUNTY
FILED

OCT 13 2014

AT O'CLOCK M
KYLE J. FRANSON
REGISTER OF DEEDS

(i) I, Jeffrey W. Austin, Registered Land Surveyor No. S-1885, hereby certify that the corner location on this record was determined by me or under my direction and control and that this U.S. Public Land Survey Monument Record is correct and complete to the best of my knowledge and belief.



Signature

Date

SEP - 7, 2014

3705152000 (INDEX NO. L-17)