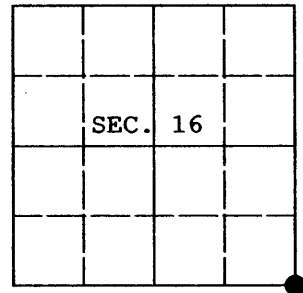


**U.S. PUBLIC LAND SURVEY MONUMENT RECORD**

Note: This form is intended and designed to fulfill all requirements of Wisconsin Administrative Code, Chapter A-E 7.08 U.S. Public Land Survey Monument Record (3) (a) (b) (c) (d) (e) (f) (g) (h) (i). An additional sheet may be added if necessary to conform with said requirements.

(a) CORNER LOCATION: Plane Coordinates  
 Cor. of Secs. 15, 16, 21, 22 X:  
 Township 37 North Y:  
 Range 5 East of the 4th P.M. Datum:  
 Town of Little Rice County of Oneida



(b) HISTORY OF ORIGINAL CORNER ESTABLISHMENT

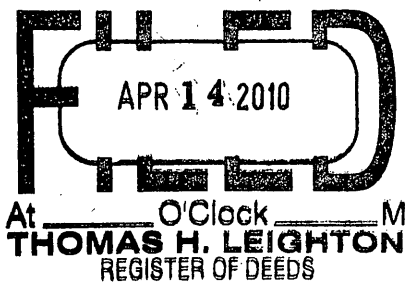
Original Surveyor: Joseph Jenkins Original Accessories:  
 Date of Survey: Commenced June, 1865 Aspen 8" N.32°W., 22 lks.  
 Completed June, 1865 Y. Pine 14" N.79°W., 17 lks.

(b) (f) (g) (h) Description of monument found at this corner and if it was accepted, state all evidence (material, testimonial, occupational, plats, records, other monuments) used as a basis for accepting. If not accepted or if nothing was found, state evidence used as basis for establishing location. If re-established through lost corner proportionate methods, indicate all monuments, distances and directions used to establish. Indicate type of monument and sign post found or set.

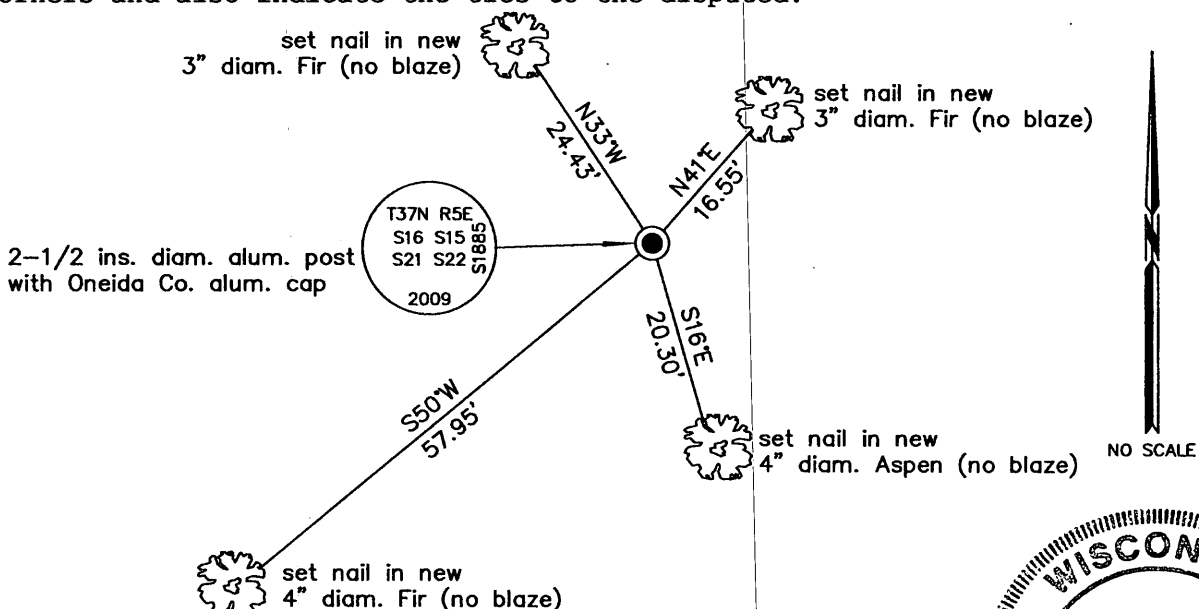
Date unknown: WVIC Book 86, on page 59, at the corner and found "one OBT stump down" and made new Y. Pine 8" N87°E, 20 lks.

May 22, 2009: I found and accepted a 1-1/4 ins. diam. iron pipe surrounded by a rock cairn. I found the WVIC red pine stump and the GLO red pine stump hole at record bearing and distance. Over the pipe, I set an aluminum post, 30 ins. long, 2-1/2 ins. diam. with Oneida Co. aluminum cap projecting 6 ins. above the ground. I established accessories as shown below and set a white plastic sign post bearing Northeast, 1-1/2 ft. dist.

REGISTER OF DEEDS OFFICE  
 ONEIDA COUNTY, WIS.



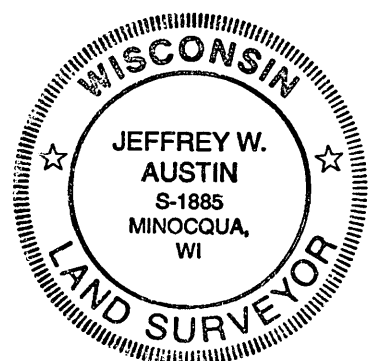
(c) (d) (e) Plan view of corner with ties to at least 4 witness monuments. If in disagreement with previously established corner, show the distances between the two corners and also indicate the ties to the disputed.



(i) I, Jeffrey W. Austin, Registered Land Surveyor No. S-1885, hereby certify upon honor that the corner location on this record was determined by me or under my direction and control and that this U.S. Public Land Survey Monument Record is correct and complete to the best of my knowledge and belief.

Signature

MAR 30, 2010  
 Date



3705160000

INDEX NO. N-13