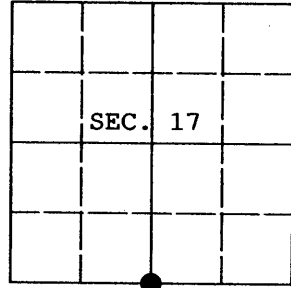


At _____ O'Clock _____ M

U.S. PUBLIC LAND SURVEY MONUMENT RECORD

Note: This form is intended and designed to fulfill all requirements of Wisconsin Administrative Code, Chapter A-E 7.08 U.S. Public Land Survey Monument Record (3) (a) (b) (c) (d) (e) (f) (g) (h) (i). An additional sheet may be added if necessary to conform with said requirements.

(a) CORNER LOCATION: Plane Coordinates
1/4 Cor. of Secs. 17 & 20 X:
Township 37 North Y:
Range 5 East of the 4th P.M. Datum:
Town of Little Rice County of Oneida



(b) HISTORY OF ORIGINAL CORNER ESTABLISHMENT

Original Surveyor: Joseph Jenkins
Date of Survey: Commenced June, 1865
Completed June, 1865

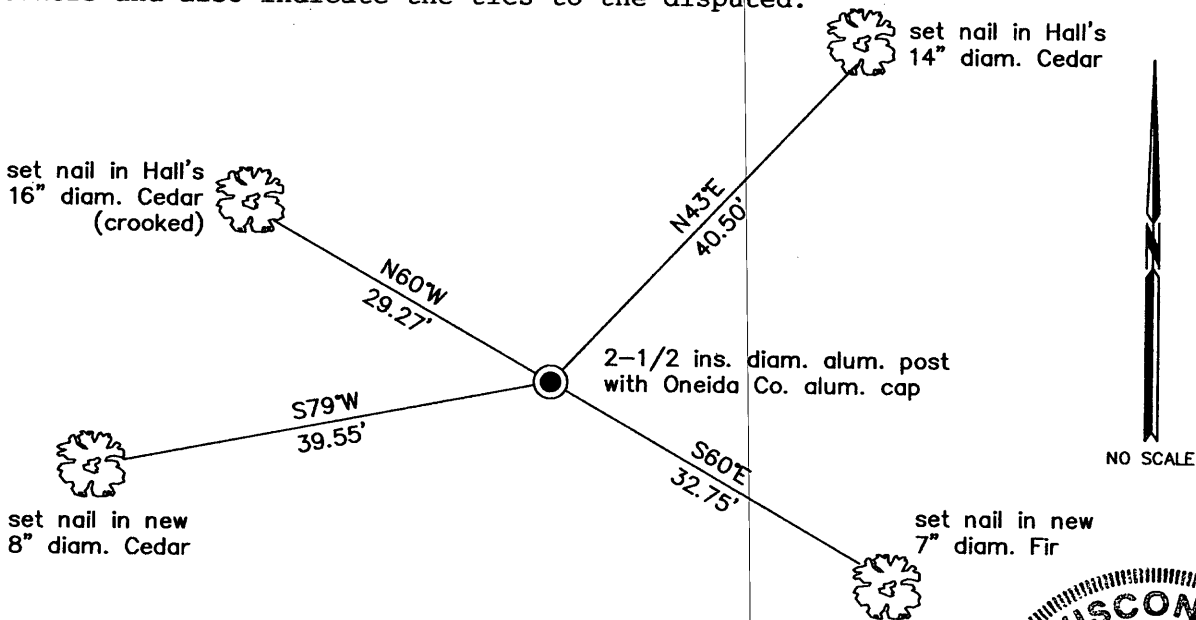
Original Accessories:
Tamarack 8" S.74°E., 5 lks.
Tamarack 12" N.40°W., 12 lks.

(b) (f) (g) (h) Description of monument found at this corner and if it was accepted, state all evidence (material, testimonial, occupational, plats, records, other monuments) used as a basis for accepting. If not accepted or if nothing was found, state evidence used as basis for establishing location. If re-established through lost corner proportionate methods, indicate all monuments, distances and directions used to establish. Indicate type of monument and sign post found or set.

November 5, 1938: CCC Book 10 on page 54, Hall accepts small square stake in center of cruiser marks witnessed by one of the GLO tamaracks. New trees: cedar (crooked) 11" N64°W, 0.441 and cedar 10" N43°E, 0.615.

November 12, 2009: I found both of Hall's cedar alive and in good health. I intersected the record distances from these trees and found the remains of Hall's wood post and distinct staining/decay in the soil at the place the post originally stood. In the post hole, I set an aluminum post, 60 ins. long, 2-1/2 ins. diam. with Oneida Co. aluminum cap projecting 18 ins. above the ground. I established accessories as shown below and set a white plastic sign post bearing Northeast, 1 ft. dist.

(c) (d) (e) Plan view of corner with ties to at least 4 witness monuments. If in disagreement with previously established corner, show the distances between the two corners and also indicate the ties to the disputed.



(i) I, Jeffrey W. Austin, Registered Land Surveyor No. S-1885, hereby certify upon honor that the corner location on this record was determined by me or under my direction and control and that this U.S. Public Land Survey Monument Record is correct and complete to the best of my knowledge and belief.

Signature

Date

MAR 30, 2010



3705170020

INDEX NO. N-7