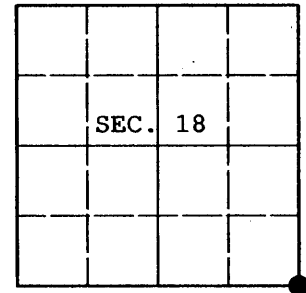


**U. S. PUBLIC LAND SURVEY MONUMENT RECORD**

Note: This form is intended and designed to fulfill all requirements of Wisconsin Administrative Code, Chapter A-E 7.08 U.S. Public Land Survey Monument Record (3) (a) (b) (c) (d) (e) (f) (g) (h) (i). An additional sheet may be added if necessary to conform with said requirements.

(a) CORNER LOCATION: Plane Coordinates  
 Cor. of Secs. 17, 18, 19, 20 X:  
 Township 37 North Y:  
 Range 5 East of the 4th P.M. Datum:  
 Town of Little Rice County of Oneida



(b) HISTORY OF ORIGINAL CORNER ESTABLISHMENT

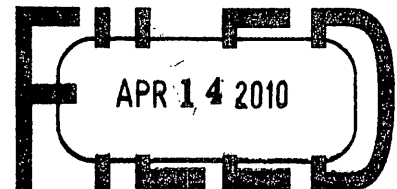
Original Surveyor: Joseph Jenkins Original Accessories:  
 Date of Survey: Commenced June, 1865 Aspen 12" N.14°W., 12 lks..  
 Completed June, 1865 Birch 10" N.50°E., 9 lks.

(b) (f) (g) (h) Description of monument found at this corner and if it was accepted, state all evidence (material, testimonial, occupational, plats, records, other monuments) used as a basis for accepting. If not accepted or if nothing was found, state evidence used as basis for establishing location. If re-established through lost corner proportionate methods, indicate all monuments, distances and directions used to establish. Indicate type of monument and sign post found or set.

September 11, 1939: CCC Book 10, on page 55 Hall notes the corner is marked with an "iron rod with welded top" from which: Y.Pine 4" N20°W, 1.028 and a Y.Pine 2" S62°E, 0.077.

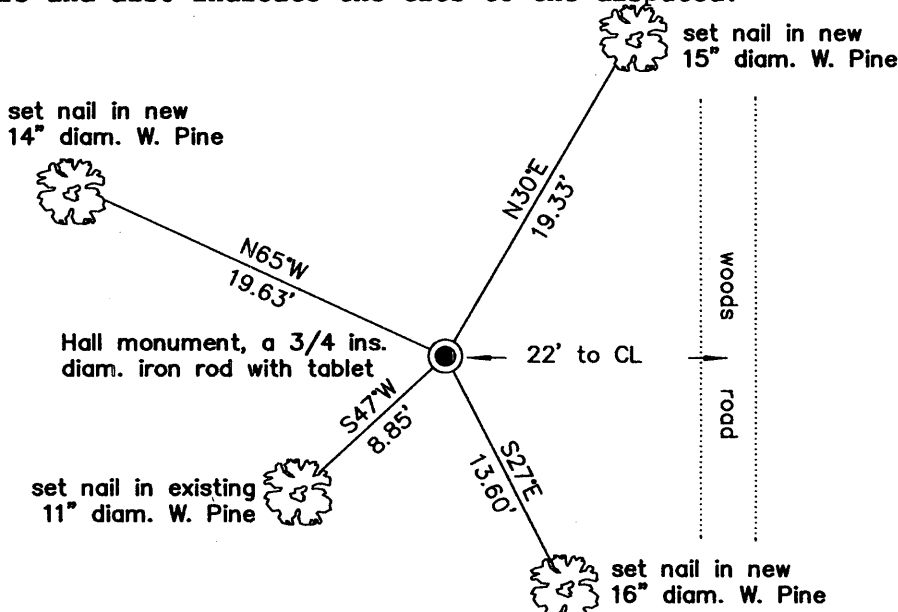
May 11, 2009: I found and accepted Hall's monument, a 3/4 ins. diam. iron rod with 2-1/2 ins. diam. tablet projecting 6 ins. above the ground. I found both of Hall's bearing trees, now stumps at his record bearing and distance. I established accessories as shown below and set a white plastic sign post bearing Northwest, 1 ft. dist.

REGISTER OF DEEDS OFFICE  
ONEIDA COUNTY, WIS.



At \_\_\_\_\_ O'Clock \_\_\_\_\_ M  
**THOMAS H. LEIGHTON**  
REGISTER OF DEEDS

(c) (d) (e) Plan view of corner with ties to at least 4 witness monuments. If in disagreement with previously established corner, show the distances between the two corners and also indicate the ties to the disputed.



(i) I, Jeffrey W. Austin, Registered Land Surveyor No. S-1885, hereby certify upon honor that the corner location on this record was determined by me or under my direction and control and that this U.S. Public Land Survey Monument Record is correct and complete to the best of my knowledge and belief.



INDEX NO. N-5

Signature

MAR 30, 2010  
Date

3705180000