

U.S. PUBLIC LAND SURVEY MONUMENT RECORD

REGISTER OF DEEDS OFFICE
ONEIDA COUNTY
FILED

MAY 25 2017

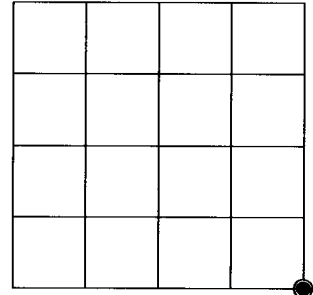
Note: This form is intended and designed to fulfill all requirements of the Wisconsin Administrative Code, Chapter A-E 7.08 U.S. Public Land Monument Record (3)(a)(b)(c)(d)(e)(f)(g)(h)(i). An additional sheet may be added if necessary to conform with said requirements.

(a) CORNER LOCATION: WISCRS - Oneida County
Southeast Corner of Section 19 North: 178169.132 USft
Township 37 North East: 139198.354 USft
Range 5 East Latitude: 45° 40' 26.92096" N
Town of Little Rice Longitude: 89° 53' 58.65296" W
County of Oneida Datum: NAD 83(2011)
GNSS Method: Static - Direct
GNSS Control: WISCORS VRS
Record North: 178169.123 USft
Record East: 139198.322 USft
Record Datum: NAD 83(1991)

AT O'CLOCK
KYLE J. FRANCO
REGISTER OF DEEDS

(RECORDING AREA)

SECTION 19



(b) HISTORY OF ORIGINAL CORNER ESTABLISHMENT

Original Surveyor: Joseph H. Jenkins
Date of Survey: Commenced June 12th, 1863
Completed June 24th, 1863
Original B.T.'S: Hemlock 10" N 27°W, 40 lks.
Yellow Pine 10" N 11°E 17 lks.

(f)(g)(h) DESCRIPTION OF MONUMENT FOUND AT THIS CORNER AND IF IT WAS ACCEPTED, STATE ALL EVIDENCE (MATERIAL, TESTIMONIAL, OCCUPATIONAL, PLATS, RECORD, OTHER MONUMENTS) USED AS A BASIS FOR ESTABLISHING LOCATION. IF NOT ACCEPTED OR IF NOTHING WAS FOUND, STATE EVIDENCE USED AS BASIS FOR ESTABLISHING LOCATION. IF REESTABLISHED THROUGH LOST CORNER PROPORTIONATE METHODS, INDICATE ALL MONUMENTS, DISTANCES AND DIRECTIONS USED TO ESTABLISH. INDICATE TYPE OF MONUMENT AND SIGN POST FOUND OR SET.

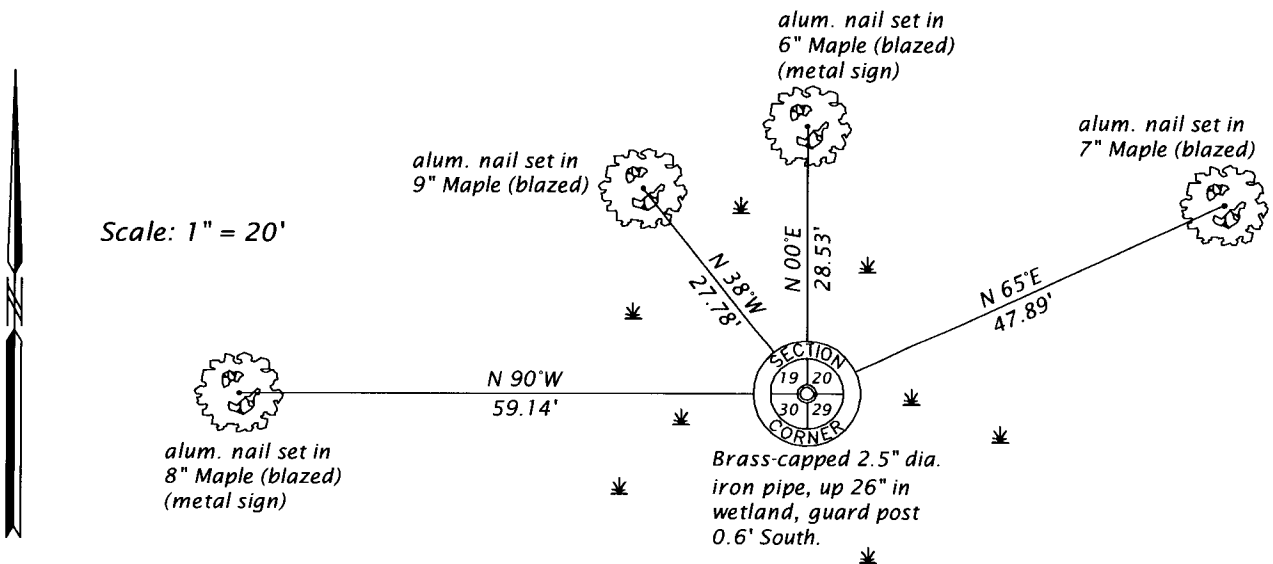
November 7, 1938 - Ray H. Hall, Camp Engineer and crew, CCC Book 10, page 55, searching for corners along the east line of Section 19 found a post at 80.147 chains south of northeast corner, no sign of original corner.

1953 - Owens-Illinois, map of Section 19, T37N, R5E, filed in NEPCO Book 1, pages 140 and 141 legends this corner "IRON PIPE OR CAP", referenced by a 7" Balsam N23°E, 33.3 feet; Ownes-Illinois, similar map filed in NEPCO Book 1, pages 153 and 154, for Section 29, T37N, R5E, surveyed in 1954, includes the same legend.

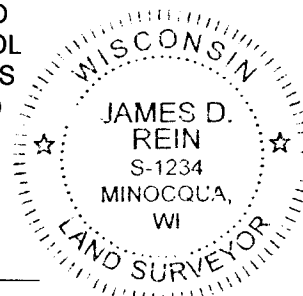
April 19, 2017 - James D. Rein, PLS No. 1234, we recovered a brass capped 2.5" diam. iron pipe. There is no remaining original corner evidence, thus I accept the monument position as a good faith re-establishment of the corner, by proportionate measurement. We made reference ties to bearing trees as shown in the plan.

The coordinate value shown has been verified by at least one of the following methods: 1) comparison to a previously GPS determined published value; 2) the value is the average of two or more GPS observations at a markedly different time; 3) one or more distances were measured back to the GPS observed corner from temporary GPS observed offset locations.

(c)(d)(e) PLAN VIEW OF CORNER WITH TIES TO AT LEAST 4 WITNESS MONUMENTS. IF IN DISAGREEMENT WITH PREVIOUSLY ESTABLISHED CORNER, SHOW THE DISTANCE BETWEEN THE TWO CORNERS AND ALSO INDICATE THE TIES TO THE DISPUTED CORNER.



(i) I, JAMES D. REIN, PROFESSIONAL LAND SURVEYOR NO. S-1234 HEREBY CERTIFY THAT THE CORNER LOCATION ON THIS RECORD WAS DETERMINED BY ME OR UNDER MY DIRECTION AND CONTROL AND THAT THIS U.S. PUBLIC LAND SURVEY MONUMENT RECORD IS CORRECT AND COMPLETE TO THE BEST OF MY KNOWLEDGE AND BELIEF.



James D. Rein
SIGNATURE

5-15-17
DATE

INDEX NO. R - 5
3705190000