

# U.S. PUBLIC LAND SURVEY MONUMENT RECORD

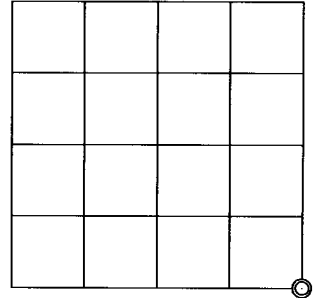
REGISTER OF DEEDS OFFICE  
ONEIDA COUNTY  
**FILED**

**MAY 25 2017**

AT            O'CLOCK            M  
KYLE J. FRANSON  
REGISTER OF DEEDS

(RECORDING AREA)

SECTION 24



(a) CORNER LOCATION: WISCRS - Oneida County  
Southeast Corner of Section 24 North: 178053.311 USft  
Township 37 North East: 165745.276 USft  
Range 5 East Latitude: 45° 40' 26.77042" N  
Town of Little Rice Longitude: 89° 47' 44.82173" W  
County of Oneida Datum: NAD 83(2011)  
GNSS Method: RTK - Direct  
GNSS Control: WISCRS VRS  
Record North: 178053.481 USft  
Record East: 165745.288 USft  
Record Datum: NAD 83(1991)

(b) HISTORY OF ORIGINAL CORNER ESTABLISHMENT

Original Surveyor: Alfred Millard  
Date of Survey: August, 1860

Original B.T.'S: Spruce Pine 10" S 20°W, 26 lks. Spruce Pine 8" S 8°E, 28 lks.  
Aspen 10" N 38°E 22 lks. Aspen 7" N 77-1/2°W 19 lks.

(f)(g)(h) DESCRIPTION OF MONUMENT FOUND AT THIS CORNER AND IF IT WAS ACCEPTED, STATE ALL EVIDENCE (MATERIAL, TESTIMONIAL, OCCUPATIONAL, PLATS, RECORD, OTHER MONUMENTS) USED AS A BASIS FOR ESTABLISHING LOCATION. IF NOT ACCEPTED OR IF NOTHING WAS FOUND, STATE EVIDENCE USED AS BASIS FOR ESTABLISHING LOCATION. IF REESTABLISHED THROUGH LOST CORNER PROPORTIONATE METHODS, INDICATE ALL MONUMENTS, DISTANCES AND DIRECTIONS USED TO ESTABLISH. INDICATE TYPE OF MONUMENT AND SIGN POST FOUND OR SET.

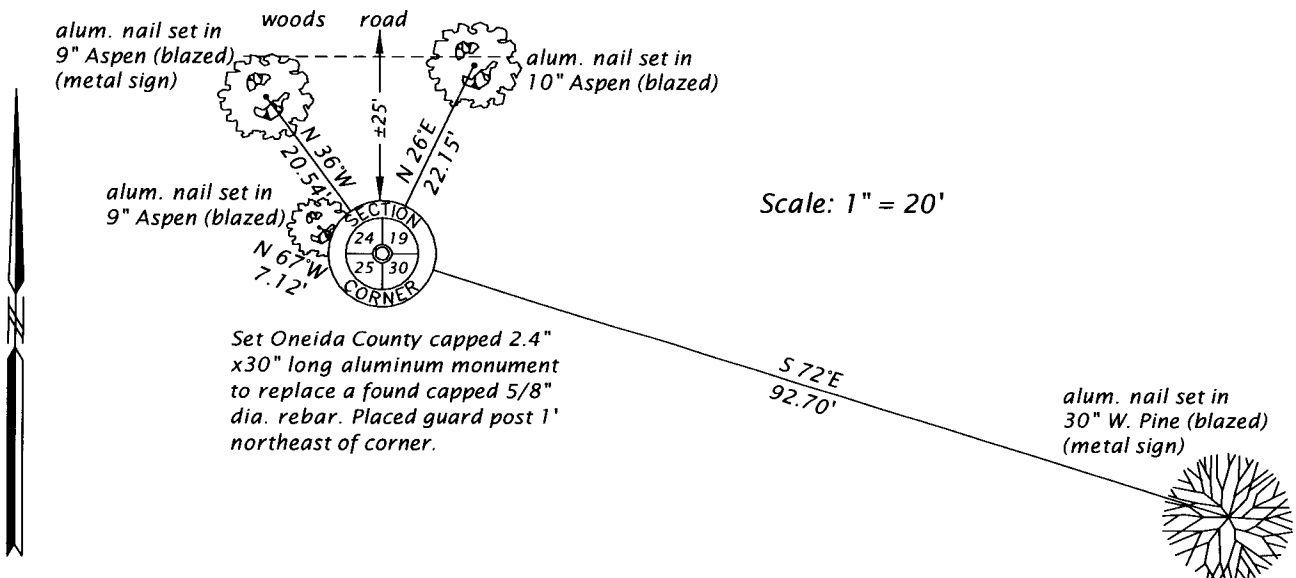
1960's - Owens-Illinois, map of Section 24, T37N, R5E, filed in NEPCO Book 1, pages 145 and 146, legends this corner "BY OTHERS";  
Owens-Illinois, similar map filed in NEPCO Book 1, pages 187 and 188, for Section 19, T37N, R6E, surveyed in 1977, legends this corner "Found in 1964".

Stephen J. Favorite, RLS No. 1616, Favorite Surveying, Inc., Map No. 2002070, filed as A1236, in the county surveyors office, describes this corner as "1/2" iron bar found".

April 14, 2017 - James D. Rein, PLS No. 1234, we recovered a capped 5/8" x 18" long rebar harmonious with surveyor Favorite's record. Although we find no remaining original corner evidence, I accept this monument, as the best available evidence of the original corner position. We replace the rebar with an Oneida County capped, 2.4" dia. x 30" long, aluminum monument and made reference ties to bearing trees as shown in the plan.

The coordinate value shown has been verified by at least one of the following methods: 1) comparison to a previously GPS determined published value; 2) the value is the average of two or more GPS observations at a markedly different time; 3) one or more distances were measured back to the GPS observed corner from temporary GPS observed offset locations.

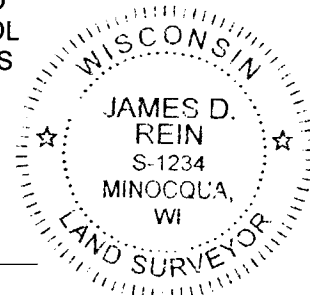
(c)(d)(e) PLAN VIEW OF CORNER WITH TIES TO AT LEAST 4 WITNESS MONUMENTS. IF IN DISAGREEMENT WITH PREVIOUSLY ESTABLISHED CORNER, SHOW THE DISTANCE BETWEEN THE TWO CORNERS AND ALSO INDICATE THE TIES TO THE DISPUTED CORNER.



(i) I, JAMES D. REIN, PROFESSIONAL LAND SURVEYOR NO. S-1234 HEREBY CERTIFY THAT THE CORNER LOCATION ON THIS RECORD WAS DETERMINED BY ME OR UNDER MY DIRECTION AND CONTROL AND THAT THIS U.S. PUBLIC LAND SURVEY MONUMENT RECORD IS CORRECT AND COMPLETE TO THE BEST OF MY KNOWLEDGE AND BELIEF.

*[Handwritten Signature]*  
SIGNATURE

5-15-17  
DATE



INDEX NO. R - 25  
3705240000