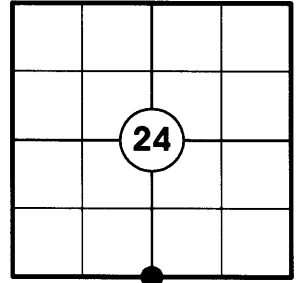


# U.S. PUBLIC LAND SURVEY MONUMENT RECORD

NOTE: THIS FORM IS INTENDED AND DESIGNED TO FULFILL ALL REQUIREMENTS OF WISCONSIN ADMINISTRATIVE CODE CHAPTER A-E 7.08 U.S. PUBLIC LAND SURVEY MONUMENT RECORD (3) (a)(b)(c)(d)(e)(f)(g)(h)(i). AN ADDITIONAL SHEET MAY BE ADDED IF NECESSARY TO CONFIRM WITH SAID REQUIREMENTS.

**(a) CORNER LOCATION:**

S1/4 CORNER OF SECTION 24  
 TOWNSHIP 37 NORTH  
 RANGE 5 EAST  
 CITY/TOWN OF LITTLE RICE  
 COUNTY OF ONEIDA



**(b) HISTORY OF ORIGINAL CORNER:**

ORIGINAL SURVEYOR: JOSEPH H. JENKINS  
 DATE OF SURVEY: COMMENCED JUNE 12, 1863  
 COMPLETED JUNE 24, 1863

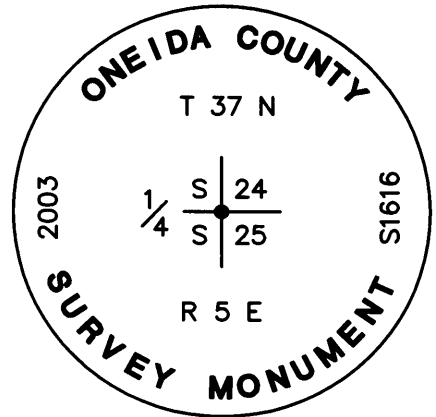
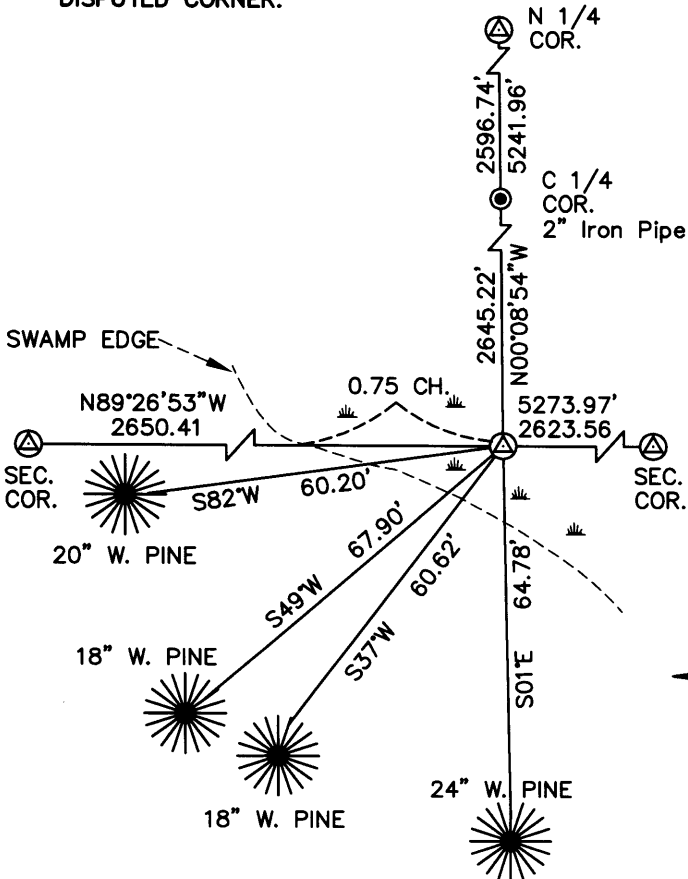
ORIGINAL BEARING TREES: 7" W. PINE - S8°E 45 LKS.  
 8" ASPEN - N84°W 31 LKS.

**(f)(g)(h) DESCRIPTION OF MONUMENT FOUND AT THIS CORNER AND IF IT WAS ACCEPTED STATE ALL EVIDENCE (MATERIAL, TESTIMONIAL, OCCUPATIONAL, PLATS, RECORDS, OTHER MONUMENTS) USED AS A BASIS FOR ESTABLISHING LOCATION. IF REESTABLISHING THROUGH LOST CORNER PROPORTIONATE METHODS, INDICATE ALL MONUMENTS, DISTANCES, AND DIRECTIONS USED TO ESTABLISH. INDICATE TYPE OF MONUMENT AND SIGN POST FOUND OR SET.**

1986: SURVEY MAP BY W.H. STUTH, OWENS-ILLINOIS, SHOWS C 1/4 CORNER, N 1/4 CORNER, SE SECTION CORNER. (SURVEY WAS PERFORMED IN THE 1960'S)

2003: NO EVIDENCE OF THE CORNER FOUND. WE REESTABLISHED THE CORNER BY USING THE NORTH-SOUTH 1/4 LINE AS SHOWN ON AN OWENS - ILLINOIS SURVEY MAP DATED SEPTEMBER 19, 1986 AND INTERSECTING THE SOUTH SECTION LINE. THE CORNER POSITION CHECKS TO THE WESTERLY SWAMP EDGE WITH THE CALL FROM THE ORIGINAL GOVERNMENT SURVEY NOTES. SET 2 1/2" X 30" LONG ONEIDA COUNTY ALUMINUM CAPPED MONUMENT IN SWAMP AND MADE NEW ACCESSORIES AS SHOWN BELOW.

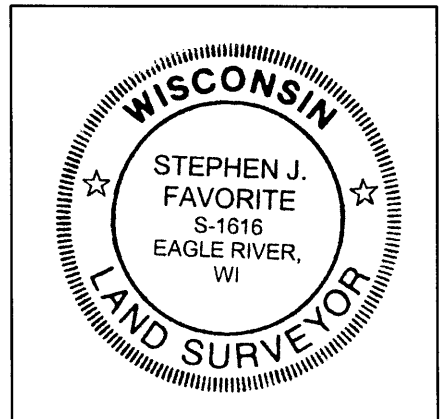
**(c)(d)(e) PLAN VIEW OF CORNER WITH TIES TO AT LEAST FOUR WITNESSES. IF IN DISAGREEMENT WITH PREVIOUSLY ESTABLISHED CORNER, SHOW THE DISTANCES BETWEEN THE TWO CORNERS AND ALSO INDICATE THE TIE TO THE DISPUTED CORNER.**



NOTES:  
 1) ALL DISTANCES ARE MEASURED TO NAIL ON SIDE OF TREE  
 2) NOT TO SCALE

I STEPHEN J. FAVORITE, REGISTERED LAND SURVEYOR NO. 1616, HEREBY CERTIFY THAT THE CORNER LOCATION ON THIS RECORD WAS REFERENCED BY ME OR UNDER MY DIRECTION AND CONTROL AND THAT THIS US PUBLIC LAND SURVEY MONUMENT RECORD IS COMPLETE TO THE BEST OF MY KNOWLEDGE AND BELIEF.

*Stephen J. Favorite*  
 SIGNATURE 12-20-04  
 DATE



INDEX NO. R-23

3705240020