

U.S. PUBLIC LAND SURVEY MONUMENT RECORD

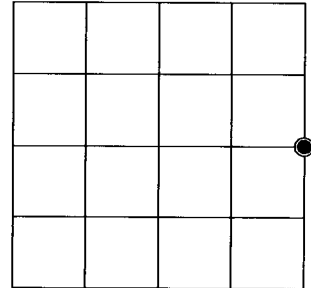
REGISTER OF DEEDS OFFICE
ONEIDA COUNTY
FILED

MAY 25 2017

AT O'CLOCK M
KYLE J. FRANSON
REGISTER OF DEEDS

(RECORDING AREA)

SECTION 25



(a) CORNER LOCATION:
East Quarter Corner of Section 25
Township 37 North
Range 5 East
Town of Little Rice
County of Oneida

WISCRS - Oneida County
North: 175402.904 USft
East: 165744.454 USft
Latitude: 45° 40' 00.60606" N
Longitude: 89° 47' 44.71607" W
Datum: NAD 83(2011)
GNSS Method: RTK - Direct
GNSS Control: WISCORS VRS
Record North: 175402.98 USft
Record East: 165744.398 USft
Record Datum: NAD 83(1991)

(b) HISTORY OF ORIGINAL CORNER ESTABLISHMENT

Original Surveyor: Alfred Millard
Date of Survey: August, 1860

Original B.T.'S: Y. Pine 10" S 32-1/2°W, 25 lks.
Y. Pine 14" N 13-1/2°E 27 lks.

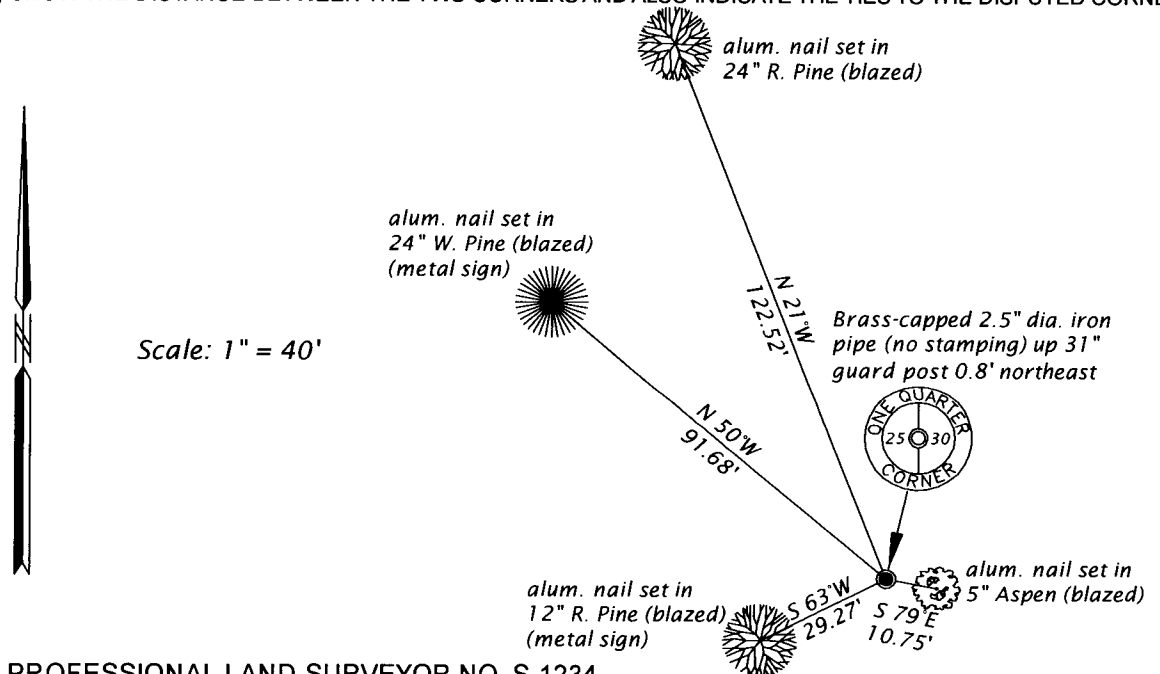
(f)(g)(h) DESCRIPTION OF MONUMENT FOUND AT THIS CORNER AND IF IT WAS ACCEPTED, STATE ALL EVIDENCE (MATERIAL, TESTIMONIAL, OCCUPATIONAL, PLATS, RECORD, OTHER MONUMENTS) USED AS A BASIS FOR ESTABLISHING LOCATION. IF NOT ACCEPTED OR IF NOTHING WAS FOUND, STATE EVIDENCE USED AS BASIS FOR ESTABLISHING LOCATION. IF REESTABLISHED THROUGH LOST CORNER PROPORTIONATE METHODS, INDICATE ALL MONUMENTS, DISTANCES AND DIRECTIONS USED TO ESTABLISH. INDICATE TYPE OF MONUMENT AND SIGN POST FOUND OR SET.

December 18, 1953 - F. R. Wincentsen, Oneida County Surveyor, (Wincentsen Book, pages 82 and 83) identifies corner monument as "Brass Capped Monument. Orig. Gov't. Bt.s (iron marks plain)".

April 14, 2017 - James D. Rein, PLS No. 1234, we recovered a brass capped 2.5" dia. iron pipe. I accept this monument as a perpetuation of the original corner and made new reference ties to Bt's as shown in the plan.

The coordinate value shown has been verified by at least one of the following methods: 1) comparison to a previously GPS determined published value; 2) the value is the average of two or more GPS observations at a markedly different time; 3) one or more distances were measured back to the GPS observed corner from temporary GPS observed offset locations.

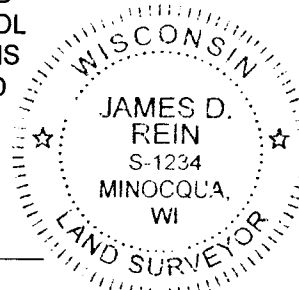
(c)(d)(e) PLAN VIEW OF CORNER WITH TIES TO AT LEAST 4 WITNESS MONUMENTS. IF IN DISAGREEMENT WITH PREVIOUSLY ESTABLISHED CORNER, SHOW THE DISTANCE BETWEEN THE TWO CORNERS AND ALSO INDICATE THE TIES TO THE DISPUTED CORNER.



(i) I, JAMES D. REIN, PROFESSIONAL LAND SURVEYOR NO. S-1234 HEREBY CERTIFY THAT THE CORNER LOCATION ON THIS RECORD WAS DETERMINED BY ME OR UNDER MY DIRECTION AND CONTROL AND THAT THIS U.S. PUBLIC LAND SURVEY MONUMENT RECORD IS CORRECT AND COMPLETE TO THE BEST OF MY KNOWLEDGE AND BELIEF.

[Handwritten Signature]
SIGNATURE

5-15-17
DATE



INDEX NO. T - 25
3705252000