

U.S. PUBLIC LAND SURVEY MONUMENT LOCATION RECORD

Recorders Data

CORNER: West 1/4 SECTION: 25 TOWNSHIP 37 NORTH RANGE 5 EAST/WEST

FOR M.C. CORNER INDICATE: NAME OF WATERWAY N/A SECTION LINE N/A

(CITY)(VILLAGE)(TOWN) OF: Little Rice COUNTY OF: Oneida

Description of monument found or placed and all other evidence used as a basis for monument location; including all monuments and related measurements required if the corner location is reestablished by lost corner proportionate methods. Also indicate name of original surveyor, survey date, corner monument set and established bearing trees, witness or reference monuments with ties from available records.

No monument observed nor detected with electronic metal locator at this corner location area in existing blacktop pavement, so I drove a 3/4" dia. by 12" long iron rod flush in roadway pavement 30.00' East of an old 1 1/2" dia. iron pipe witness monument found with uncapped top 19" above grade, which I replaced with a standard 2" dia. by 30" long aluminum pipe monument with stamped Oneida County aluminum cap nearly flush with grade. I also found an old squared wood marker post adjacent to the witness corner, which was painted blue and scribed 'SET 1/4' on South face, '1/4S 26' on West face. I left the old marker post in place and also left the 38" long old witness corner iron pipe flat on grade at new monument.

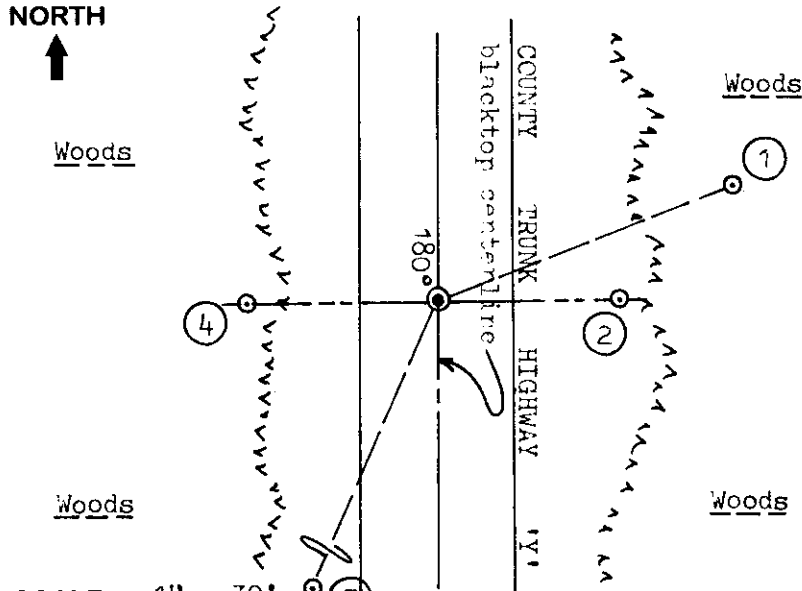
In 1863, Jenkins/GLO set a wood post as the original corner and marked BTs, an 8" Pj S89°E 20 lks and an 8" Pj N48°W 27 lks, all of which are now obliterated within existing roadway.

In 1953, Wincentsen/Genisot Engineering indicated a W.C. monument 30' West of corner in County Highway 'Y' roadway per his Plat of Survey Drawing No. 1397-1 copy provided to me by W. Bandow of Genisot & Associates, Inc., Rhinelander, Wis.

No other corner evidence was observed nor detected within a 1 chain radius of this corner location, nor revealed by reference to older records referral. The reset corner falls 8" East of pavement centerline joint.

This recovery completed June 8, 1998; there were no witnesses other than vehicle drive-bys.

Plan view map of monument location with bearing and distance ties to a minimum of four(4) described witness or reference monuments of concrete, natural stone, iron, live bearing trees or equivalent material. If applicable, also show a minimum of two(2) bearing and distance ties to any other monument found and not accepted; including the bearing and distance from the accepted monument. Indicate the basis for bearings of reference ties if not referenced to magnetic north.



WITNESS MONUMENT TIES:

- ① New BT 10" Aspen N68°E 49.79'.
- ② 1" dia. by 30" long iron pipe set with standard Reference Mark cap in top 1" above grade, East 28.05'.
- ③ New BT 11" Pj S25°W 99.67'.
- ④ Old 1 1/2" dia. iron pipe replaced with standard 2" aluminum pipe monument with stamped Oneida Co. cap nearly flush with grade West 30.00'.

Note: I set a standard white poly marker post 6" East of Witness Monument No. 2.

SCALE: 1" = 30'

Unless otherwise indicated, all bearing tree ties are to a .25" dia. by 2.5" long PK nail with a 1.25" dia. steel washer driven into unblazed right face and a .25" dia. by 2.5" long PK nail with a 2" dia. steel washer stamped 'BT' is also driven into unblazed face of bearing tree at DBH; the basis for measured bearings is magnetic to nearest degree and all tie distances are horizontal measure to nearest 1/100th feet.

LAND SURVEYOR CERTIFICATION:

I, William C. Rohde, hereby certify that I am a duly licensed Professional Land Surveyor in Wisconsin, that this USPLS monument location was determined by me or under my direction and control, and that this U.S. Public Land Survey Monument Location Record is true and correct to the best of my knowledge and belief.

William C. Rohde Date: 6/12/98
Signature

This form is intended to fulfill requirements of Chapter A-E 7.08 (3)(a)(b)(c)(d)(e)(f)(g)(h)(i) U.S. Public Land Survey Monument Location Record, Wisconsin Administrative Code. Use reverse side for geodetic location data and/or continuation purposes.

		25	

SECTION LOCATION MAP

INDEX NO. T 21

3705262000



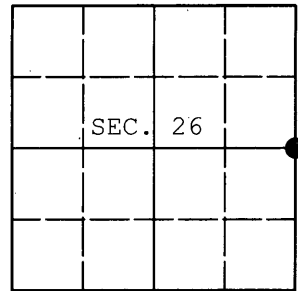
SHEET NO. 1 OF 1

INDEX NO. T 21

U.S. PUBLIC LAND SURVEY MONUMENT RECORD

Note: This form is intended and designed to fulfill all requirements of Wisconsin Administrative Code, Chapter A-E 7.08 U.S. Public Land Survey Monument Record (3) (a) (b) (c) (d) (e) (f) (g) (h) (i). An additional sheet may be added if necessary to conform with said requirements.

(a) CORNER LOCATION: WISCORS - Oneida County
 1/4 Cor. of Secs. 25 & 26 N: 175,465.79 USft
 Township 37 North E: 160,413.00 USft
 Range 5 East of the 4th P.M. Datum: NAD 1983(2011)
 Town of Little Rice County of Oneida



(b) HISTORY OF ORIGINAL CORNER ESTABLISHMENT

Original Surveyor: Original Accessories:
 Date of Survey: Commenced:
 Completed:

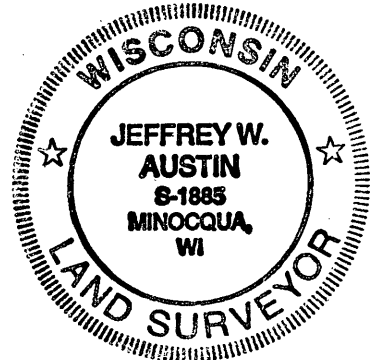
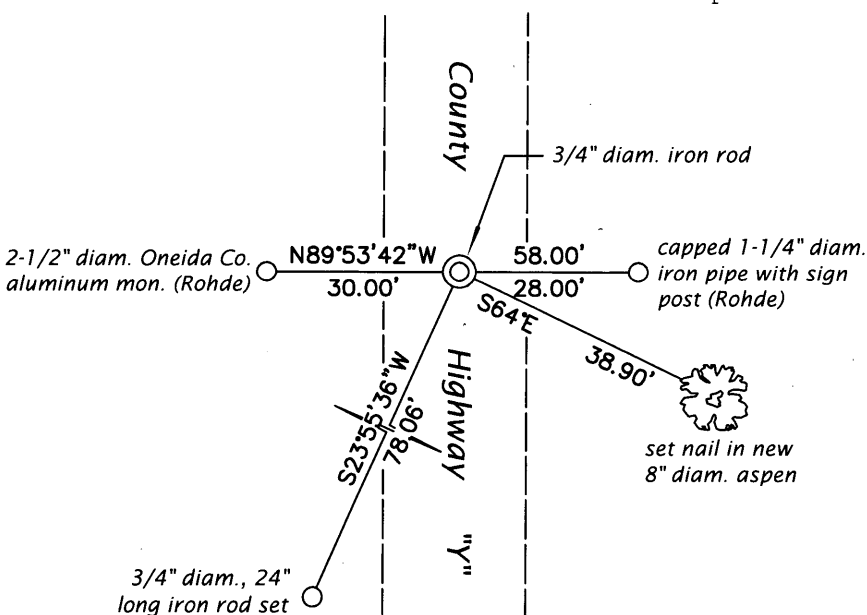
(b) (f) (g) (h) Description of monument found at this corner and if it was accepted, state all evidence (material, testimonial, occupational, plats, records, other monuments) used as a basis for accepting. If not accepted or if nothing was found, state evidence used as basis for establishing location. If re-established through lost corner proportionate methods, indicate all monuments, distances and directions used to establish. Indicate type of monument and sign post found or set.

This is a perpetuation of a previous USPLS Monument Record by William C. Rohde, RLS dated June 12, 1998 and filed in the office of the Oneida County Register of Deeds. A complete history of the corner can be found on the previous monument record. I accept the previous location as a true and faithful perpetuation or reestablishment of the original corner location and further perpetuate it as follows.

July 25, 2014: Prior to road construction, I found and accepted the record monument, a 3/4" diam. iron rod in the centerline of County Highway Y. I performed a GPS observation referenced to the WISCORS GNSS Network. I found or established accessories as shown below.

July 26, 2015: Following road construction, I returned and found the record monument undisturbed. I performed a second GPS observation referenced to the WISCORS GNSS Network. The coordinates shown are the mean of the two observations that differed by 0.04 ft.

(c) (d) (e) Plan view of corner with ties to at least 4 witness monuments. If in disagreement with previously established corner, show the distances between the two corners and also indicate the ties to the disputed.



REGISTER OF DEEDS OFFICE
 ONEIDA COUNTY
 FILED

SEP 10 2015

AT _____ O'CLOCK _____ M
 KYLE J. FRANSON
 REGISTER OF DEEDS

(i) I, Jeffrey W. Austin, Professional Land Surveyor No. S-1885, hereby certify that the corner location on this record was determined by me or under my direction and control and that this U.S. Public Land Survey Monument Record is correct and complete to the best of my knowledge and belief.

Signature _____

Date _____

SEP. 2, 2015