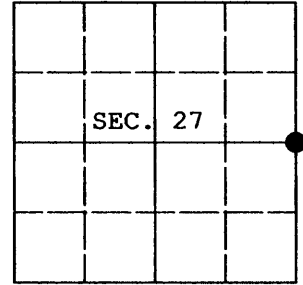


U.S. PUBLIC LAND SURVEY MONUMENT RECORD

Note: This form is intended and designed to fulfill all requirements of Wisconsin Administrative Code, Chapter A-E 7.08 U.S. Public Land Survey Monument Record (3) (a) (b) (c) (d) (e) (f) (g) (h) (i). An additional sheet may be added if necessary to conform with said requirements.

(a) CORNER LOCATION: Plane Coordinates
 1/4 Cor. of Secs. 26 & 27 X:
 Township 37 North Y:
 Range 5 East of the 4th P.M. Datum:
 Town of Little Rice County of Oneida



(b) HISTORY OF ORIGINAL CORNER ESTABLISHMENT

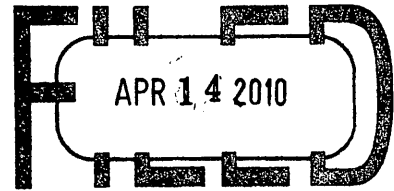
Original Surveyor: Joseph Jenkins Original Accessories:
 Date of Survey: Commenced June, 1865 Tamarack 8" N.62°E., 60 lks.
 Completed June, 1865 Tamarack 8" N.71°W., 10 lks.

(b) (f) (g) (h) Description of monument found at this corner and if it was accepted, state all evidence (material, testimonial, occupational, plats, records, other monuments) used as a basis for accepting. If not accepted or if nothing was found, state evidence used as basis for establishing location. If re-established through lost corner proportionate methods, indicate all monuments, distances and directions used to establish. Indicate type of monument and sign post found or set.

March 10, 1987: Map by W. H. Stuth indicates corner is "by others" with the following trees: J. Pine 4" S50°W, 13.6' and J. Pine 5" N55°E, 32.0'.

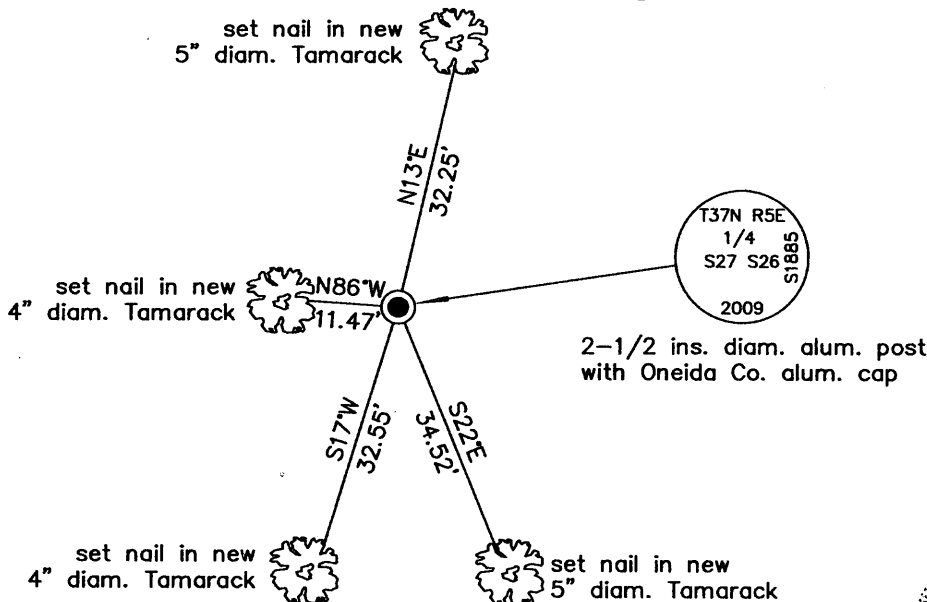
November 11, 2009: I found and accepted a 2 ins. diam. iron pipe witnessed by Stuth's J. Pine snag 4" N63°E, 31.8'. Over the pipe, I set an aluminum post, 60 ins. long, 2-1/2 ins. diam. with Oneida Co. aluminum cap projecting 18 ins. above the ground. I established accessories as shown below and set a white plastic sign post bearing Northwest, 1 ft. dist.

REGISTER OF DEEDS OFFICE
ONEIDA COUNTY, WIS.



At _____ O'Clock _____ M
THOMAS H. LEIGHTON
 REGISTER OF DEEDS

(c) (d) (e) Plan view of corner with ties to at least 4 witness monuments. If in disagreement with previously established corner, show the distances between the two corners and also indicate the ties to the disputed.



(i) I, Jeffrey W. Austin, Registered Land Surveyor No. S-1885, hereby certify upon honor that the corner location on this record was determined by me or under my direction and control and that this U.S. Public Land Survey Monument Record is correct and complete to the best of my knowledge and belief.

Signature _____ Date Mar 30, 2010



3705272000

INDEX NO. T-17