

CERTIFIED LAND CORNER RESTORATION

State of Wisconsin }
County of Oneida } ss.

I, John H. Fisher, do hereby certify that on the 19 day of May, 19 81, I found evidence of the northeast corner of Section 4 Township 36N Range R5E, Fourth Principal Meridian, as described hereon; and that from this evidence I established a new monument and accessories as described hereon to perpetuate the original location of this corner:

Description of original monument and accessories and subsequent restorations:

The original Gov't. survey was performed by Alfred Millard, Deputy Surveyor in Oct. 1860.

Set wood post
10" Tamarack N38°W, 31 links
6" Tamarack N42°E, 5 links
10" Tamarack S17°W, 24 links
5" Tamarack S52-1/2°E, 28 links

Description of corner evidence found:

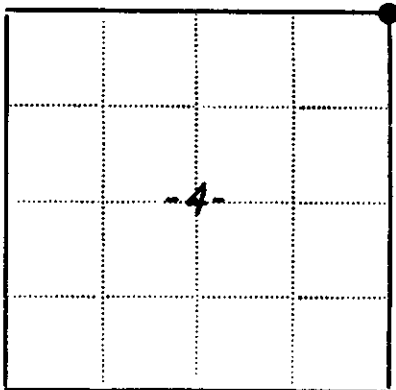
W.C.D. 2" iron pipe with brass cap (1940)
9" Tamarack S37°W, 78.9 feet

Description of monument and accessories I established to perpetuate the location of this corner:

Set.
Tamarack post
4" Tamarack S40°E, 13.4 feet



*Corner data checked in the records & accepted as correct
Book 2 No. 24, Oneida County Records*



● - Corner monument restored
□ -

Resident witnesses.....

Dated at Minocqua Wisconsin, this 6th day of August 19 81.

Signature *John H. Fisher* Title Registered Land Surveyor
(County Surveyor, Registered Land Surveyor, or other duly authorized official)

Surveyors Registration No.....

Office of *Register of Deeds* County of *Oneida*

I hereby certify that the within instrument was filed in this office for record on the 25th day of August 19 82, and was filed in Book No. Page No. of County Records.

Signature *Doris Verage Kuehn* Title *Register of Deeds*

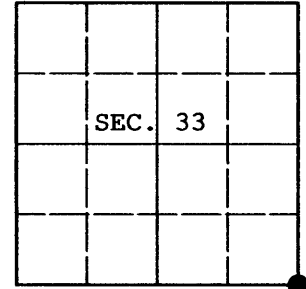
Township....., Range....., Section....., Index No....., Page No.....

A-13

U.S. PUBLIC LAND SURVEY MONUMENT RECORD

Note: This form is intended and designed to fulfill all requirements of Wisconsin Administrative Code, Chapter A-E 7.08 U.S. Public Land Survey Monument Record (3) (a) (b) (c) (d) (e) (f) (g) (h) (i). An additional sheet may be added if necessary to conform with said requirements.

(a) CORNER LOCATION: Plane Coordinates
 Cor. of Secs. 3, 4, 33 & 34 X:
 Township 36 & 37 North Y:
 Range 5 East of the 4th P.M. Datum:
 Town of Little Rice County of Oneida



(b) HISTORY OF ORIGINAL CORNER ESTABLISHMENT

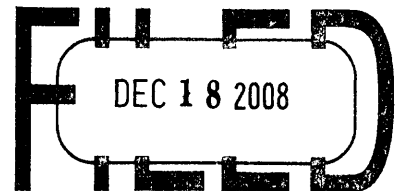
Original Surveyor: Alfred Millard	Original Accessories:
Date of Survey: Commenced August, 1860	Tamarack 10" N.38°W., 3 lks.
Completed September, 1860	Tamarack 6" N.42°E., 5 lks.
	Tamarack 10" S.17°W., 24 lks.
	Tamarack 5" S.52-1/2°E., 28 lks.

(b) (f) (g) (h) Description of monument found at this corner and if it was accepted, state all evidence (material, testimonial, occupational, plats, records, other monuments) used as a basis for accepting. If not accepted or if nothing was found, state evidence used as basis for establishing location. If re-established through lost corner proportionate methods, indicate all monuments, distances and directions used to establish. Indicate type of monument and sign post found or set.

NOTE: This is a perpetuation of a previous USPLS Monument Record by John H. Fisher, RLS dated August 6, 1981 and filed in the office of the Oneida County Register of Deeds. A complete history of the corner can be found on the previous monument record. I accept the previous location as a true and faithful perpetuation or reestablishment of the original corner location and further perpetuate it as follows.

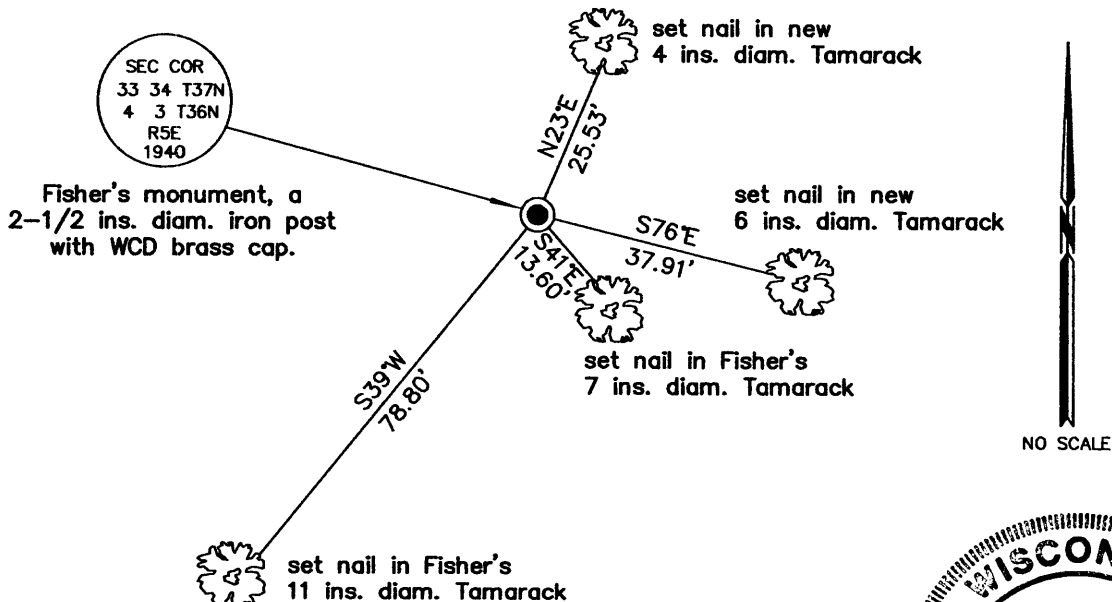
July 19, 2008: I found and accepted Fisher's monument, an iron post, 2-1/2 ins. diam. with WCD brass cap projecting 24 ins. above the bog surface. I established accessories as shown below and set a white plastic sign post bearing Northwest, 1 ft. dist.

REGISTER OF DEEDS OFFICE
ONEIDA COUNTY, WIS.



At _____ O'Clock _____ M
THOMAS H. LEIGHTON

(c) (d) (e) Plan view of corner with ties to at least 4 witness monuments. If in disagreement with previously established corner, show the distances between the two corners and also indicate the ties to the disputed.



(i) I, Jeffrey W. Austin, Registered Land Surveyor No. S-1885, hereby certify upon honor that the corner location on this record was determined by me or under my direction and control and that this U.S. Public Land Survey Monument Record is correct and complete to the best of my knowledge and belief.

Signature _____ Date DEC 12, 2008



INDEX NO. 2-13 (3705330000)