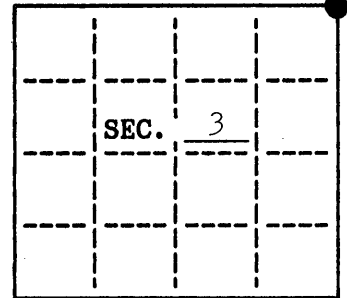


U. S. PUBLIC LAND SURVEY MONUMENT RECORD

Note: This form is intended and designed to fulfill all requirements of Wisconsin Administrative Code, Chapter A-E 7.08 U.S. Public Land Survey Monument Record (3)(a)(b)(c)(d)(e)(f)(g)(h)(i). An additional sheet may be added if necessary to conform with said requirements.

(a) CORNER LOCATION:

Oneida County
~~XXXXXX~~ ~~XXXXXX~~
State Plane Coordinates
 X 167473.626
 Y 155067.773
 Datum Base _____
 County of Oneida



NE corner of Sec. 3
 Township 36 North
 Range 5 East
 Town/~~City~~ Little Rice

(b) HISTORY OF ORIGINAL CORNER ESTABLISHMENT

Original B.T.'S

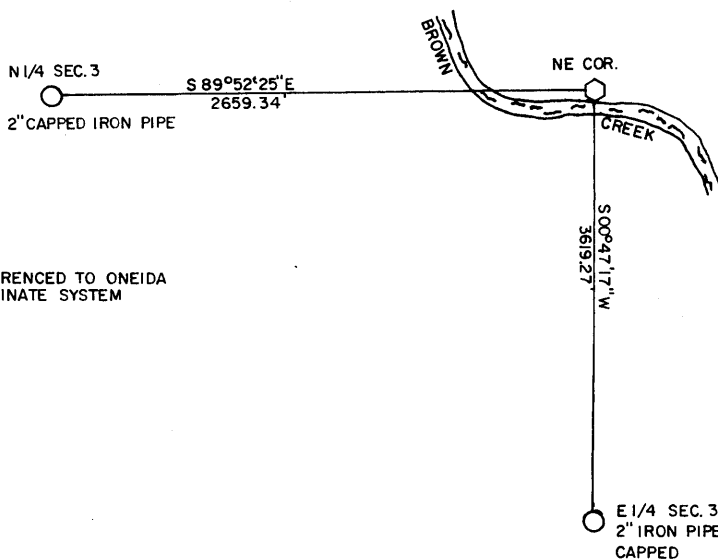
Original Surveyor: Joseph H. Jenkins
 Date of Survey: Commenced 1863
 Completed 1863

(b)(f)(g)(h) Description of monument found at this corner and if it was accepted, state all evidence (material, testimonial, occupational, plats, records, other monuments) used as a basis for accepting. If not accepted or if nothing was found, state evidence used as basis for establishing location. If reestablished through lost corner proportionate methods, indicate all monuments, distances and directions used to establish. Indicate type of monument and sign post found or set.

August 1967 & Jan. 1968 Robert Ilg at corner. 2" brass capped iron pipe and 7" X 7" sq. wood post. 153' west to c/l of creek & 11' south to north bank. Old Bt. 12" SW on point of land N 2° W 1.74 ch.

August 2003 I found 2" brass capped iron pipe by 7" X 7" wood post. Corner is ± 10' north of creek channel with no trees within reasonable distance to use as Bt's. The area appears often flooded, with tall marsh grass. Any witness monuments set near by would not hold its position, therefore were not set. Coordinates were obtained with Trimble 5700 - 5800 RTK. Using base harn 205 and checked harn 286.

(c)(d)(e) Plan view of corner with ties to at least 4 witness monuments. If in disagreement with previously established corner, show the distances between the two corners and also indicate the ties to the disputed.

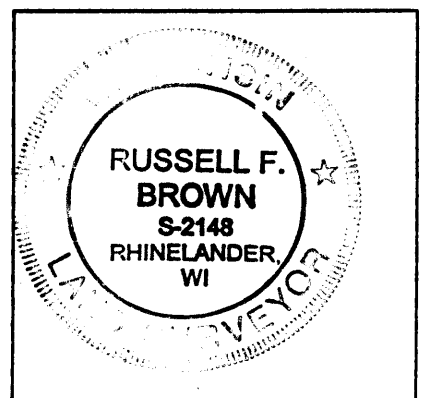


NO SCALE
 BEARINGS REFERENCED TO ONEIDA COUNTY COORDINATE SYSTEM



(i) I, Russell F. Brown
 hereby certify that the corner location on this record was determined by me or under my direction and control and that this U.S. Public Land Survey Monument Record is correct and complete to the best of my knowledge and belief.

Russell F. Brown 12/21/04
 Signature Date



INDEX NO. 217

3705340000