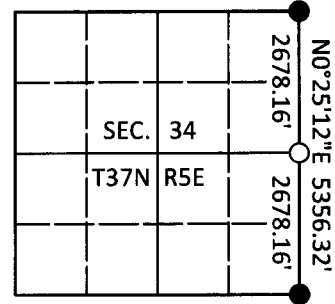


U.S. PUBLIC LAND SURVEY MONUMENT RECORD

Note: This form is intended and designed to fulfill all requirements of Wisconsin Administrative Code, Chapter A-E 7.08 U.S. Public Land Survey Monument Record (3)(a-i).

(a) CORNER LOCATION
 1/4 Cor. of Secs. 34 & 35
 Township 37 North
 Range 5 East of the 4th P.M.
 Town of Little Rice
 County of Oneida

WISCRS - Oneida County
 N: 170,151.71 USft
 E: 155,087.40 USft
 Datum: NAD 83(1991)
 GNSS Method: RTN - Direct
 GNSS Control: WISCORS VRS



(b) HISTORY OF ORIGINAL CORNER ESTABLISHMENT

Original Surveyor: Joseph Jenkins

Original Accessories:

Date of Survey Commenced: June 12, 1863
 Completed: June 24, 1863

Black Pine 14" S45°W, 4 lks.
 White Pine 8" N37°E, 5 lks.

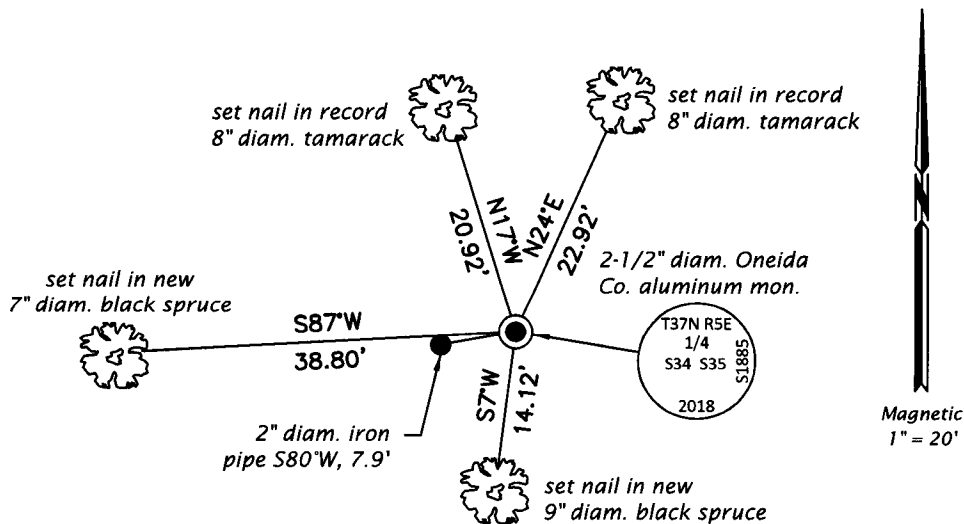
(b)(f)(g)(h) Description of monument found at this corner and if it was accepted, state all evidence (material, testimonial, occupational, plats, records, other monuments) used as a basis for accepting. If not accepted or if nothing was found, state evidence used as basis for establishing location. If re-established through lost corner proportionate methods, indicate all monuments, distances and directions used to establish. Indicate type of monument and sign post found or set.

1957: Subdivision of Sec. 35 in NEPCO book 1 on page 155 identifies corner as marked by "iron pipe or cap" witnessed by: 5" S.B. S5°E, 11.9'; 6" Tam. N32°E, 27.7' and 5" Tam. N1°W, 21.8'

June 11, 2018: I found the record monument, a 2" diam. iron pipe tipped substantially out of plumb. The pipe, intended to be set by proportion, is almost 8 feet from the midpoint of the section line. As the measured mile checks the NEPCO work within a few tenths of a foot, it's apparent this monument was staked incorrectly in 1957. As such, I repositioned the corner at the midpoint of the section line. At the corner point, I set a 2-1/2" diam., 30" long aluminum pipe with a 3-1/4" diam. Oneida Co. aluminum cap projecting 4" above the ground surface. I set a clear/black DEEP-1 magnet adjacent to the monument. I found or established accessories as shown below. I set a white vinyl sign post bearing Northeast, 0.5 ft.

The coordinate value shown has been verified by at least one of the following methods: 1) comparison to a previously GPS determined published value; 2) the value is the average of two or more GPS observations at a markedly different time; 3) one or more distances were measured back to the GPS observed corner from temporary GPS observed offset locations.

(c)(d)(e) Plan view of corner with ties to at least 4 witness monuments. If in disagreement with previously established corner, show the distances between the two corners and also indicate the ties to the disputed.



REGISTER OF DEEDS OFFICE
 ONEIDA COUNTY
 FILED

JUL 12 2018

KYLE J. FRANSON
 REGISTER OF DEEDS

(i) I, Jeffrey W. Austin, Professional Land Surveyor No. S-1885, hereby certify that the corner location on this record was determined by me or under my direction and control and that this U.S. Public Land Survey Monument Record is correct and complete to the best of my knowledge and belief.

[Handwritten Signature]
 Signature

JUNE 30, 2018
 Date