

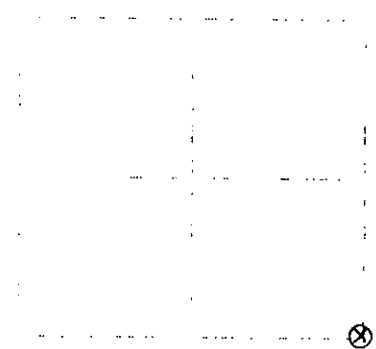
U. S. PUBLIC LAND SURVEY MONUMENT RECORD

Note: This form is intended and designed to fulfill all requirements of Wisconsin Administrative Code, Chapter SRS 7.02 U.S. Public Land Survey Monument Record 2 (including all filing charges). An additional sheet may be added if necessary to conform with said requirements.

(a) Corner location: Township 37 North
 Range 6 East

Town of Cassian

Oneida County, Wisconsin



Section 1

For original description of monument found at this corner and if it was accepted, state all evidence (material, testimonial, occupational, plats, records, other monuments) used as a basis for accepting. If not accepted or if nothing was found, state evidence used as basis for establishing location. If reestablished through lost corner proportionate methods, indicate all monuments, distances and directions used to establish. Indicate type of monument found or set and sign post.

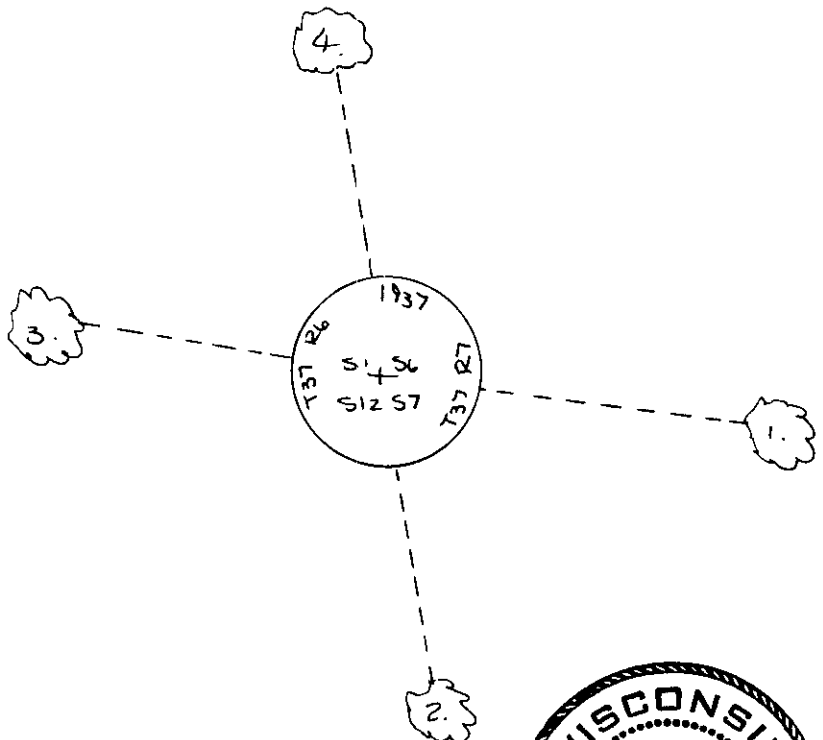
September, 1860: Alfred M. Land, US Deputy Surveyor notes the following: 81.00 set post at corner to sections 1-12-367; 8 oak 12" S70W, 2' 1/2; 8 oak 1" S42W, 20' 1/2; 8 oak 1" S17E, 30' 1/2; 8 oak 1" S50E, 44' 1/2.

December 21, 1870: same page 149 notes the following: 1" 1/2 27-7; 1" 1/2 27-7 set official iron pipe, brass cap stamped. Identified by st. of org. 37' 1/2; 15" 20' 1/2; 17" 1/2 marks are plain. Marked new 8" size oak 7" S13E, 11'; oak 5" N20W, 17'-7/4; oak 12" S82E, 14'-1/2; oak 4" S 30'W, 14'-1/2.

February 1, 1891: found and accepted 4" 3" 21' oak iron post with brass cap 22" above ground marked as shown below. I found the following witnesses: scrubbed pine stump 11' 1/2; N12E, 11.7 feet; 21' oak iron pipe NW, 0.27 feet. I established the following witnesses: set nail in oak 12" S83E, 12.99 feet; set nail in oak 14" S10E, 11.40 feet; set nail in oak 10" N81W, 13.98 feet; set nail in oak 12" N10W, 20.58 feet; set plastic sign post 55. 1/2 foot.

2. 1/2 of Plan view of corner with trees to at least four witness monuments. If in disagreement with previously established corner, show the distances between the two corners and also indicate the lines to the disputed corner.

1. nail in oak 12"
S83E, 12.99 feet.
 2. nail in oak 14"
S10E, 11.40 feet.
 3. nail in oak 10"
N81W, 13.98 feet.
 4. nail in oak 12"
N10W, 20.58 feet.
- (not to scale)



I, Jeffrey W. Austin, Registered Land Surveyor S-1885 certify that the corner location on this record was determined by me or under my direction and control and that this U.S. Public Land Survey Monument Record is correct and complete to the best of my knowledge and belief.

Jeffrey W. Austin

2-7-1991



Index no. E-25

3706010000