

Stock No. 26273

U.S. PUBLIC LAND SURVEY MONUMENT RECORD

Index No. 25 C

State of Wisconsin

County of Oneida } ss.

I, John H. Fisher, do hereby certify that on the 15th day of July, 1985, I found evidence of the East one quarter corner of Section 1 Township 37 North, Range 6 East, Fourth Principal Meridian, as described hereon; and that from this evidence I established a new monument and accessories as described hereon to perpetuate the original location of this corner.

Resident witnesses:

None

History of original corner establishment: The original Government survey was performed by Alfred Willard, Deputy Surveyor in 1860. Wood post set:

Sugar 12" S46°E 52 lks.
Maple 9" N16°W 15 lks.

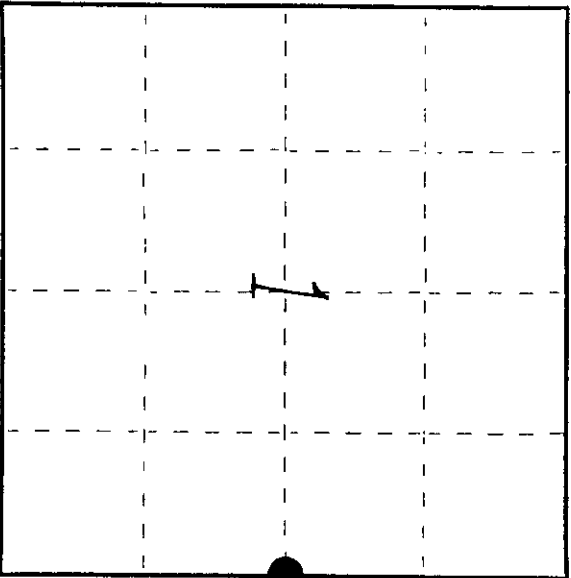
Description of corner evidence found:
2" brass tablet on 2" galvanized iron pipe
Scribed post broken off
1-1/4" iron pipe South .36 feet

Oak 18" S31°W 14.50 feet
Oak 12" S35°E 24.90 feet

Description of monument and accessories I established to perpetuate the original location of this corner. Blazed and scribed the following new bearing trees

Set nails in:

Oak 8" N29°W 18.30 feet
Sugar Maple 4" N74°E 13.15 feet



● = Corner monument restored.

Dated at Minocqua Wis. this 24th day of July, 1985.

Signature: John H. Fisher Title Registered Land Surveyor Registration No. S-836 (County Surveyor, Registered Land Surveyor, or other duly authorized official)

Office of Register of Deeds, County of Oneida I hereby certify that the within instrument was filed in this office for record on the 11 day of June 1986 at 4:00 o'clock P.M.

Doris V. Hays (Register of Deeds)

By Suzanne A. Biss Deputy

3706012000

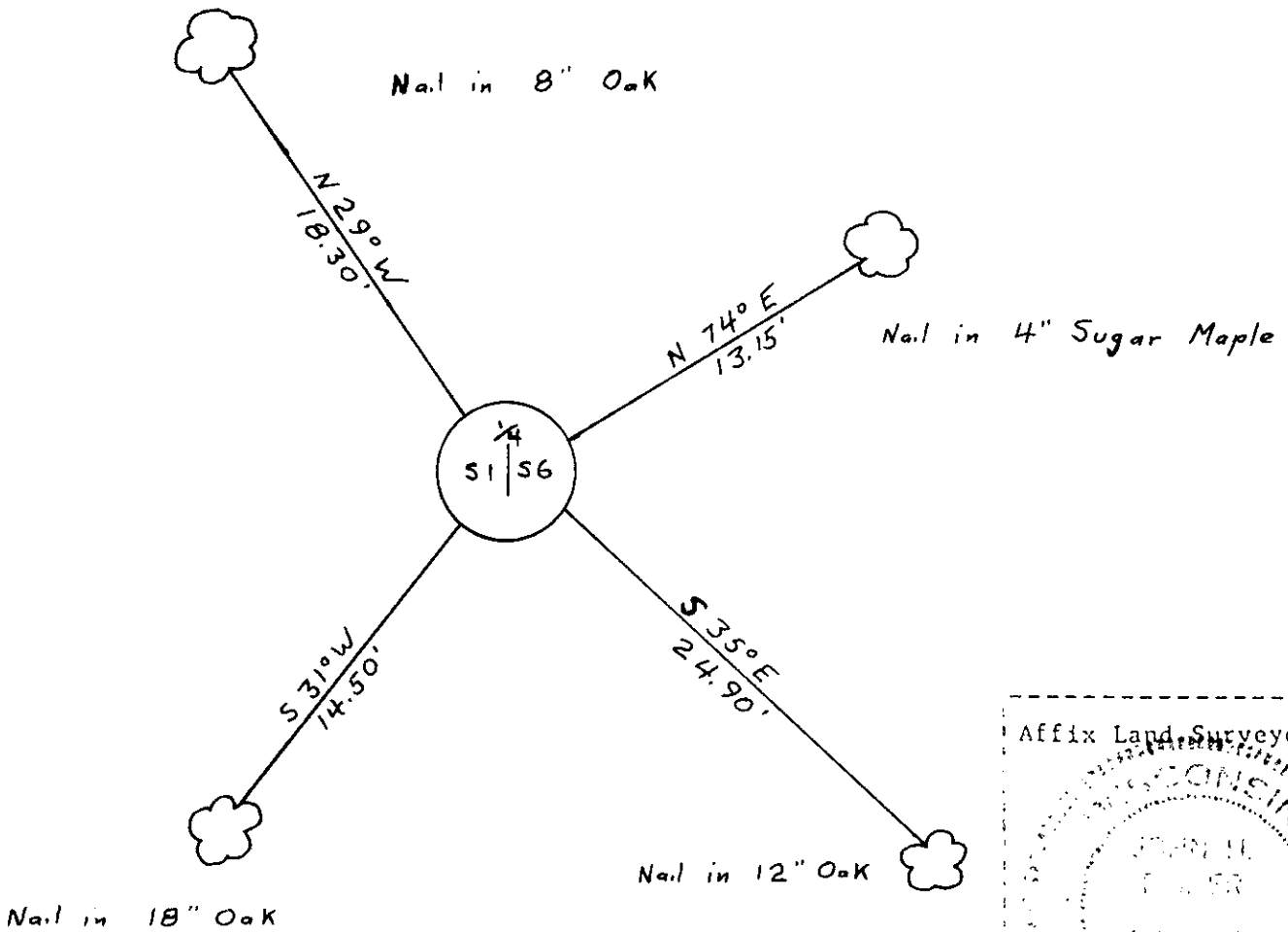
- (e) Describe any material discrepancy between the location of the corner as restored or reestablished and the location of that corner as previously restored or reestablished by distance and direction. Show the discrepancy on the plan view drawing under (d), above. Show the distances between the corner as previously restored or reestablished and (1) the corner as restored or reestablished, and (2) to at least 2 of the witness monuments shown on the drawing in (d), above.

See drawing below

- (f) Was the corner restored through acceptance of (1) an obliterated evidence location, or, (2) a found perpetuated location?

Found perpetuated location

- (g&h) Was the corner reestablished through lost corner proportionate methods? If so, show the method, including the directions and distances to other public land survey corners used as evidence or used for proportioning in determining the corner location?



(i) John H. Fisher

(type or print name) certify that the corner location shown on this record was determined by me or under my direction and control and that this U.S. Public Land Survey Monument Record is correct and complete to the best of my knowledge and belief.

Signature

Date

John H. Fisher

7/24/85