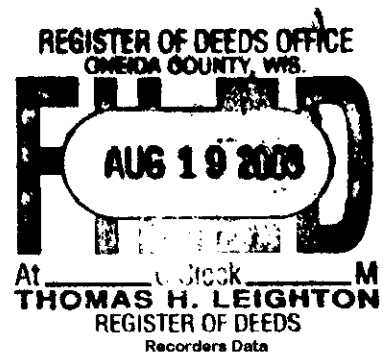


This form is intended to fulfill the requirements of Chapter A-E7.08 (3)(a) thru (i) U.S. Public Land Survey Monument Location Record, Wisconsin Administrative Code. Use the reverse side of form for continuation.



U.S. PUBLIC LAND SURVEY MONUMENT LOCATION RECORD

USPLS CORNER: SOUTH WITNESS MC SECTION: 6 TOWNSHIP: 37 NORTH RANGE: 7 EAST
 NAME OF WATERWAY FOR M.C. CORNER : BEARSKIN LAKE SECTION LINE: WEST
~~(CITY)(VILLAGE)(TOWN)~~ OF: CASSIAN COUNTY OF: ONEIDA

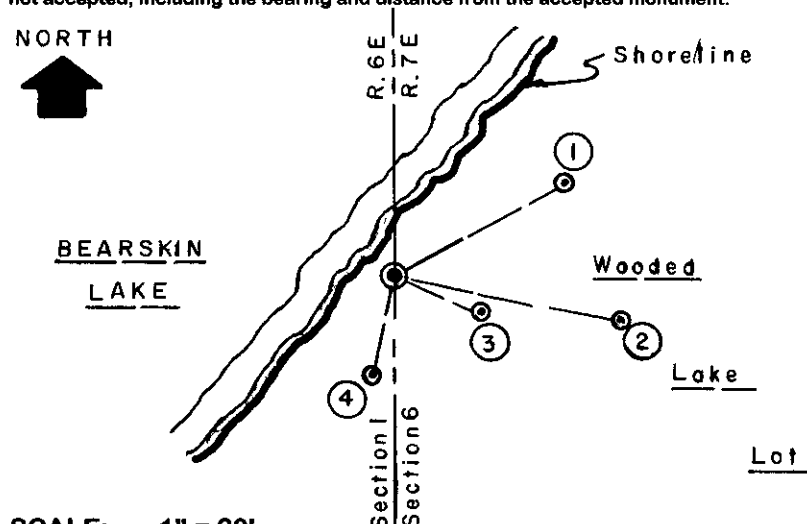
Description of monument found or placed and all other evidence used as the basis for monument location; including monuments and measurements required if the corner location was reestablished by lost corner proportionate methods. Also indicate name of the original surveyor, original survey date and the corner monument, bearing trees, witness or other reference monuments established, including measured bearing and distance ties, from available survey records.

Found and accepted an old record narrow gauge railroad iron tipped slightly West and 12" up at this corner; I left the rail in place, as extensive digging would be required in the rocky subgrade, and set a standard 2" dia. by 30" long aluminum pipe monument with stamped Oneida County cap along the East side of the railroad iron at an estimated plumb position and at averaged old BT ties. The corner falls 3' East of lakeshore bearing S50°W on frontage at Fire No. 5477 East Bearskin Road. I set a standard white poly "T" marker post 20" West of the corner monument on lakeshore bank.

In September 1860, Alfred Millard set a wood post as the original corner and noted OBTs: a 12" Bw S26°W 29 links and a 14" Bw S80°E 28 links; all are now obliterated. In 1966/1968, Lloyd W. Scott/RLS 584 notes this Wit MC as a circle symbol on his Plat of Survey filed as B-1317 in Oneida County survey records. In 1975, John Margitan/RLS 1017 notes this Wit MC as a railroad rail per Plats of Survey filed as A-223 and L-151 in Oneida County survey records. In March 1980, Robert Winat/RLS 1040 notes this Wit MC as a railroad rail per his Plats of Survey filed as L-105 and L-372 in Oneida County survey records. In July 1983, James Rein/RLS 1234 notes this Wit MC as a railroad rail and existing BTs: a 11" Cedar N59°E 20.06', found OK and used for new ties; an 8" Bw S13°E 10.70', now a low sawed off dead stump; and a 6" Bw S31°W 21.05', found OK with upper & lower blazes open; per his Plat of Survey filed as B-1461 in Oneida County survey records. In 1990, James Rein/RLS 1234 notes this same Wit MC with a notation to see USPLS location record, not filed as of this date, on his Plat of Survey filed as C-780 and C-1153 in Oneida County survey records.

This recovery completed June 13, 2003 and witnessed by adjoining landowner.

Plan view map of monument location with bearing and distance ties to a minimum of four(4) described witness or reference monuments of concrete, natural stone, iron, live bearing trees or equivalent material. If applicable, also show a minimum of two(2) bearing and distance ties to any other monument found and not accepted; including the bearing and distance from the accepted monument.



SCALE: 1" = 20'

Unless otherwise indicated, all bearing tree ties are to a .25" dia. by 2.5" long PK nail with a 1.25" dia. steel washer driven into unblazed right face and a .25" dia. by 2.5" long PK nail with a 2" dia. steel washer stamped BT is also driven into unblazed face of bearing tree at DBH; the basis for measured bearings is by compass to nearest degree and all tie distances are measured horizontal by steel tape corrected to nearest 1/100th feet at standard temperature of 68° F.

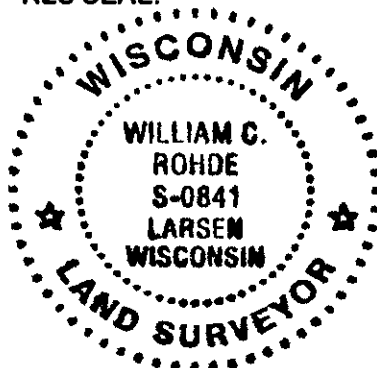
WITNESS MONUMENT TIES:

- ① Old 14" Cedar BT with upper & lower blaze scars plain, N60°E 20.06'.
- ② New 5" Fir BT S79°E 23.78'.
- ③ New 5" Mr BT S67°E 9.56'.
- ④ New 8" Mr BT S14°W 10.46' to PK nail/washer set 4' up in right face.

Also found an uncapped 3/4" rebar 15" up N66°E 32.70' and an old uncapped 3/4" iron pipe 5" up N67°E 33.98'.

I flagged corner monument, "T" marker post and all BTs with blaze orange tape.

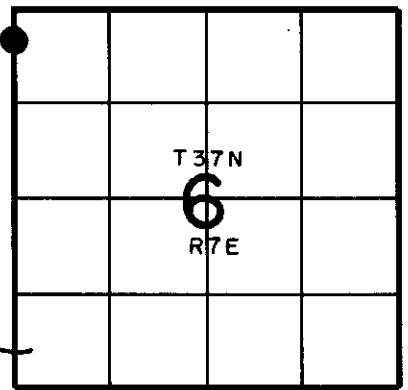
RLS SEAL:



LAND SURVEYOR CERTIFICATE:

I, William C. Rohde, hereby certify that I am duly licensed as a Professional Land Surveyor in the State of Wisconsin; that this USPLS monument location was determined by me and/or under my direct supervision and control; and that this U.S. Public Land Survey Monument Location Record is true and correct to the best of my knowledge and belief.

Signed: *William C. Rohde*
 William C. Rohde RLS 841



SECTION LOCATION MAP
 INDEX NO. A/B 25

Date Signed: August 1, 2003

3706013500