

U.S. PUBLIC LAND SURVEY MONUMENT RECORD

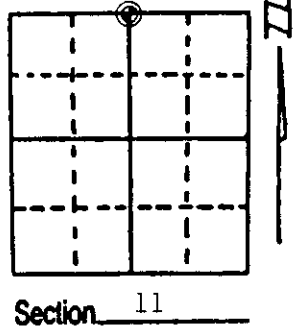
Note: This form is intended and designed to fulfill all requirements of Wisconsin Administrative Code, Chapter A-E 7.08 U.S. Public Land Survey Monument Record (3) (a) (b) (c) (d) (e) (f) (g) (h) (i). An additional sheet may be added if necessary to conform with said requirements.

(a) Corner location: Township 37 North

Range 6 East/West

Town/City/Village CASSAIN

County ONEIDA



(b) (f) (g) (h) Description of monument found at this corner and if it was accepted, state all evidence (material, testimonial, occupational, plats, records, other monuments) used as a basis for accepting. If not accepted or if nothing was found, state evidence used as basis for establishing location. If reestablished through lost corner proportionate methods, indicate all monuments, distances and directions used to establish. Indicate type of monument found or set and sign post.

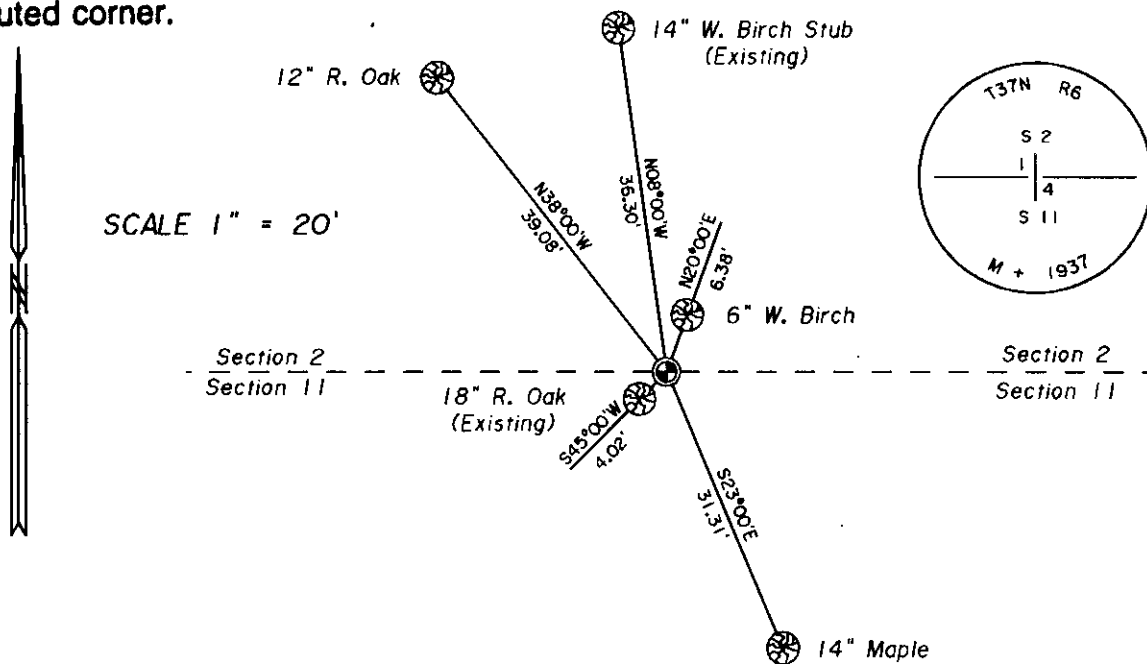
June 28th, 1863 - Joseph H. Jenkins, Deputy Surveyor, set quarter section post witnessed by a 10" Aspen, N42°W, 4 links; and by a 10" W. Pine, S35°W, 15 links.

October 28th, 1937 - V. M. Maine, County Surveyor, recovered no evidence of original corner. Set 1/4 stk. at single proportionate measurement. Made new reference bearing tree ties: 4" B. Oak, N38°W, .584 chains; and a 7" B. Oak, S31°W, .52 chains.

1968 - Owens Illinois (Forestry Survey Record) identifies recovered corner "By Others" referenced by a 10" W.B., N5°W, 36.0', and a 6" Oak, S46°W, 4.0'.

Nov. 14th, 1995 - James D. Rein, R.L.S. No. 1234, recovered a brass capped 2" dia. iron pipe referenced by the following bearing trees: 14" W. Birch stub, N08°00'W, 36.30 feet; and a 18" R. Oak, S45°00'W, 4.02 feet. Set plastic marker post alongside of the corner monument and made new reference bearing tree ties as shown in plan view.

(c) (d) (e) Plan view of corner with ties to at least 4 witness monuments. If in disagreement with previously established corner, show the distances between the two corners and also indicate the ties to the disputed corner.

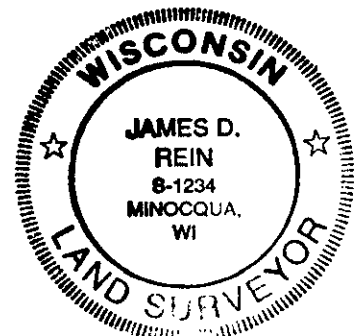


JAMES D. REIN, REGISTERED LAND SURVEYOR NO. 1234

(i) I, James D. Rein
(type or print name) certify that the corner location on this record was determined by me or under my direction and control and that this U.S. Public Land Survey Monument Record is correct and complete to the best of my knowledge and belief.

Signature James D. Rein

Date 11/30/95



Index No. E-19

3706020020

U.S. PUBLIC LAND SURVEY MONUMENT RECORD

REGISTER OF DEEDS OFFICE
ONEIDA COUNTY
FILED

Note: This form is intended and designed to fulfill all requirements of the Wisconsin Administrative Code, Chapter A-E 7.08 U.S. Public Land Monument Record (3)(a)(b)(c)(d)(e)(f)(g)(h)(i). An additional sheet may be added if necessary to conform with said requirements.

OCT 23 2017

(a) CORNER LOCATION:

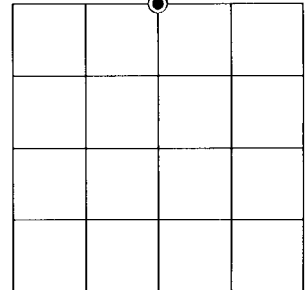
North Quarter Corner of Section 11
Township 37 North
Range 6 East
Town Cassian
County of Oneida

North:
East:
Datum:
GNSS Method:
GNSS Control:

AT 0 O'CLOCK M
BY KYLE J. FRANSON
REGISTER OF DEEDS

(RECORDING AREA)

SECTION 11



(b) HISTORY OF ORIGINAL CORNER ESTABLISHMENT

Original Surveyor:
Date of Survey: Commenced
Completed
Original B.T.'S

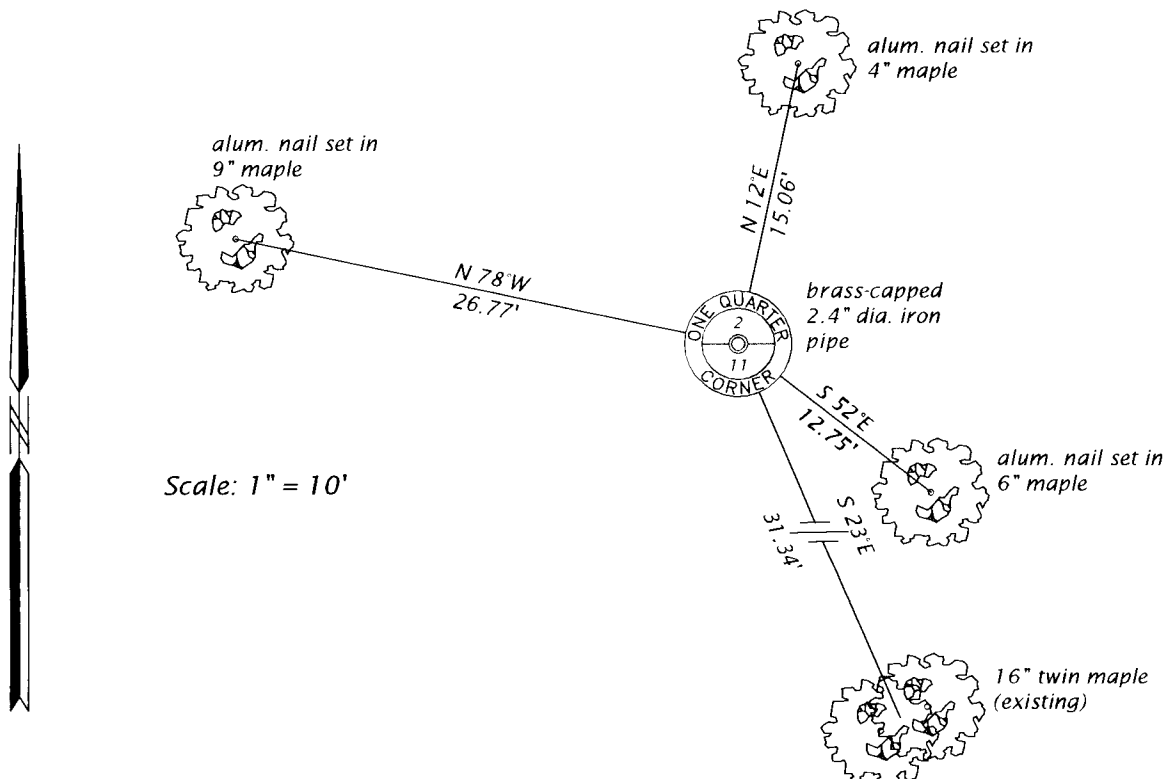
SEE PREVIOUS U.S.P.L.S. MONUMENT
RECORD DATED NOVEMBER 30, 1995.

(f)(g)(h) DESCRIPTION OF MONUMENT FOUND AT THIS CORNER AND IF IT WAS ACCEPTED, STATE ALL EVIDENCE (MATERIAL, TESTIMONIAL, OCCUPATIONAL, PLATS, RECORD, OTHER MONUMENTS) USED AS A BASIS FOR ESTABLISHING LOCATION. IF NOT ACCEPTED OR IF NOTHING WAS FOUND, STATE EVIDENCE USED AS BASIS FOR ESTABLISHING LOCATION. IF REESTABLISHED THROUGH LOST CORNER PROPORTIONATE METHODS, INDICATE ALL MONUMENTS, DISTANCES AND DIRECTIONS USED TO ESTABLISH. INDICATE TYPE OF MONUMENT AND SIGN POST FOUND OR SET.

This is a perpetuation of a previous U.S.P.L.S. Monument Record by James D. Rein, RLS, dated November 30, 1995, and filed in the office of the Oneida County Register of Deeds. A complete history of the corner can be found on the previous monument record. I accept the previous location as a true and faithful perpetuation or reestablishment of the original corner location and further perpetuate it as follows.

October 6, 2017, James D. Rein, PLS No. S-1234, found and accepted the brass-capped iron pipe shown on the previous monument record. Many of the previous bearing trees are now gone - see below for updated witnesses.

(c)(d)(e) PLAN VIEW OF CORNER WITH TIES TO AT LEAST 4 WITNESS MONUMENTS. IF IN DISAGREEMENT WITH PREVIOUSLY ESTABLISHED CORNER, SHOW THE DISTANCE BETWEEN THE TWO CORNERS AND ALSO INDICATE THE TIES TO THE DISPUTED CORNER.



(i) I, JAMES D. REIN, PROFESSIONAL LAND SURVEYOR NO. S-1234 HEREBY CERTIFY THAT THE CORNER LOCATION ON THIS RECORD WAS DETERMINED BY ME OR UNDER MY DIRECTION AND CONTROL AND THAT THIS U.S. PUBLIC LAND SURVEY MONUMENT RECORD IS CORRECT AND COMPLETE TO THE BEST OF MY KNOWLEDGE AND BELIEF.

[Handwritten Signature]

10-17-17

SIGNATURE

DATE



INDEX NO. E-19
3706020020