

U.S. PUBLIC LAND SURVEY MONUMENT RECORD

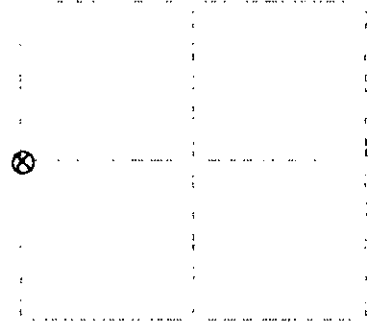
Note: This form is intended and designed to fulfill all requirements of Wisconsin Administrative Code, Chapter A-E 7.08 U.S. Public Land Survey Monument Record's requirements (if applicable). An additional sheet may be added if necessary to conform with said requirements.

(a) Corner location: Township 37 North

Range 6 East

Town of Cassian

Oneida County, Wisconsin



Section 1

(b)(1) (i) Description of monument found at this corner and if it was accepted, state all evidence (material, testimonial, occupational, plats, records, other monuments) used as a basis for accepting. If not accepted or if nothing was found, state evidence used as basis for establishing location. If reestablished through lost corner proportionate methods, indicate all monuments, distances and directions used to establish. Indicate type of monument found or set and sign post.

June-July, 1860: Joseph Perkins, US deputy surveyor notes the following: 41.40 set 1/4 sec. post: spruce 6 N7E, 116; spruce 6 N2W, 189.

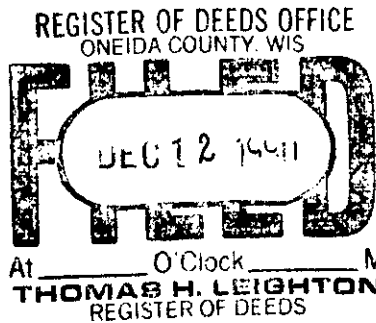
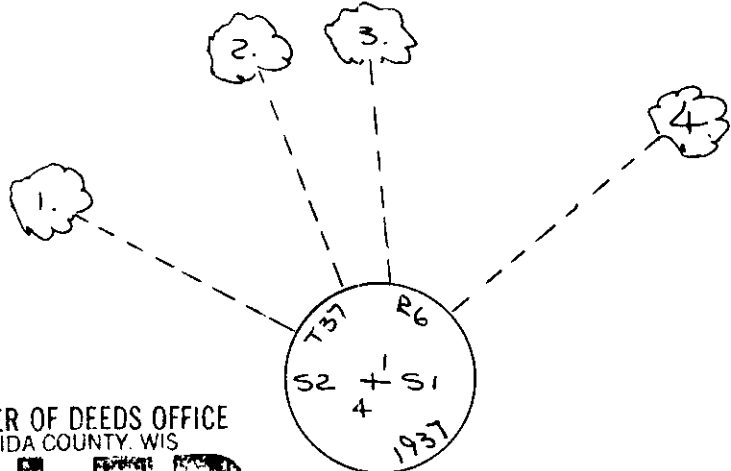
January 13, 1937: Maine page 148 notes the following: 40.64 set 1/4 stake official iron pipe, brass cap stamped. Marked B15 set w.p. 3 N2W, 136-1.0; spruce 3 N50E, 194.

November 30, 1990: I found and accepted a 2-1/2" dia. iron post with brass cap 24" above ground marked as shown below. I found the following witnesses: tying w. pine 6" N3W, 26.5 feet. I established the following witnesses: set nail in n.pine 6" N2W, 36.00 feet; set nail in w.pine 8" N21W, 26.13 feet; set nail in w.pine 7" N5W, 45.40 feet; set nail in b.spruce 4" N50E, 20.75 feet; set plastic sign post north 1 foot.

(c) (i) Plan view of corner with ties to at least four witness monuments, if in disagreement with previously established center, show the distances between the two corners and also indicate the ties to the disputed corner.

1. nail in n.pine 6" N62W, 36.00 feet.
2. nail in w.pine 8" N21W, 26.13 feet.
3. nail in w.pine 7" N5W, 45.40 feet.
4. nail in b.spruce 4" N50E, 20.75 feet.

(not to scale)



I, Jeffrey W. Austin, Registered Land Surveyor S-1885 certify that the corner location on this record was determined by me or under my direction and control and that this U.S. Public Land Survey Monument Record is correct and complete to the best of my knowledge and belief.

NOVEMBER 30, 1990

Index no. C-21

3706022000