

U.S. PUBLIC LAND SURVEY MONUMENT RECORD

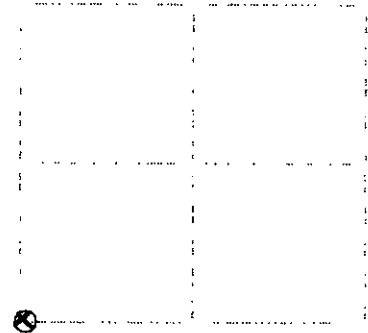
Note: This form is intended and designed to fulfill all requirements of Wisconsin Administrative Code, Chapter A-E 7.08 U.S. Public Land Survey Monument Record. Do not obliterate anything. An additional sheet may be added if necessary to conform with said requirements.

(a) Corner location: Township 37 North

Range 6 East

Town of Cassian

Oneida County, Wisconsin



Section 2

(b)(1)(g)(h): Description of monument found at this corner and if it was accepted, state all evidence (material, testimonial, occupational, plats, records, other monuments) used as a basis for accepting. If not accepted or if nothing was found, state evidence used as basis for establishing location. If reestablished through lost corner proportionate methods, indicate all monuments, distances and directions used to establish. Indicate type of monument found or set and sign post.

June-July, 1847: Joseph Jenkins, US deputy surveyor notes the following: 80.09 sec post cor. to secs: 1,3,10,11: blk pine 6 NE75, 852; blk pine 8 S3E, 853.

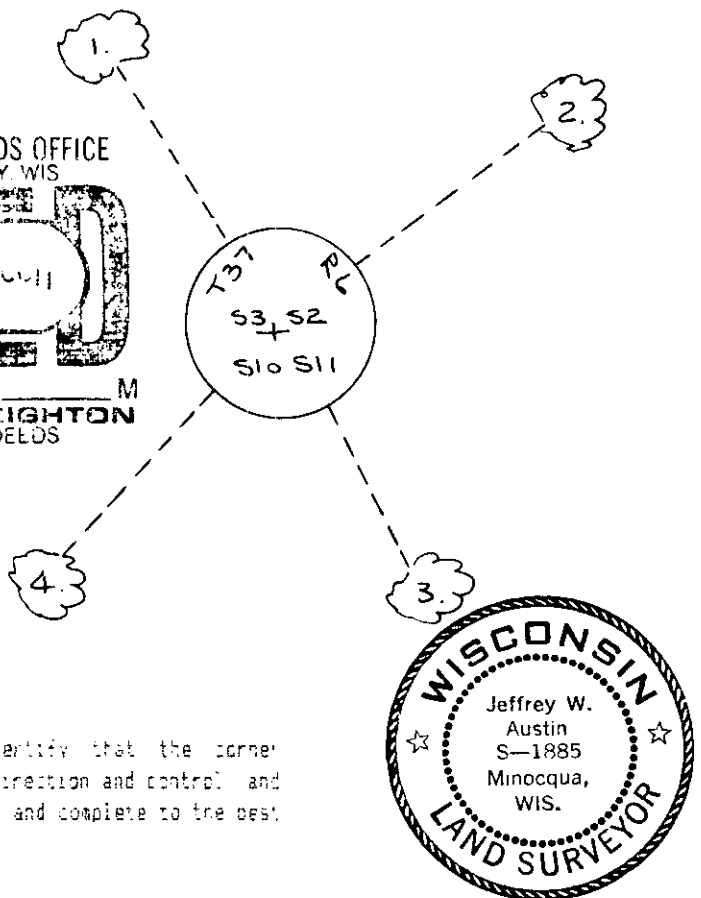
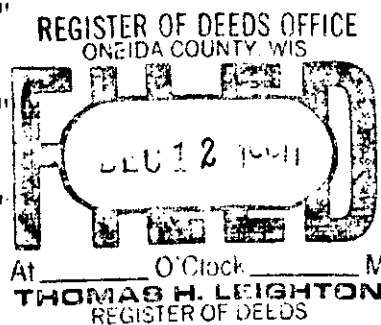
October 27, 1937: Macra page 150 notes the following: 80.52-1/2 feet 2.89-1/2 south of orig. govt. cor. 1,3,10,11 identified by old sec. post & orig. 27 sec. sign 6 NE75, 8.54 down but being plain. Set official corner, no BIs anywhere near, sets in open marsh.

November 20, 1990: I found and accepted a 2-1/2 dia. iron post with brass cap 15" above ground marked as shown below. I established the following witnesses: set nail in b.spruce 5" N32W, 45.40 feet; set nail in b.spruce 5" N53E, 57.40 feet; set nail in b.spruce 4" S27E, 33.23 feet; set nail in b.spruce 4" S42W, 14.29 feet; set plastic sign post north 1 foot.

(c) to be: Plan view of corner with ties to at least four witness monuments. If in disagreement with previously established corner, show the distances between the two corners and also indicate the ties to the disputed corner.

1. nail in b.spruce 5" N32W, 45.40 feet.
2. nail in b.spruce 5" N53E, 57.40 feet.
3. nail in b.spruce 4" S27E, 33.23 feet.
4. nail in b.spruce 4" S42W, 14.29 feet.

(not to scale)



I, Jeffrey W. Austin, Registered Land Surveyor 3-1885 certify that the corner location on this record was determined by me or under my direction and control and that this U.S. Public Land Survey Monument Record is correct and complete to the best of my knowledge and belief.



Index no. E-17

Jeffrey W. Austin
 November 30, 1990
 Date

3706030000

U.S. PUBLIC LAND SURVEY MONUMENT RECORD

Note: This form is intended and designed to fulfill all requirements of the Wisconsin Administrative Code, Chapter A-E 7.08 U.S. Public Land Monument Record (3)(a)(b)(c)(d)(e)(f)(g)(h)(i). An additional sheet may be added if necessary to conform with said requirements.

REGISTER OF DEEDS OFFICE
ONEIDA COUNTY
FILED

OCT 23 2017

(a) CORNER LOCATION:

Northwest Corner of Section 11
Township 37 North
Range 6 East
Town of Cassian
County of Oneida

North:
East:
Datum:
GNSS Method:
GNSS Control:

KYLE J. FRANSON
REGISTER OF DEEDS

(RECORDING AREA)

SECTION 11

(b) HISTORY OF ORIGINAL CORNER ESTABLISHMENT

Original Surveyor:
Date of Survey: Commenced
Completed
Original B.T.'S

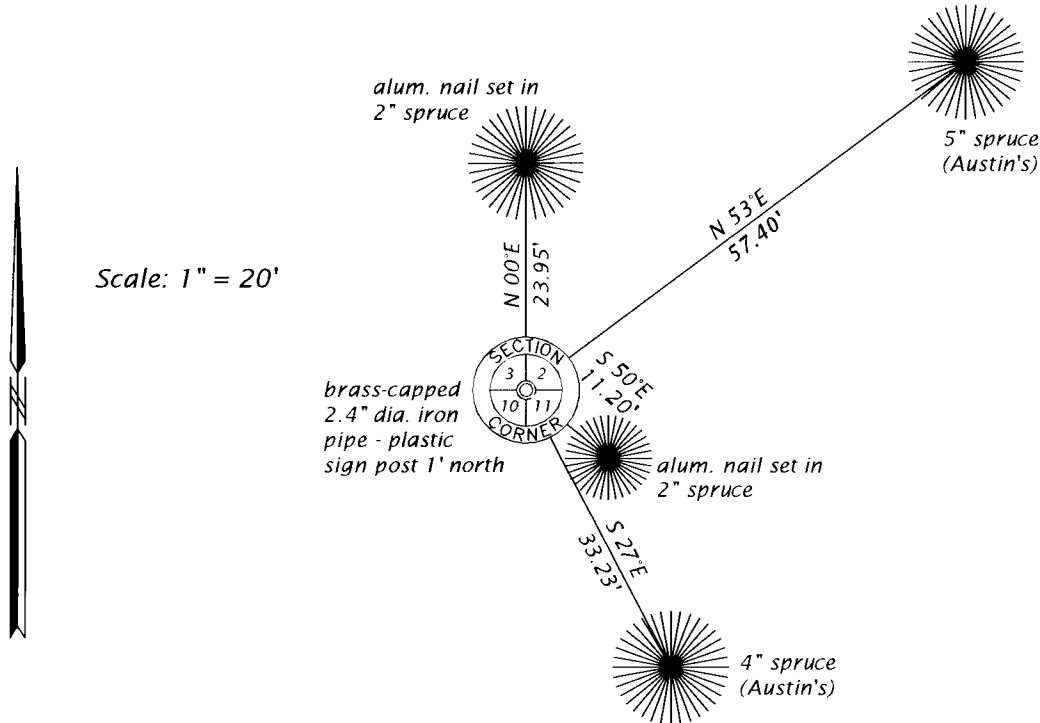
SEE PREVIOUS U.S.P.L.S. MONUMENT RECORD DATED NOVEMBER 30, 1990.

(f)(g)(h) DESCRIPTION OF MONUMENT FOUND AT THIS CORNER AND IF IT WAS ACCEPTED, STATE ALL EVIDENCE (MATERIAL, TESTIMONIAL, OCCUPATIONAL, PLATS, RECORD, OTHER MONUMENTS) USED AS A BASIS FOR ESTABLISHING LOCATION. IF NOT ACCEPTED OR IF NOTHING WAS FOUND, STATE EVIDENCE USED AS BASIS FOR ESTABLISHING LOCATION. IF REESTABLISHED THROUGH LOST CORNER PROPORTIONATE METHODS, INDICATE ALL MONUMENTS, DISTANCES AND DIRECTIONS USED TO ESTABLISH. INDICATE TYPE OF MONUMENT AND SIGN POST FOUND OR SET.

This is a perpetuation of a previous U.S.P.L.S. Monument Record by Jeffrey W. Austin, RLS, dated November 30, 1990, and filed in the office of the Oneida County Register of Deeds. A complete history of the corner can be found on the previous monument record. I accept the previous location as a true and faithful perpetuation or reestablishment of the original corner location and further perpetuate it as follows.

October 6, 2017, James D. Rein, PLS No. S-1234, found and accepted the brass-capped iron pipe shown on the previous monument record. Austin's northwest and southwest witnesses are now gone - see below for updated witnesses.

(c)(d)(e) PLAN VIEW OF CORNER WITH TIES TO AT LEAST 4 WITNESS MONUMENTS. IF IN DISAGREEMENT WITH PREVIOUSLY ESTABLISHED CORNER, SHOW THE DISTANCE BETWEEN THE TWO CORNERS AND ALSO INDICATE THE TIES TO THE DISPUTED CORNER.



(i) I, JAMES D. REIN, PROFESSIONAL LAND SURVEYOR NO. S-1234 HEREBY CERTIFY THAT THE CORNER LOCATION ON THIS RECORD WAS DETERMINED BY ME OR UNDER MY DIRECTION AND CONTROL AND THAT THIS U.S. PUBLIC LAND SURVEY MONUMENT RECORD IS CORRECT AND COMPLETE TO THE BEST OF MY KNOWLEDGE AND BELIEF.

[Signature]
SIGNATURE

10-17-17
DATE



INDEX NO. E-17
3706030000