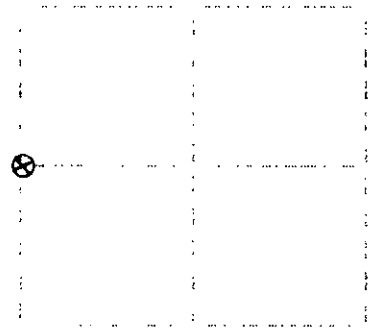


U. S. PUBLIC LAND SURVEY MONUMENT RECORD

Note: This form is intended and designed to fulfill all requirements of Wisconsin Administrative Code, Chapter A-E 7.08 U.S. Public Land Survey Monument Record (31a) (b) and (c) (1) (2). An additional sheet may be added if necessary to conform with said requirements.

(a) Corner location: Township 37 North
 Range 6 East
 Town of Cassian
 Oneida County, Wisconsin



Section 2

1. Description of monument found at this corner and if it was accepted, state all evidence (material, testimonial, occupational, plats, records, other monuments) used as a basis for accepting. If not accepted or if nothing was found, state evidence used as basis for establishing location. If reestablished through lost corner proportionate methods, indicate all monuments, distances and directions used to establish. Indicate type of monument found or set and sign post.

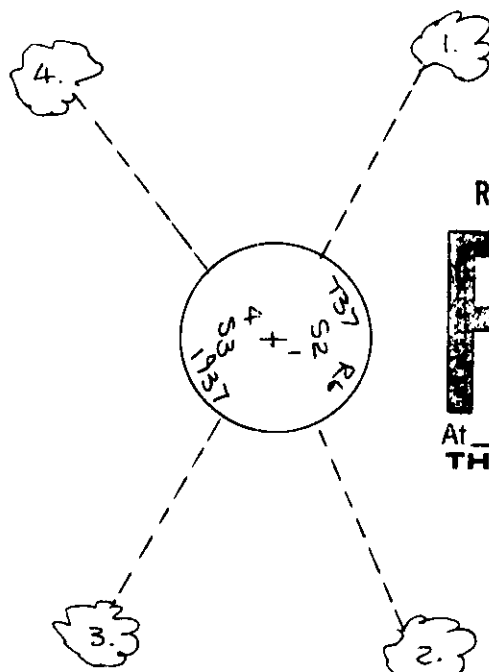
June-July, 1887: Joseph Jenkins, US deputy surveyor notes the following: 39.80 set 1/4 sec. post: blk oak 8 N70W, 27 lks.; w.p. 10 N55W, 15 lks.

January 11, 1937: Maine page 150 notes the following: 40.14-1/2 set 1/4 cor. (official cor.) 155 W of ran. w.p. stp. 30 N41E, 185; w.p. stp. 24 S13E, 1017.

November 25, 1990: I found and accepted a 2-1/2" dia. iron post with brass cap 34" above ground marked as shown below. I found the following witnesses: pine stump/maine) N45E, 58.0 feet; remains of pine stump/maine) S15E, 15.5 feet. I established the following witnesses: set nail in aspen 4" N28E, 30.54 feet; set nail in w.birch 4" S23E, 22.94 feet; set nail in aspen 4" S30W, 19.33 feet; set nail in aspen 4" N37W, 24.19 feet; set plastic sign post NE, 1 foot.

For detail Plan view of corner with ties to at least four witness monuments. If in disagreement with previously established corner, show the distances between the two corners and also indicate the ties to the disputed corner.

1. nail in aspen 4" N28E, 30.54 feet.
 2. nail in w.birch 4" S23E, 22.94 feet.
 3. nail in aspen 4" S30W, 19.33 feet.
 4. nail in aspen 4" N37W, 24.19 feet.
- (not to scale)



REGISTER OF DEEDS OFFICE
 ONEIDA COUNTY, WIS
FILED
 DEC 12 1991
 At _____ O'Clock _____ M
THOMAS H. LEIGHTON
 REGISTER OF DEEDS

WISCONSIN
 Jeffrey W. Austin
 S-1885
 Minocqua,
 WIS.
LAND SURVEYOR

I, Jeffrey W. Austin, Registered Land Surveyor S-1885 certify that the corner location on this record was determined by me or under my direction and control and that this U.S. Public Land Survey Monument Record is correct and complete to the best of my knowledge and belief.

Jeffrey W. Austin
 NOVEMBER 30, 1990
 Date

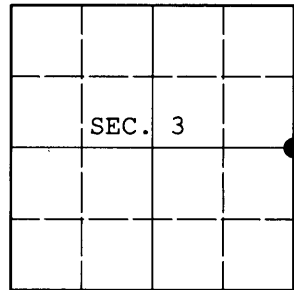
Index no. C-17

3706032000

U.S. PUBLIC LAND SURVEY MONUMENT RECORD

Note: This form is intended and designed to fulfill all requirements of Wisconsin Administrative Code, Chapter A-E 7.08 U.S. Public Land Survey Monument Record (3) (a) (b) (c) (d) (e) (f) (g) (h) (i). An additional sheet may be added if necessary to conform with said requirements.

(a) CORNER LOCATION: Plane Coordinates
 1/4 Cor. of Secs. 2 & 3 X:
 Township 37 North Y:
 Range 6 East of the 4th P.M. Datum:
 Town of Cassian County of Oneida



(b) HISTORY OF ORIGINAL CORNER ESTABLISHMENT

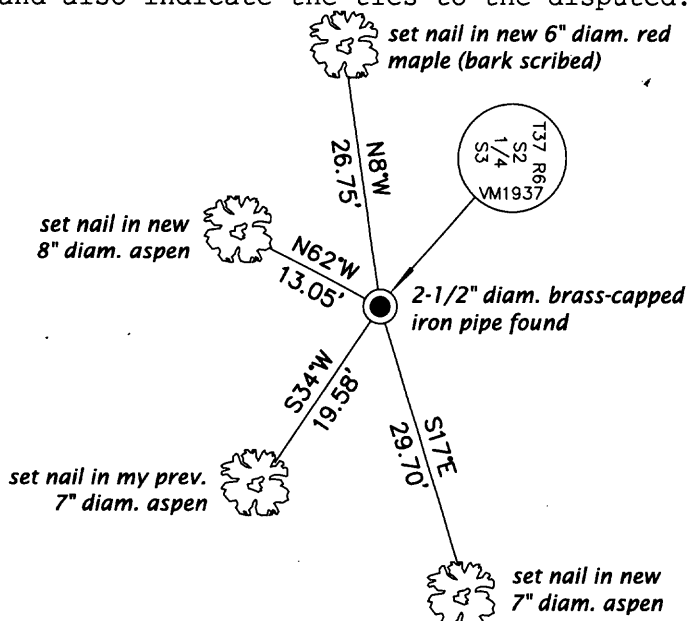
Original Surveyor: Joseph Jenkins Original Accessories:
 Date of Survey: Commenced June, 1863 black oak 8" N70°W, 27 lks.
 Completed July, 1863 white pine 10" N55°W, 15 lks.

(b) (f) (g) (h) Description of monument found at this corner and if it was accepted, state all evidence (material, testimonial, occupational, plats, records, other monuments) used as a basis for accepting. If not accepted or if nothing was found, state evidence used as basis for establishing location. If re-established through lost corner proportionate methods, indicate all monuments, distances and directions used to establish. Indicate type of monument and sign post found or set.

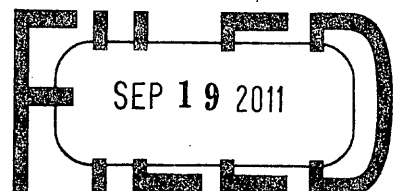
NOTE: This is a perpetuation of a previous USPLS Monument Record by Jeffrey W. Austin, RLS dated November 30, 1990 and filed in the office of the Oneida County Register of Deeds. A complete history of the corner can be found on the previous monument record. I accept the previous location as a true and faithful perpetuation or reestablishment of the original corner location and further perpetuate it as follows.

March 11, 2011: I found and accepted my monument, a 2-1/2" diam. iron pipe with brass cap projecting 30" above the ground surface. Only one of my bearing trees remain. I found or established accessories as shown below and found a white plastic sign post bearing Northeast, 1 ft. dist.

(c) (d) (e) Plan view of corner with ties to at least 4 witness monuments. If in disagreement with previously established corner, show the distances between the two corners and also indicate the ties to the disputed.



REGISTER OF DEEDS OFFICE
 ONEIDA COUNTY, WIS.



At _____ O'Clock _____ M
THOMAS H. LEIGHTON
 REGISTER OF DEEDS



(i) I, Jeffrey W. Austin, Registered Land Surveyor No. S-1885, hereby certify upon honor that the corner location on this record was determined by me or under my direction and control and that this U.S. Public Land Survey Monument Record is correct and complete to the best of my knowledge and belief.

Signature

SEP. 10, 2011
 Date



3706032000 (INDEX NO. C-17)