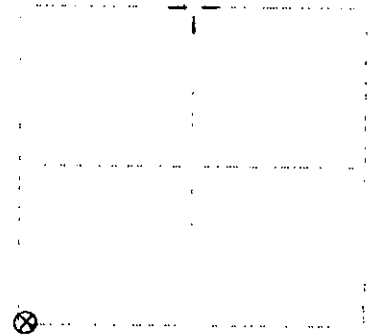


**U.S. PUBLIC LAND SURVEY MONUMENT RECORD**

Note: This form is intended and designed to fulfill all requirements of Wisconsin Administrative Code, Chapter A-E 7.08 U.S. Public Land Survey Monument Record (2010 Wisconsin Stats., ch. S. 19.01). An additional sheet may be added if necessary to conform with said requirements.

(a) Corner location: Township 37 North  
 Range 6 East  
 Town of Cassian  
 Oneida County, Wisconsin



**Section 5**

(b) (1) (a) Description of monument found at this corner and if it was accepted, state all evidence (material, testimonial, occupational, plats, records, other monuments) used as a basis for accepting. If not accepted or if nothing was found, state evidence used as basis for establishing location. If reestablished through lost corner proportionate methods, indicate all monuments, distances and directions used to establish. Indicate type of monument found or set and sign post.

June-July, 1887: Joseph Perkins, US deputy surveyor notes the following: 80.00 set post cor. to secs: 5,6,7,8: blk pine 7 N60W, 29: blk pine 5 N89E, 22.

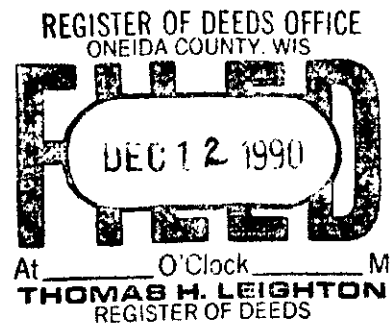
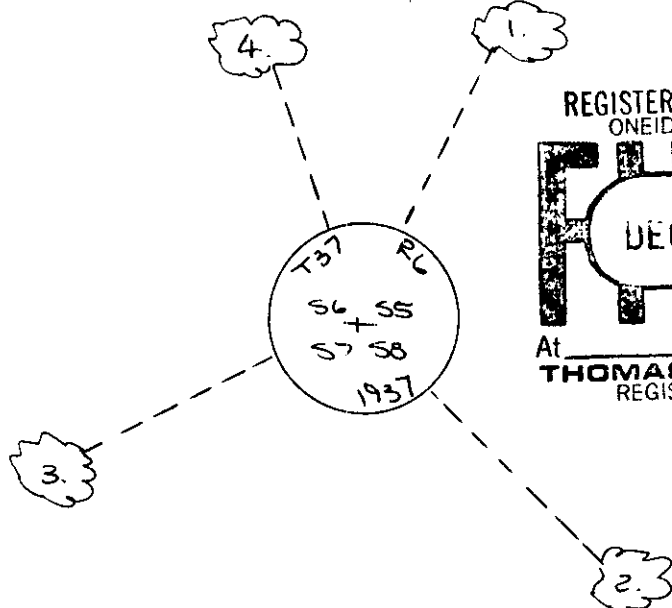
December 17, 1918: Maine page 155 notes the following: At sec. cor. 5-6-7-8 identified by old stk. and stub of orig. BT viz: blk. 4 N26E, 72: others gone. Set official corner 4 marked BTs viz: j.p. 3 N66W, 1.8-1 2; j.p. 5 S71W, .35-3/4; j.p. 5 S30E, 1.6-1 2; j.p. 5 N73E, 1.4-1 2.

November 30, 1990: I found and accepted a 2-1/2 dia. iron post with brass cap 24" above ground marked as shown below. I found the following witnesses: pine stump (maine) N26E, 73.0 feet; pine stump (maine) S30E, 71.2 feet; pine stump with axe marks (maine) S71W, 23.9 feet; pine stump (maine) N60W, 29.0 feet. I established the following witnesses: set nail in w.pine 22" N26E, 73.25 feet; set nail in w.pine 10" S45E, 24.52 feet; set nail in n.pine 10" S63W, 24.7 feet; set nail in n.pine 12" N19W, 63.17 feet; set plastic sign post (none). 1 foot. Note - Maine's j.p. BT at N60W actually stands at N80W, I believe he meant N86W.

(c) If a field view of corner with ties to at least four witness monuments. If in disagreement with previously established corner, show the distances between the two corners and also indicate the ties to the disputed corner.

1. nail in w.pine 22" N26E, 73.25 feet.
2. nail in w.pine 10" S45E, 24.52 feet.
3. nail in n.pine 10" S63W, 24.17 feet.
4. nail in n.pine 12" N19W, 63.17 feet.

(not to scale)



I, Jeffrey W. Austin, Registered Land Surveyor S-1885 certify that the corner location in this record was determined by me or under my direction and control and that this U.S. Public Land Survey Monument Record is correct and complete to the best of my knowledge and belief.

*Jeffrey W. Austin* November 30, 1990

Index no. E-5

FEB 23 2016

AT \_\_\_\_\_ O'CLOCK \_\_\_\_\_ M  
KYLE J. FRANSON  
REGISTER OF DEEDS

# U.S. PUBLIC LAND SURVEY MONUMENT RECORD

NE CORNER, SECTION 7 T. 37 N., R. 6 E., TOWN OF Cassian, ONEIDA COUNTY, WISCONSIN.

COUNTY PLANE COORDINATES  
(NAD-83/91 Adj.) (NAD-83, WISCORS 2011 Adj. RTK)  
NORTH 194138.955 (194138.68)

STATE PLANE COORDINATES

EAST 170855.648 (170856.48)

NORTH \_\_\_\_\_

EAST \_\_\_\_\_

EAST \_\_\_\_\_

SCALE FACTOR \_\_\_\_\_

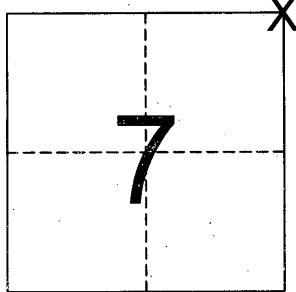
SCALE FACTOR \_\_\_\_\_

blazing found on S. face of a 30" White Pine tree, 1' above grade N 26° E, 71.80 feet.

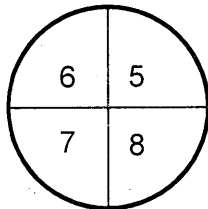
THETA ANGLE \_\_\_\_\_

THETA ANGLE \_\_\_\_\_

LOCATION SKETCH

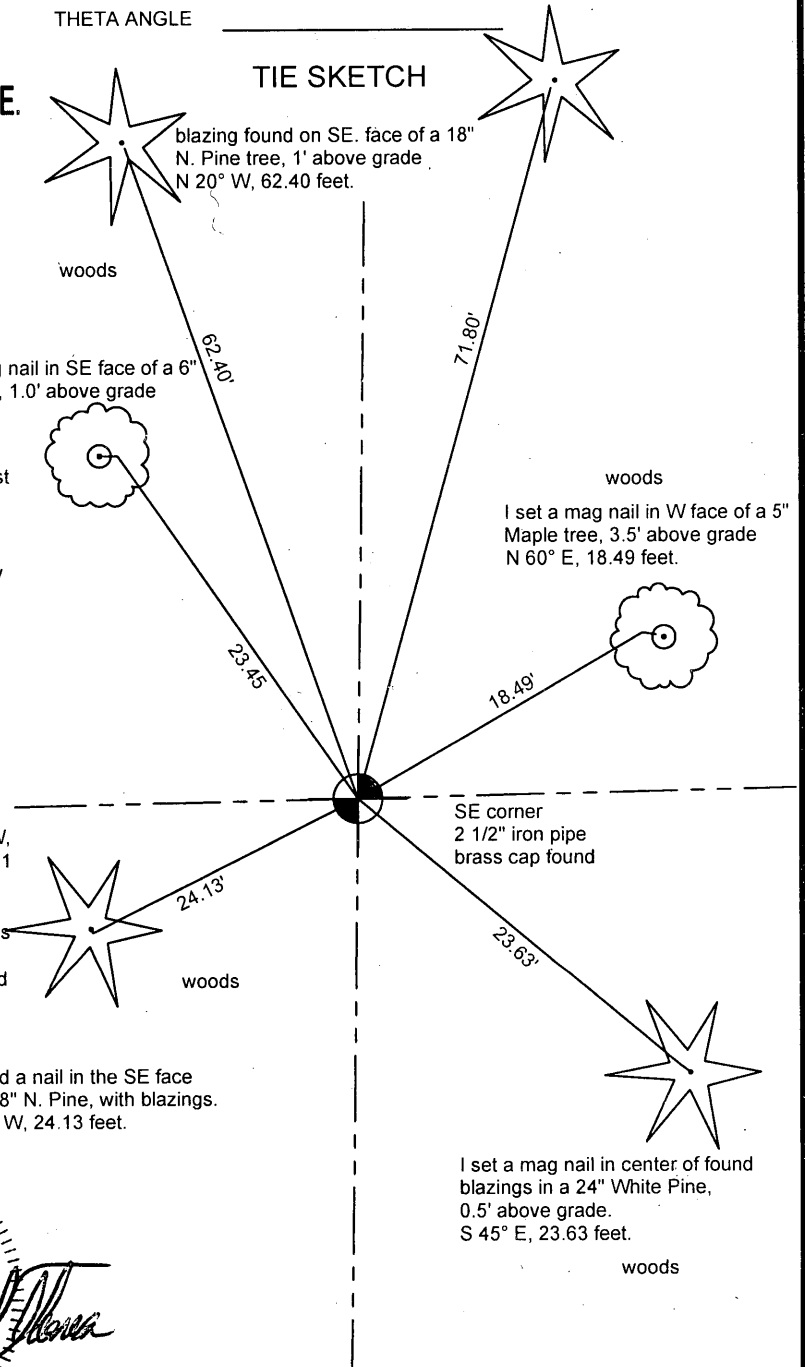


T. 37 N.-R. 6 E.



I set a mag nail in SE face of a 6" Maple tree, 1.0' above grade

TIE SKETCH



HISTORY

July 5th, 1863, Joseph H. Jenkins established this corner. He set a wood post with two BTs: 7" Black Pine, N83°W, 29 Links (19.14') and 6" Black Pine, N28°E, 22 Links (14.52').

12-17-1936, County Surveyor, V.M. Maine, in Book 1, page 153, Identified by old stk. and stub of Orig. B.T.. viz: - B.P. 6" N28E., 22 Links (14.52') others gone. He Set Official Corner & marked B.Ts. viz: J.P. 5" S71°W, 35 3/4 Links (23.60'); J.P. 5" S30°E., 16 1/2 Links (10.89'); 1937 - Maine placed a 2" x 60" iron pipe/brass cap.

1957, Owen-Illinois section sheet shows nothing.

11-30-1990, Jeffrey W. Austin, S-1885, found a 2-1/2 dia. iron post with brass cap 24" above ground. He found the following witnesses: pine stump (maine) N83W, 20.1 feet. and established witnesses: set nail in w.pine 22" N26E, 73.25 feet; set nail in w.pine 10" S45E, 24.52 feet; set nail in n.pine 10" S63W, 24.17 feet; set nail in n.pine 12" N19W, 63.17 feet; set plastic sign post north 1 foot.

04-17-2015 Donald J. Thoma, S - 2470, I found a 2 1/2" iron pipe with a brass cap, tall leaning SE slightly. I streighten up accepted the monument and took ties. (I measured the monument being S 71°28'14" E, 0.87' from the published county coordinates)

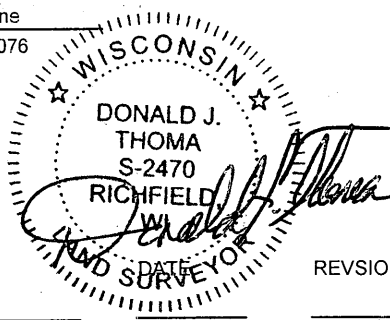
Survey # S-2470

*May 27th 2015*

I found a nail in the SE face of a 18" N. Pine, with blazings. S 63° W, 24.13 feet.

Firm (Surveyor) Accurate Surveying & Engineering, LLP

(Address) 2911 Wildlife Lane  
Richfield, WI 53076



RECEIVED FOR RECORD

SIGNED \_\_\_\_\_  
ONEIDA COUNTY SURVEYOR

REVISIONS \_\_\_\_\_

SIGNED \_\_\_\_\_  
ONEIDA COUNTY SURVEYOR

COUNTY KEY NUMBER  
370606000

USFS KEY NUMBER  
E 5