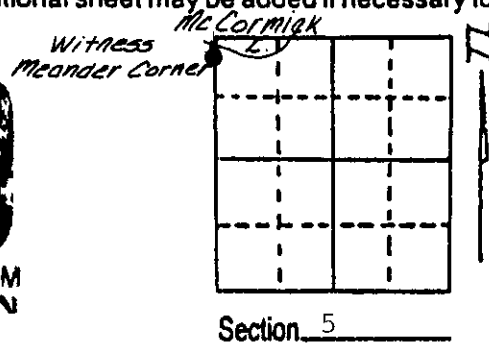


# U.S. PUBLIC LAND SURVEY MONUMENT RECORD

**Note:** This form is intended and designed to fulfill all requirements of Wisconsin Administrative Code, Chapter A-E 7.08 U.S. Public Land Survey Monument Record (3) (a) (b) (c) (d) (e) (f) (g) (h) (i). An additional sheet may be added if necessary to conform with said requirements.

(a) Corner location: Township 37 North  
 Range 6 East/West  
 Town/City/Village Cassian  
 County Oneida

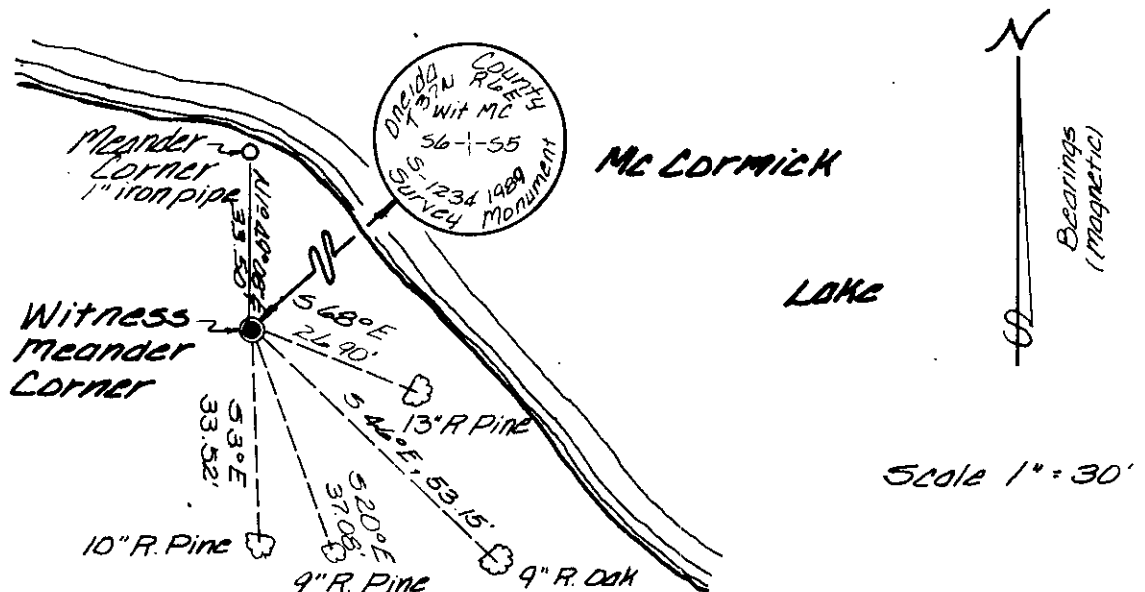
REGISTER OF DEEDS OFFICE  
 ONEIDA COUNTY, WIS.  
**FILED**  
 AUG 26 1990  
 At 8:00 O'Clock M  
**THOMAS H. LEIGHTON**  
 REGISTER OF DEEDS



(b) (f) (g) (h) Description of monument found at this corner and if it was accepted, state all evidence (material, testimonial, occupational, plats, records, other monuments) used as a basis for accepting. If not accepted or if nothing was found, state evidence used as basis for establishing location. If reestablished through lost corner proportionate methods, indicate all monuments, distances and directions used to establish.

July 1863, J. Jenkins, Deputy Surveyor, set meander post. Bearing trees: 8" W. Pine, N75°W, 25 links; 12" W. Pine, N47°E, 13 links.  
 Dec. 1936, V. Maine, Oneida County Surveyor, found stumps of original B.T.'s: 12" W. Pine, N75°W, 26 links; 12" W. Pine, N27°E, 12½ links. Vaughan's B.T.'s: 14" Yellow Pine, S27½°E, 40 ¾ links.  
 Oct. 31st, 1975 - S.L. Foltz, Registered Land Surveyor, identifies meander corner on Oneida County CSM No. 242 as being monumented with iron pipe.  
 Aug. 19th, 1989 - James D. Rein, Registered Land Surveyor, recovered 1" dia. iron pipe. Because corner monument is in danger of being obliterated by shoreline erosion I place a capped 2" dia. X 30" long aluminum monument S1°49'08"W, 33.50 feet on section line for Witness Corner. Made ties to witness corner as shown below in plan view.

(c) (d) (e) Plan view of corner with at least 4 witness monuments. If in disagreement with previously established corner, show the distances between the two corners and also indicate the ties to the disputed corner.



(i) I, James D. Rein RLS No. 1234  
 (type or print name) certify that the corner location on this record was determined by me or under my direction and control and that this U.S. Public Land Survey Monument Record is correct and complete to the best of my knowledge and belief.



James D. Rein August 23rd., 1989  
 Signature Date

Index No. A B 5

3706063800