

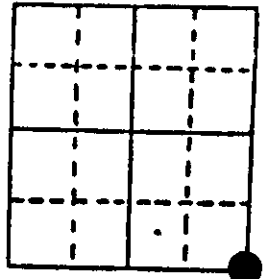
# U.S. PUBLIC LAND SURVEY MONUMENT RECORD

**Note:** This form is intended and designed to fulfill all requirements of Wisconsin Administrative Code, Chapter A-E 7.08 U.S. Public Land Survey Monument Record (3) (a) (b) (c) (d) (e) (f) (g) (h) (i). An additional sheet may be added if necessary to conform with said requirements.

(a) Corner location: Township 37 North  
 Range 6 East/West

Town/City/Village Cassian

County Oneida



Section 7

(b) (f) (g) (h) Description of monument found at this corner and if it was accepted, state all evidence (material, testimonial, occupational, plats, records, other monuments) used as a basis for accepting. If not accepted or if nothing was found, state evidence used as basis for establishing location. If reestablished through lost corner proportionate methods, indicate all monuments, distances and directions used to establish. Indicate type of monument found or set and sign post.

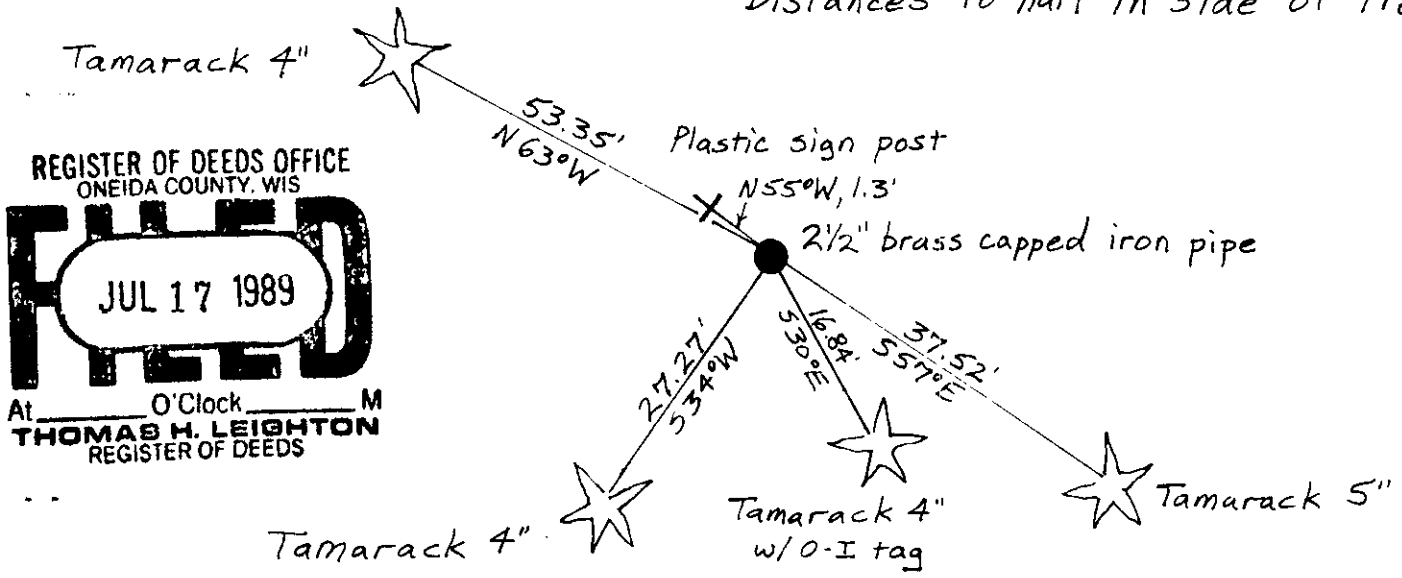
June-July, 1863, Joseph Jenkins set a wood post: Y.Pine 16" N28W, 2091ks., no other tree near.

1957, Owens-Illinois section sheet shows corner by others: Tamarack 3" S32W, 27.0', Tamarack 3" S83E, 33.0'.

5-17-89, I found and accepted a 2 1/2" dia. brass capped iron pipe: set spike in Tamarack 4" S34W, 27.27', set spike in Tamarack 4" S30E, 16.84' set spike in Tamarack 4" N63W, 53.35', set spike in Tamarack 5" S57E, 37.52', set plastic survey marker sign N55W, 1.3'.

(c) (d) (e) Plan view of corner with ties to at least 4 witness monuments. If in disagreement with previously established corner, show the distances between the two corners and also indicate the ties to the disputed corner.

*Distances to nail in side of tree*



REGISTER OF DEEDS OFFICE  
 ONEIDA COUNTY, WIS  
**FILED**  
 JUL 17 1989  
 At \_\_\_\_\_ O'Clock \_\_\_\_\_ M  
 THOMAS H. LEIGHTON  
 REGISTER OF DEEDS

(i) I, JEFFREY W. AUSTIN S-1885  
 (type or print name) certify that the corner location on this record was determined by me or under my direction and control and that this U.S. Public Land Survey Monument Record is correct and complete to the best of my knowledge and belief.

Signature *Jeffrey W. Austin* Date JUNE 30, 1989



Index No. 3-5

3706070000