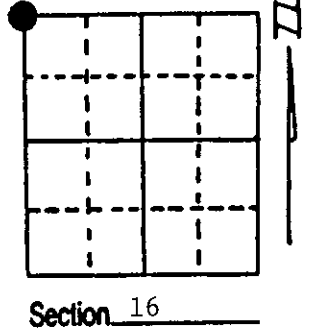


# U.S. PUBLIC LAND SURVEY MONUMENT RECORD

**Note:** This form is intended and designed to fulfill all requirements of Wisconsin Administrative Code, Chapter A-E 7.08 U.S. Public Land Survey Monument Record (3) (a) (b) (c) (d) (e) (f) (g) (h) (i). An additional sheet may be added if necessary to conform with said requirements.

(a) Corner location: Township 37 North  
 Range 6 East/West  
 Town/City/Village Cassian  
 County Oneida

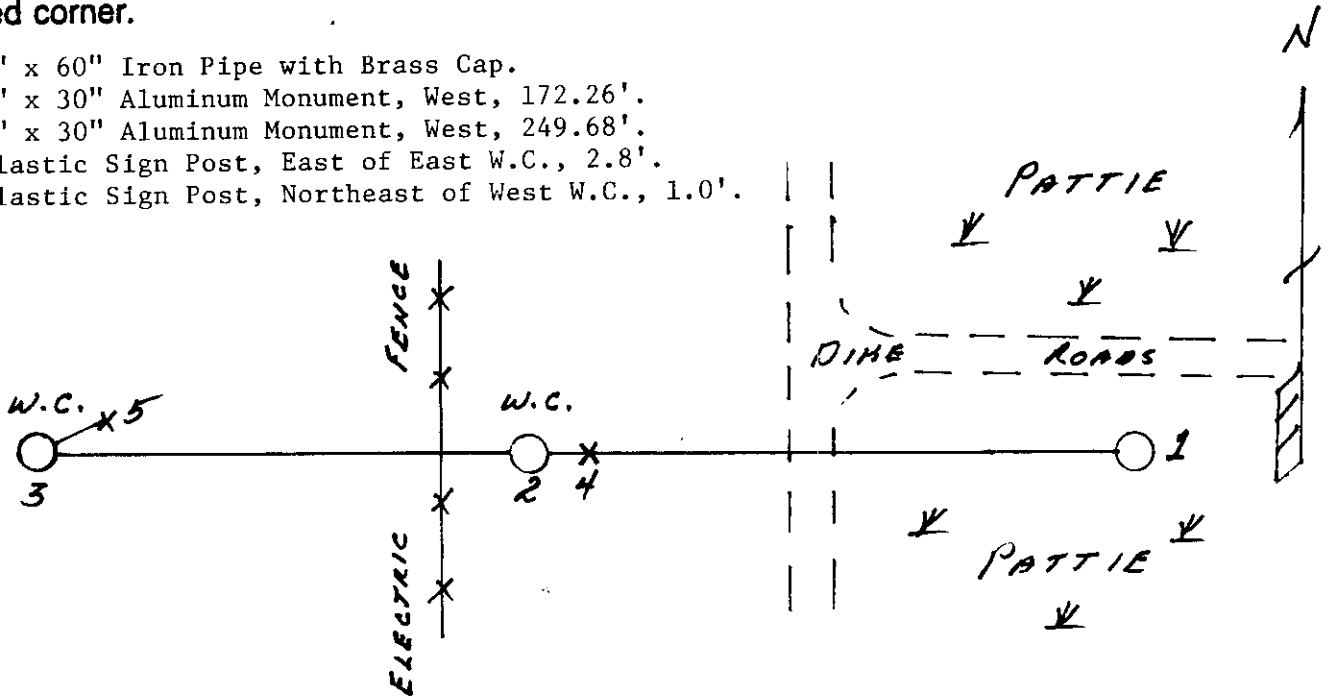


(b) (f) (g) (h) Description of monument found at this corner and if it was accepted, state all evidence (material, testimonial, occupational, plats, records, other monuments) used as a basis for accepting. If not accepted or if nothing was found, state evidence used as basis for establishing location. If reestablished through lost corner proportionate methods, indicate all monuments, distances and directions used to establish. Indicate type of monument found or set and sign post.

- 1863 - Joseph H. Jenkins established this corner, set a wood post and made two BTs:  
 6" Jack Pine, N86°E, 93 Links (61.38')    8" Jack Pine, S87°E, 116 Links (76.56')
- 1936 - Vern Maine restored corner and set monument in open swamp with one BT:  
 9" Red Pine, N51°E, 230 1/4 Links (151.96')
- 11/16/1994 - Milo E. Stefan found Maine's monument on very North edge of developed cranberry bed, flush with ground. So that corner would not be lost, we set two Witness Monuments. No BTs available.

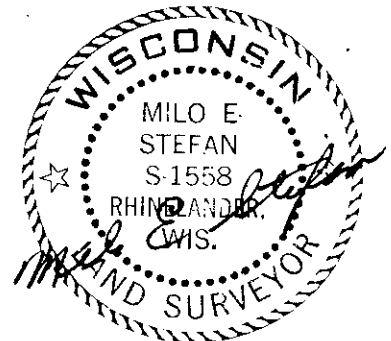
(c) (d) (e) Plan view of corner with ties to at least 4 witness monuments. If in disagreement with previously established corner, show the distances between the two corners and also indicate the ties to the disputed corner.

- 1) 2" x 60" Iron Pipe with Brass Cap.
- 2) 2" x 30" Aluminum Monument, West, 172.26'.
- 3) 2" x 30" Aluminum Monument, West, 249.68'.
- 4) Plastic Sign Post, East of East W.C., 2.8'.
- 5) Plastic Sign Post, Northeast of West W.C., 1.0'.



(i) I, Milo E. Stefan  
 (type or print name) certify that the corner location on this record was determined by me or under my direction and control and that this U.S. Public Land Survey Monument Record is correct and complete to the best of my knowledge and belief.

Milo E. Stefan                      November 28, 1994  
 Signature                                      Date



Index No. J-9

3706080000