

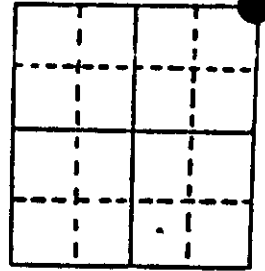
U.S. PUBLIC LAND SURVEY MONUMENT RECORD

Note: This form is intended and designed to fulfill all requirements of Wisconsin Administrative Code, Chapter A-E 7.08 U.S. Public Land Survey Monument Record (3) (a) (b) (c) (d) (e) (f) (g) (h) (i). An additional sheet may be added if necessary to conform with said requirements.

(a) Corner location: Township 37 North
 Range 6 East/West

Town/City/Village Cassian

County Oneida



Section 15

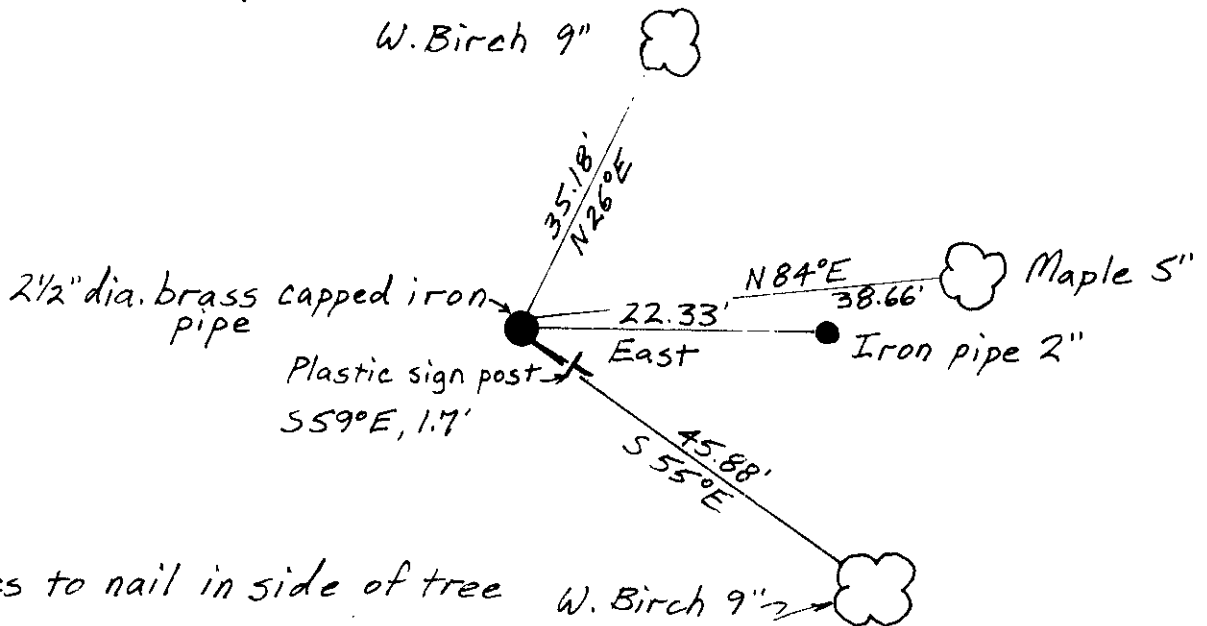
(b) (f) (g) (h) Description of monument found at this corner and if it was accepted, state all evidence (material, testimonial, occupational, plats, records, other monuments) used as a basis for accepting. If not accepted or if nothing was found, state evidence used as basis for establishing location. If reestablished through lost corner proportionate methods, indicate all monuments, distances and directions used to establish. Indicate type of monument found or set and sign post.

June-July, 1863, Joseph Jenkins set a wood post: Aspen 8" N15W, 251ks., Aspen 10" N38E, 291ks.

June, 1971, Northwoods Surveyors "TIMBER HILLS" map no. C-256 shows corner as Oneida County brass capped iron pipe: Pine Stp. 9" N64E, 21.8', N.Pine 18" S80W, 22.9'.

5-17-89, I found and accepted a 2½" dia. brass capped iron pipe: found iron pipe 2" East, 22.33', set spike in W.Birch 9" N26E, 35.18', set spike in W.Birch 9" S55E, 45.88', set spike in Maple 5" N84E, 38.66', set plastic survey marker sign S59E, 1.7'.

(c) (d) (e) Plan view of corner with ties to at least 4 witness monuments. If in disagreement with previously established corner, show the distances between the two corners and also indicate the ties to the disputed corner.



(i) I, JEFFREY W. AUSTIN S-1885
 (type or print name) certify that the corner location on this record was determined by me or under my direction and control and that this U.S. Public Land Survey Monument Record is correct and complete to the best of my knowledge and belief.

Signature [Handwritten Signature] Date JUNE 30, 1989



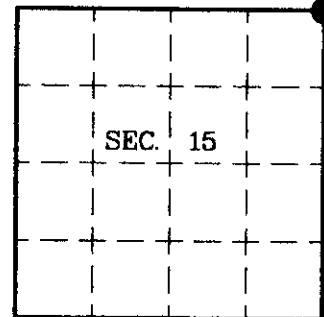
Index No. 2-17

3706100000

U.S. PUBLIC LAND SURVEY MONUMENT RECORD

Note: This form is intended and designed to fulfill all requirements of Wisconsin Administrative Code, Chapter A-E 7.08 U.S. Public Land Survey Monument Record (3)(a)(b)(c)(d)(e)(f)(g)(h)(i). An additional sheet may be added if necessary to conform with said requirements.

(a) CORNER LOCATION: State Plane Coordinates
 Northeast Corner of Section 15 X
 Township 37 North Y
 Range 6 East Datum Base
 Town of Cassian County of Oneida



(b) HISTORY OF ORIGINAL CORNER ESTABLISHMENT

Original Surveyor: Joseph Jenkins
 Date of Survey: Commenced June 1863
 Completed July 1863

Original B.T.s

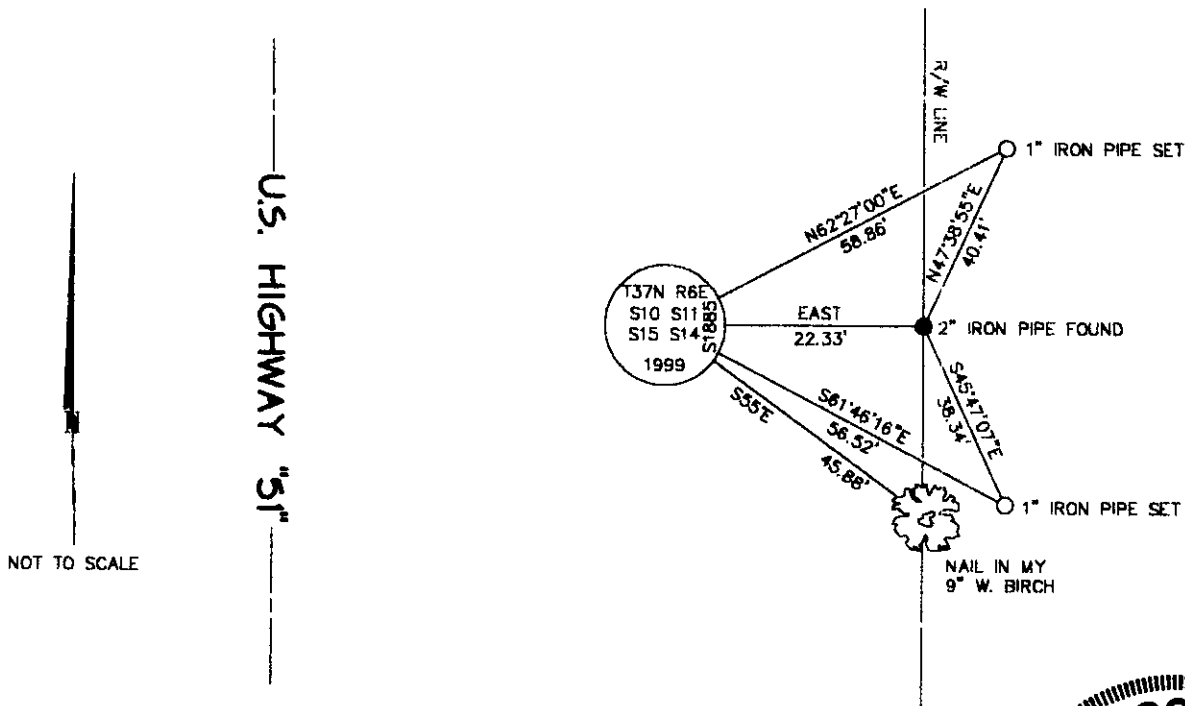
Aspen 8 N15°W 25 links
 Aspen 10 N38°E 29 links

(b)(f)(g)(h) Description of monument found at this corner and if it was accepted, state all evidence (material, testimonial, occupational, plats, records, other monuments) used as a basis for accepting. If not accepted or if nothing was found, state evidence used as basis for establishing location. If reestablished through lost corner proportionate methods, indicate all monuments, distances and directions used to establish. Indicate type of monument and sign post found or set.

This corner was previously restored by Jeffrey W. Austin, Registered Land Surveyor #S-1885 on June 30, 1989. The complete history of this corner can be found on my U.S. Public Land Survey Monument Record.

August 30, 1999: I set a 2-1/2" dia., 30" long aluminum pipe with 3-1/4" dia. Oneida Co. aluminum cap marked as shown below. The brass-capped monument described in my previous monument record was tied out prior to highway construction as shown below. The new monument is in a rock cairn as it is somewhat loose due to rocky conditions. I established accessories as shown below and set a plastic sign post East, 2 feet.

(c)(d)(e) Plan view of corner with ties to at least 4 witness monuments. If in disagreement with previously established corner, show the distances between the two corners and also indicate the ties to the disputed.



NOT TO SCALE

(i) I, Jeffrey W. Austin, Registered Land Surveyor S-1885, hereby certify that the corner location on this record was determined by me or under my direction and control and that this U.S. Public Land Survey Monument Record is correct and complete to the best of my knowledge and belief.

Signature

Date

1-2-2000



INDEX NO. J-17

370610000