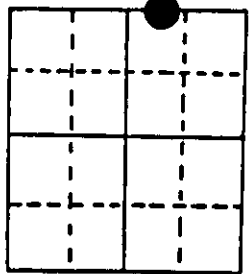


U.S. PUBLIC LAND SURVEY MONUMENT RECORD

Note: This form is intended and designed to fulfill all requirements of Wisconsin Administrative Code, Chapter A-E 7.08 U.S. Public Land Survey Monument Record (3) (a) (b) (c) (d) (e) (f) (g) (h) (i). An additional sheet may be added if necessary to conform with said requirements.

(a) Corner location: Township 37 North
 Range 6 East/West

Town/City/Village Cassian
 County Oneida



Section 14

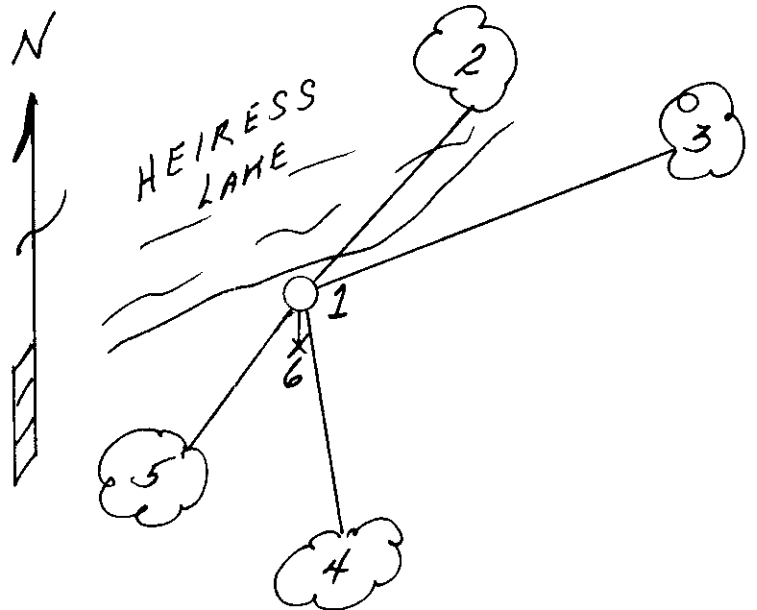
(b) (f) (g) (h) Description of monument found at this corner and if it was accepted, state all evidence (material, testimonial, occupational, plats, records, other monuments) used as a basis for accepting. If not accepted or if nothing was found, state evidence used as basis for establishing location. If reestablished through lost corner proportionate methods, indicate all monuments, distances and directions used to establish. Indicate type of monument found or set and sign post.

- 1863 - Joseph H. Jenkins established this Meander Corner on the East shore of a lake at 26.52 chains West of the Section Corner. He set a wood post with two BTs:
 10" Aspen, S3°E, 16 Links (10.56') 12" White Pine, S85°W, 6 Links (3.94')
- 11/13/1936 - Vern Maine found stump of original Pine BT, marks plain. He set a Red Pine post with two BTs:
 14" White Pine Stump, N63°W, 10 Links (6.6')
 12" White Pine Stump, S47°W, 38 3/4 Links (25.575')
- 6/10/1996 - Milo E. Stefan found mound of stone with post point 12" - 14" deep with stump remains of original and both of Maines BTs. We set an aluminum monument in post hole, made four new BTs and placed a plastic sign post.

(c) (d) (e) Plan view of corner with ties to at least 4 witness monuments. If in disagreement with previously established corner, show the distances between the two corners and also indicate the ties to the disputed corner.

- 1) 2" x 30" Aluminum monument with mound of stone.
- 2) 6" Red Maple, N23°E, 16.68'
- 3) 18" White Pine, N53°E, 88.35'
- 4) 6" Red Maple, S16°E, 48.61'
- 5) 6" White Birch, S30°W, 15.11'
- 6) Plastic sign post, South, 1.0'

Distances from nail in side of BTs
 Stump blaze scribed "BT"
 BT tags on face of each BT



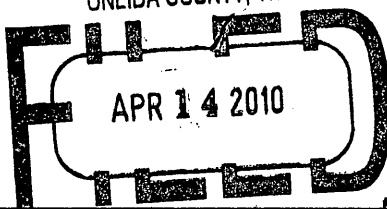
(i) I, Milo E. Stefan
 (type or print name) certify that the corner location on this record was determined by me or under my direction and control and that this U.S. Public Land Survey Monument Record is correct and complete to the best of my knowledge and belief.

Milo E. Stefan
 Signature

June 18, 1996
 Date



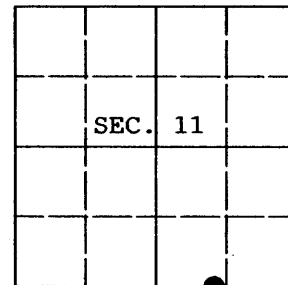
Stamp
 3706110012



U.S. PUBLIC LAND SURVEY MONUMENT RECORD

Note: This form is intended and designed to meet all requirements of Wisconsin Administrative Code, Chapter A-E 7.08 U.S. Public Land Survey Monument Record (a) (b) (c) (d) (e) (f) (g) (h) (i). An additional sheet may be added if necessary to conform with said requirements.

(a) CORNER LOCATION: Plane Coordinates
 Meander Cor. of Secs. 11 & 14 N: 188,674.363 USft
 Township 37 North E: 190,327.983 USft
 Range 6 East of the 4th P.M. Datum: NAD 83/91, Oneida Grid
 Town of Cassian County of Oneida



(b) HISTORY OF ORIGINAL CORNER ESTABLISHMENT

Original Surveyor: Joseph Jenkins Original Accessories:
 Date of Survey: Commenced June, 1863 W. Pine 12" S.85°W., 6 lks.
 Completed July, 1863 Aspen 10" S.3°E., 16 lks.

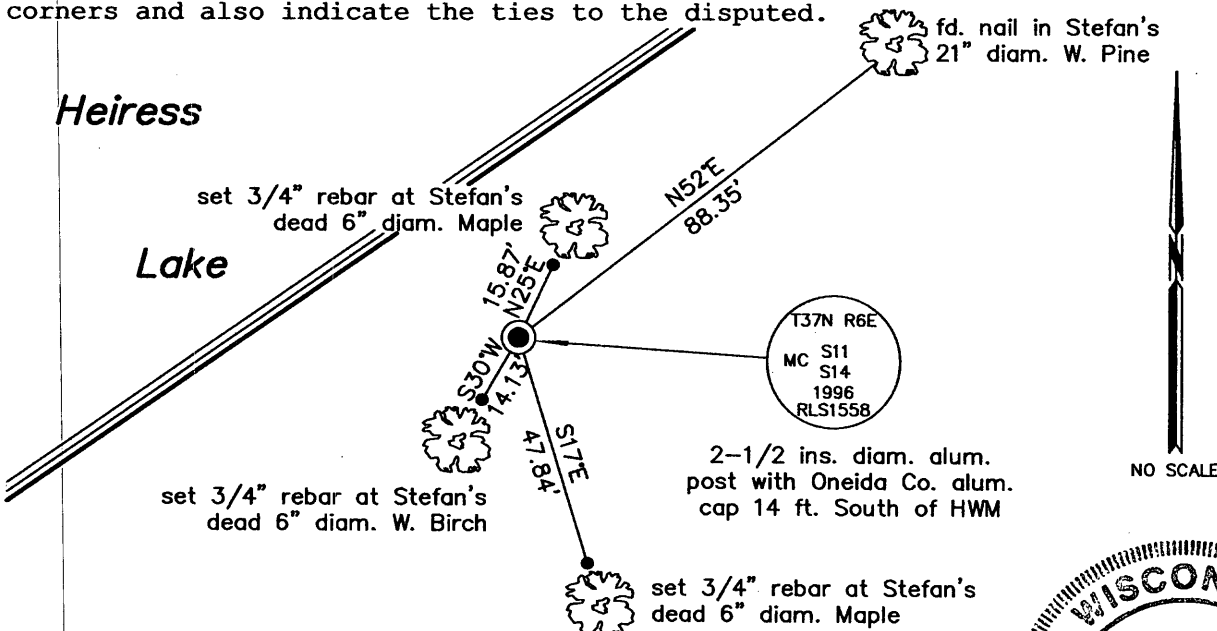
(b)(f)(g)(h) Description of monument found at this corner and if it was accepted, state all evidence (material, testimonial, occupational, plats, records, other monuments) used as a basis for accepting. If not accepted or if nothing was found, state evidence used as basis for establishing location. If re-established through lost corner proportionate methods, indicate all monuments, distances and directions used to establish. Indicate type of monument and sign post found or set.

NOTE: This is a perpetuation of a previous USPLS Monument Record by Milo E. Stefan, RLS dated June 18, 1996 and filed in the office of the Oneida County Register of Deeds. A complete history of the corner can be found on the previous monument record. I accept the previous location as a true and faithful perpetuation or reestablishment of the original corner location and further perpetuate it as follows.

June 24, 2009: I found and accepted Stefan's monument, a 2-1/2 ins. diam. aluminum post with Oneida Co. aluminum cap projecting 8 ins. above a rock cairn. I found only one of Stefan's trees still alive so I set rebars at his remaining dead trees. I established accessories as shown below and found a white plastic sign post bearing South, 1 ft. dist.

Coordinate values shown are derived from a static GPS observation and are computed based on the published values of Oneida Co. control station 284S.

(c)(d)(e) Plan view of corner with ties to at least 4 witness monuments. If in disagreement with previously established corner, show the distances between the two corners and also indicate the ties to the disputed.



(i) I, Jeffrey W. Austin, Registered Land Surveyor No. S-1885, hereby certify upon honor that the corner location on this record was determined by me or under my direction and control and that this U.S. Public Land Survey Monument Record is correct and complete to the best of my knowledge and belief.

Signature: *[Handwritten Signature]* Date: MAR. 30, 2010



3706110012