

# U.S. PUBLIC LAND SURVEY MONUMENT RECORD

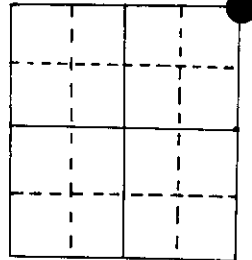
Note: This form is intended and designed to fulfill all requirements of Wisconsin Administrative Code, Chapter A-E 5.02, U.S. Public Land Survey Monument Record (3) (a) (b) (c) (d) (e) (f) (g) (h) (i). An additional sheet may be added if necessary to conform with said requirements.

(a) Corner location: Township 37 North

Range 6 East/~~13~~

Town/~~Cassian~~ of Cassian

County Oneida



NE cor Section 13

2" iron pipe with brass cap

(b) (f) (g) (h) Description of monument found at this corner and if it was accepted, state all evidence (material, testimonial, occupational, plats, records, other monuments) used as a basis for accepting. If not accepted or if nothing was found, state evidence used as basis for establishing location. If reestablished through lost corner proportionate methods, indicate all monuments, distances and directions used to establish.

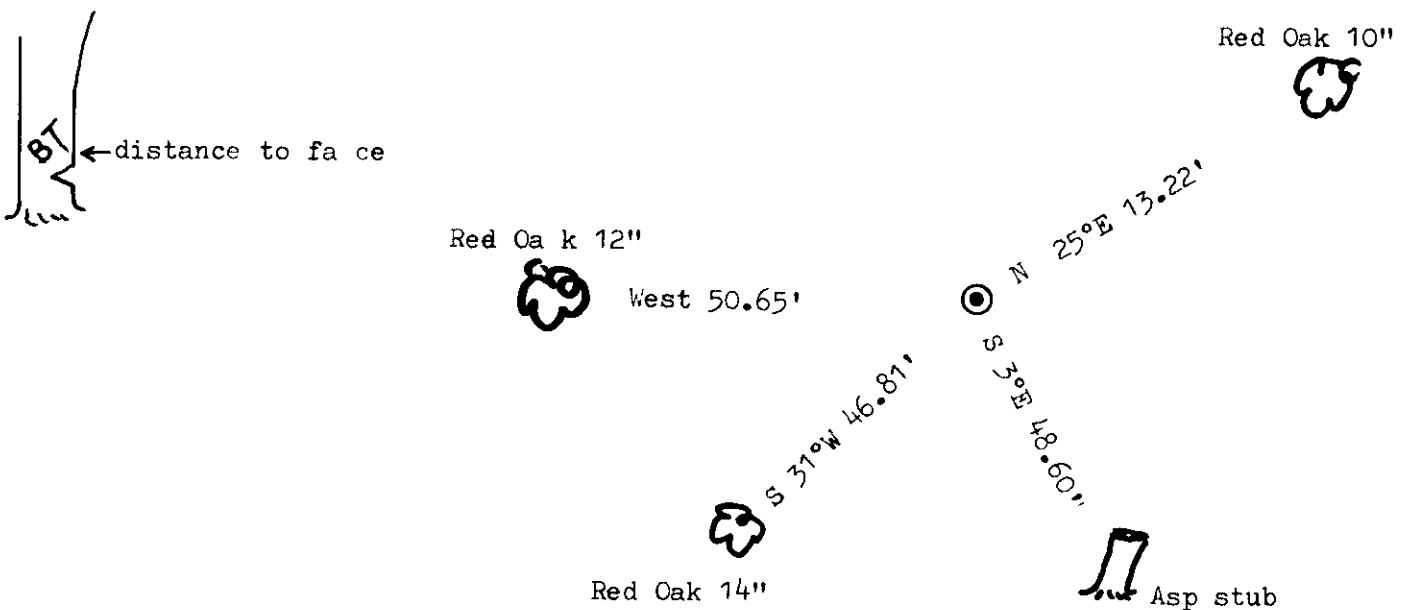
Original Sept. 1860. OBT'S PW 24" S 32°E 31 lks, PW 10" S 63°W 17 lks  
PW 22" N 26°W 51 lks, BW 12" N 66°E 30 lks

V.M. Maine, 1936, Dec. 11, found iron pipe & OBT stp PW 18" S 32°E 31 lks  
PW 24" S 63°W 17 lks

Replaced i.p. with Official Corner (brass cap)  
Made BT's Blk Oak 10" S 67°E 77 lks, Blk Oak 4" N 19°E 23 lks

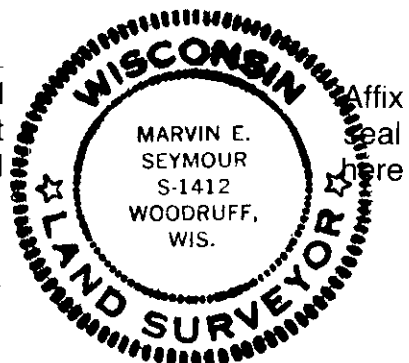
M. Seymour found brass cap on 12/30/83 and BT's (newer BT's made by J. Kasson in 5/83 but were not recorded)

(c) (d) (e) Plan view of corner with ties to at least 4 witness monuments. If in disagreement with previously established corner, show the distances between the two corners and also indicate the ties to the disputed corner.



(i) I, Marvin E. Seymour  
(type or print name) certify that the corner location on this record was determined by me or under my direction and control and that this U.S. Public Land Survey Monument Record is correct and complete to the best of my knowledge and belief.

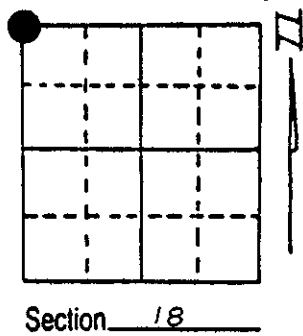
Marvin E. Seymour July 9, 1984  
Signature Date



# U.S. PUBLIC LAND SURVEY MONUMENT RECORD

**Note:** This form is intended and designed to fulfill all requirements of Wisconsin Administrative Code, Chapter A-E 5.02, U.S. Public Land Survey Monument Record (3) (a) (b) (c) (d) (e) (f) (g) (h) (i). An additional sheet may be added if necessary to conform with said requirements.

(a) Corner location: Township 37 North  
 Range 7 East ~~West~~  
 Town/City/Village Cassian  
 County Oneida



(b) (f) (g) (h) Description of monument found at this corner and if it was accepted, state all evidence (material, testimonial, occupational, plats, records, other monuments) used as a basis for accepting. If not accepted or if nothing was found, state evidence used as basis for establishing location. If reestablished through lost corner proportionate methods, indicate all monuments, distances and directions used to establish.

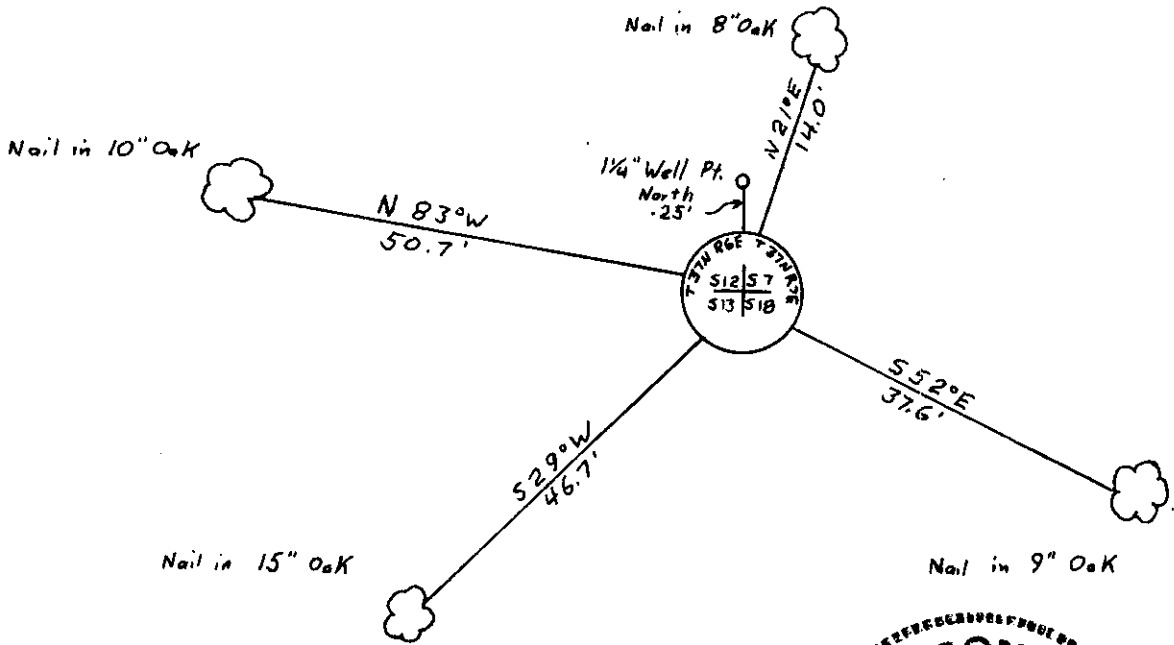
Found 2" diameter Brass cap stamped to identify corner on 2" iron pipe.

1-1/4" well point                      North                      .25 feet

Oak	8"	N21°E	14.0 feet
Oak	10"	N83°W	50.7 feet
Oak	15"	S29°W	46.7 feet
Oak	9"	S52°E	37.6 feet

REGISTER OF DEEDS OFFICE  
 ONEIDA COUNTY, WIS.  
**FILED**  
 AUG 14 1986  
 At 8:00...O'clock...M  
 DORIS VERAGE KUEHN  
 REGISTER OF DEEDS

(c) (d) (e) Plan view of corner with ties to at least 4 witness monuments. If in disagreement with previously established corner, show the distances between the two corners and also indicate the ties to the disputed corner.



(i) I, Dennis B. Roberts  
 (type or print name) certify that the corner location on this record was determined by me or under my direction and control and that this U.S. Public Land Survey Monument Record is correct and complete to the best of my knowledge and belief.

Dennis B. Roberts                      July 22, 1986  
 Signature                                      Date

WISCONSIN  
 DENNIS B. ROBERTS  
 S-1863  
 HARSHAW WIS.  
 LAND SURVEYOR

Index No. 11

3706120000