

CERTIFIED LAND CORNER RESTORATION

State of Wisconsin }
County of Oneida } ss.

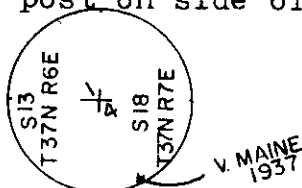
I Michael J. Romportl, do hereby certify that on the 12th day of December, 1981, I found evidence of the West 1/4 corner of Section 18 Township 37 North, Range 7 East, Fourth Principal Meridian, as described hereon; and that from this evidence I established a new monument and accessories as described hereon to perpetuate the original location of this corner:

Description of original monument and accessories and subsequent restorations:

- 1860 Alferd Millard set org. cor B.T.s W. Pine 9 S32°W, 8 lks. W Pine 9 N 24° E 21lks.
- 1936 V.M. Maine fd. stumps of org. B.T.s and fd. the hole of org. 1/4 stake marked W Pine stp. 16" S 59° W .60; set a official corner
- James Griffin 1962 recovered cor.
- 1975 Lester Schmit recovered cor.

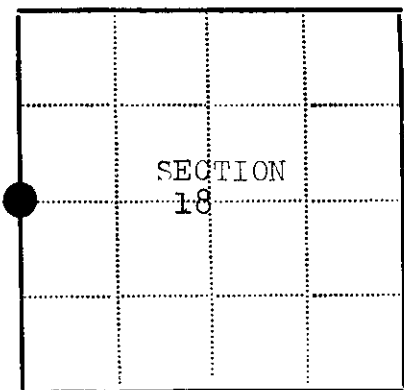
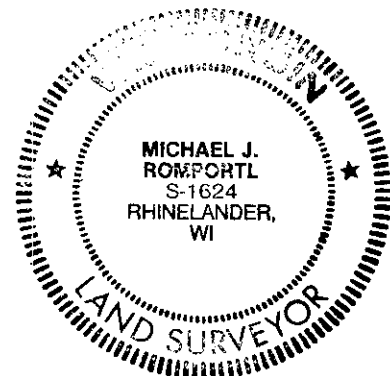
Description of corner evidence found:

- fd. a capped iron pipe 3" above ground with rocks at the base stamped as shown
- fd. metal tag on tree
- fd. Wis. Convervation post on side of road 1ch. 19lks. east of cor.



Description of monument and accessories I established to perpetuate the location of this corner:

- pipe in good condition made the following witnesses:
- 5" Maple S 86° W 25.48'
- 3" Maple S 55° E 49.58'
- 1" iron pipe N 6° W 20.48'
- scribed trees B T
- mag. bearings
- measured to P.K. nail in face of blaze



● - Corner monument restored
□ -

Resident witnesses.....

Dated at Rhinelanders Wisconsin, this 12th day of December 1981.

Signature Michael J. Romportl Title Reg. Land Surveyor
(County Surveyor, Registered Land Surveyor, or other duly authorized official)

Surveyors Registration No. 1624

Office of Register of Deeds County of Oneida

I hereby certify that the within instrument was filed in this office for record on the 11 day of June 1986 and was filed in Book No. Page No. of County Records.

Signature Doris Verage Kubas Title Register of Deeds
Cynthia A. Pios Deputy

Township....., Range....., Section....., Index No....., Page No.....

3706/32000

Stock No. 26273

Stock No. 26272

State of Wisconsin

County of Oneida } ss.

I, John H. Fisher, do hereby certify that on the 6th day of October, 1983, I found evidence of the West one quarter corner of Section 18, Township 37 North, Range 7 East, Fourth Principal Meridian, as described hereon; and that from this evidence I established a new monument and accessories as described hereon to perpetuate the original location of this corner.

Resident witnesses:

None

CERTIFIED LAND CORNER RESTORATION
U. S. PUBLIC LAND SURVEY MONUMENT RECORD

Index No. 2-1

History of original corner establishment:

The original Government survey was performed by Alfred Millard, Deputy Surveyor August, 1860.

Set Wood Post:

9"	White Pine	S32°W	8 Links
9"	White Pine	N24°E	21 Links

Description of corner evidence found:

1957 Brass Cap on 2" iron pipe

5"	Maple	S59°W	29.57 feet
6"	Maple	Due West	25.87 feet

Description of monument and accessories I established to perpetuate the original location of this corner.

Corner in good condition

Set nail in previous Bearing trees

5"	Maple	S59°W	29.57 feet
6"	Maple	Due West	25.87 feet

Set nail in new bearing trees

4"	Maple	N29°W	24.10 feet
4"	Maple	N69°E	8.98 feet

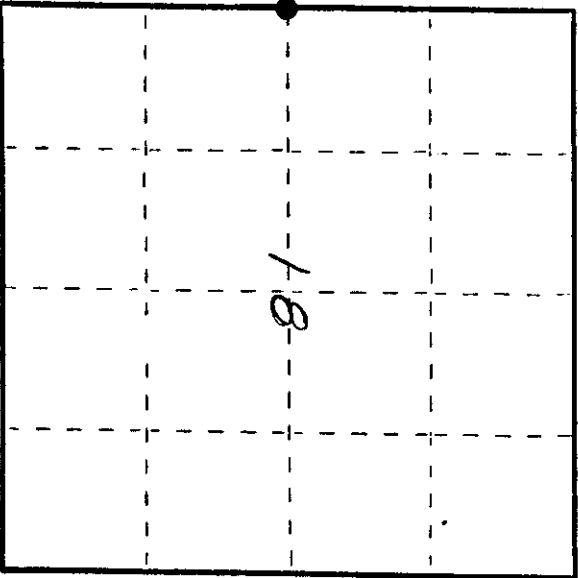
Dated at Minocqua, Wis., this 26th day of August, 1984.

Signature *John H. Fisher* Title Registered Land Surveyor Registration No. S-836
(County Surveyor, Registered Land Surveyor, or other duly authorized official)

Office of Register of Deeds, County of Oneida, I hereby certify that the within instrument was filed in this office for record on the 19th day of August, 1984, at 10:00 o'clock A.M.

(Register of Deeds)

By _____ Deputy



● - Corner monument restored.

3706132000

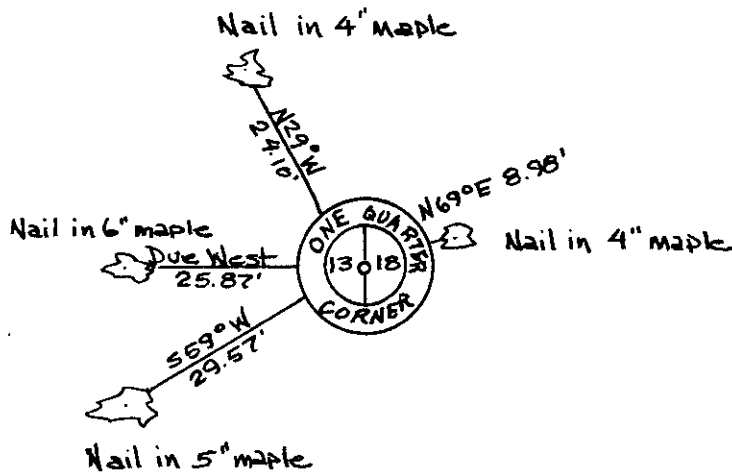
(e) Describe any material discrepancy between the location of the corner as restored or reestablished and the location of that corner as previously restored or reestablished by distance and direction. Show the discrepancy on the plan view drawing under (d), above. Show the distances between the corner as previously restored or reestablished and (1) the corner as restored or reestablished, and (2) to at least 2 of the witness monuments shown on the drawing in (d), above.

See sketch below

(f) Was the corner restored through acceptance of (1) an obliterated evidence location, or, (2) a found perpetuated location?

Found perpetuated location

(g&h) Was the corner reestablished through lost corner proportionate methods? If so, show the method, including the directions and distances to other public land survey corners used as evidence or used for proportioning in determining the corner location?



REGISTER OF DEEDS OFFICE
ONEIDA COUNTY, WIS.
FILED
JUL 1 1986
At 2:00 O'Clock M
DORIS VERAGE KUEHN
REGISTER OF DEEDS

Affix Land Surveyor Seal
WISCONSIN
JOHN H. FISHER
MILWAUKEE
STATE OF WISCONSIN

(i) I, John H. Fisher

(type or print name) certify that the corner location shown on this record was determined by me or under my direction and control and that this U.S. Public Land Survey Monument Record is correct and complete to the best of my knowledge and belief.

John H. Fisher
Signature

8/30/84
Date



Stock No. 26273

U.S. PUBLIC LAND SURVEY MONUMENT RECORD

Index No. L 1

State of Wisconsin }
County of Oneida } ss.

I, John H. Fisher, do hereby certify that on the 6 day of October, 1933, I found evidence of the West one quarter corner of Section 18 Township 37 North, Range 7 East, Fourth Principal Meridian, as described hereon; and that from this evidence I established a new monument and accessories as described hereon to perpetuate the original location of this corner.

Resident witnesses:

None

History of original corner establishment:
The original Government Survey was performed by Alfred Willard, Deputy Surveyor in August, 1860.
Wood post set:

White Pine 9" S32°W 8 lks
White Pine 9" N24°E 21 lks

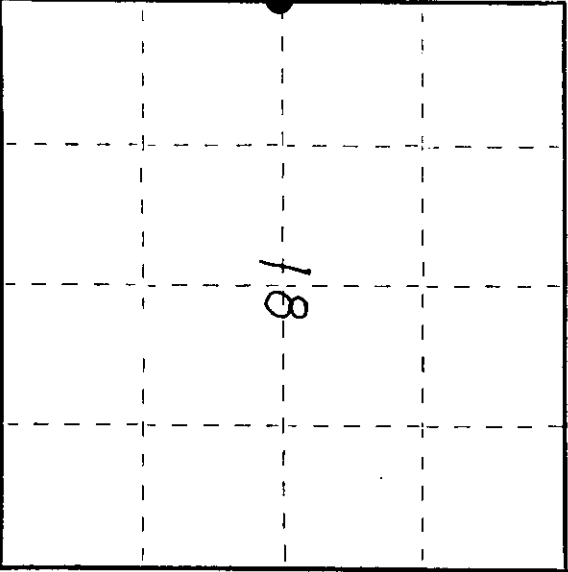
Description of corner evidence found:

2" iron pipe with brass tablet
Maple 5" S59°W 29.57 feet
Maple 6" WEST 25.87 feet

Description of monument and accessories I established to perpetuate the original location of this corner.

Corner in good condition
Set nails in new bearing trees

Maple 4" N29°W 24.10 feet
Maple 4" N69°E 8.98 feet



● = Corner monument restored.

Dated at Minocqua, Wis., this 6th day of May, 1935.

Signature: John H. Fisher, Title Registered Land Surveyor
(County Surveyor, Registered Land Surveyor, or other duly authorized official) Registration No. S-836

Office of Register of Deeds, County of Oneida
Instrument was filed in this office for record on the 11 day of June, 1936
at 1001 o'clock A M.

I hereby certify that the within

By Doris Voss (Register of Deeds)
Ernest D. Pitzer Deputy

3706132000

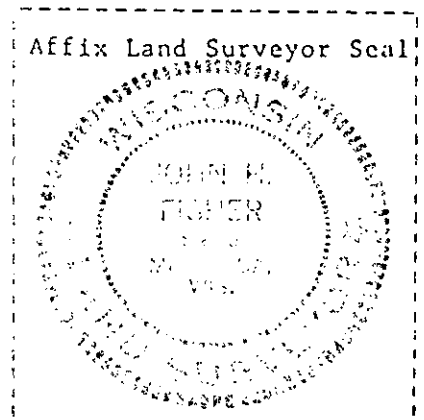
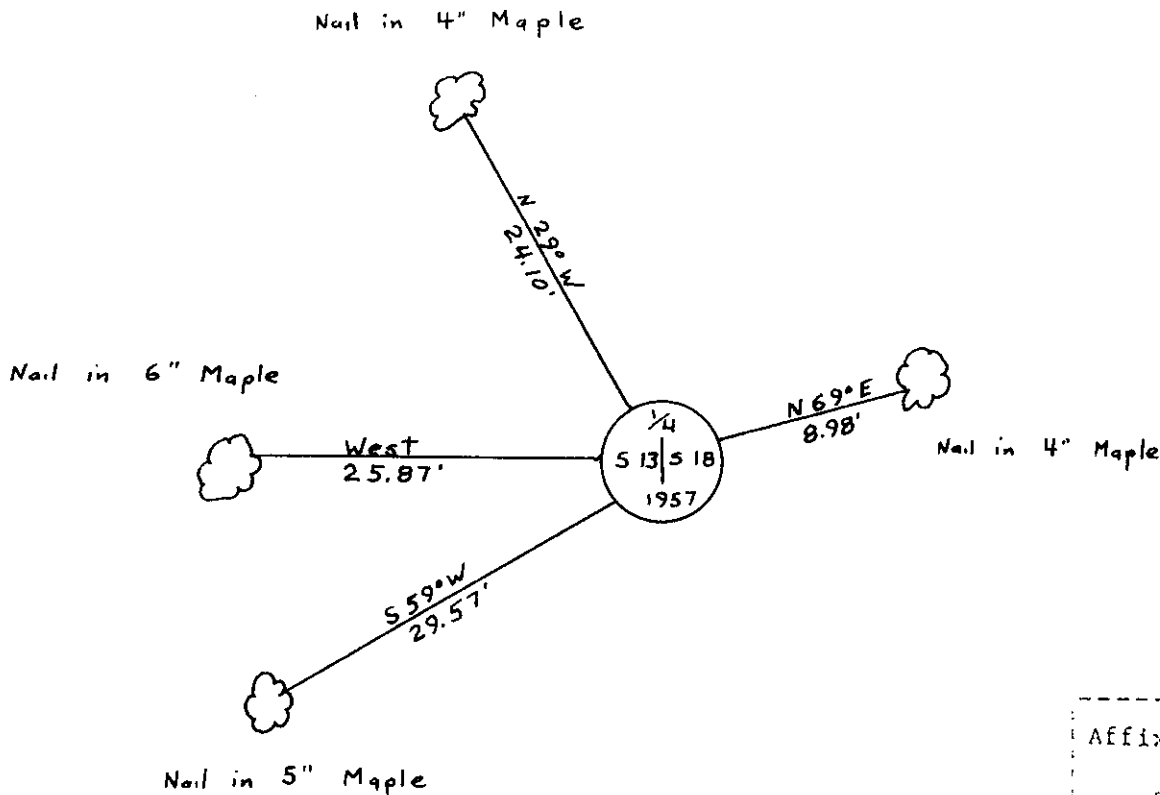
(e) Describe any material discrepancy between the location of the corner as restored or reestablished and the location of that corner as previously restored or reestablished by distance and direction. Show the discrepancy on the plan view drawing under (d), above. Show the distances between the corner as previously restored or reestablished and (1) the corner as restored or reestablished, and (2) to at least 2 of the witness monuments shown on the drawing in (d), above.

See drawing below

(f) Was the corner restored through acceptance of (1) an obliterated evidence location, or, (2) a found perpetuated location?

Found perpetuated location

(g&h) Was the corner reestablished through lost corner proportionate methods? If so, show the method, including the directions and distances to other public land survey corners used as evidence or used for proportioning in determining the corner location?



(i) John H. Fisher
 (type or print name) certify that the corner location shown on this record was determined by me or under my direction and control and that this U.S. Public Land Survey Monument Record is correct and complete to the best of my knowledge and belief.

John H. Fisher
 Signature

5/9/85
 Date