

U.S. PUBLIC LAND SURVEY MONUMENT RECORD

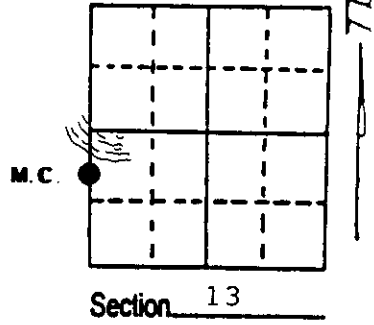
Note: This form is intended and designed to fulfill all requirements of Wisconsin Administrative Code, Chapter A-E 7.08 U.S. Public Land Survey Monument Record (3) (a) (b) (c) (d) (e) (f) (g) (h) (i). An additional sheet may be added if necessary to conform with said requirements.

(a) Corner location: Township 37 North

Range 6 East/West

Town/City/Village Cassian

County Oneida



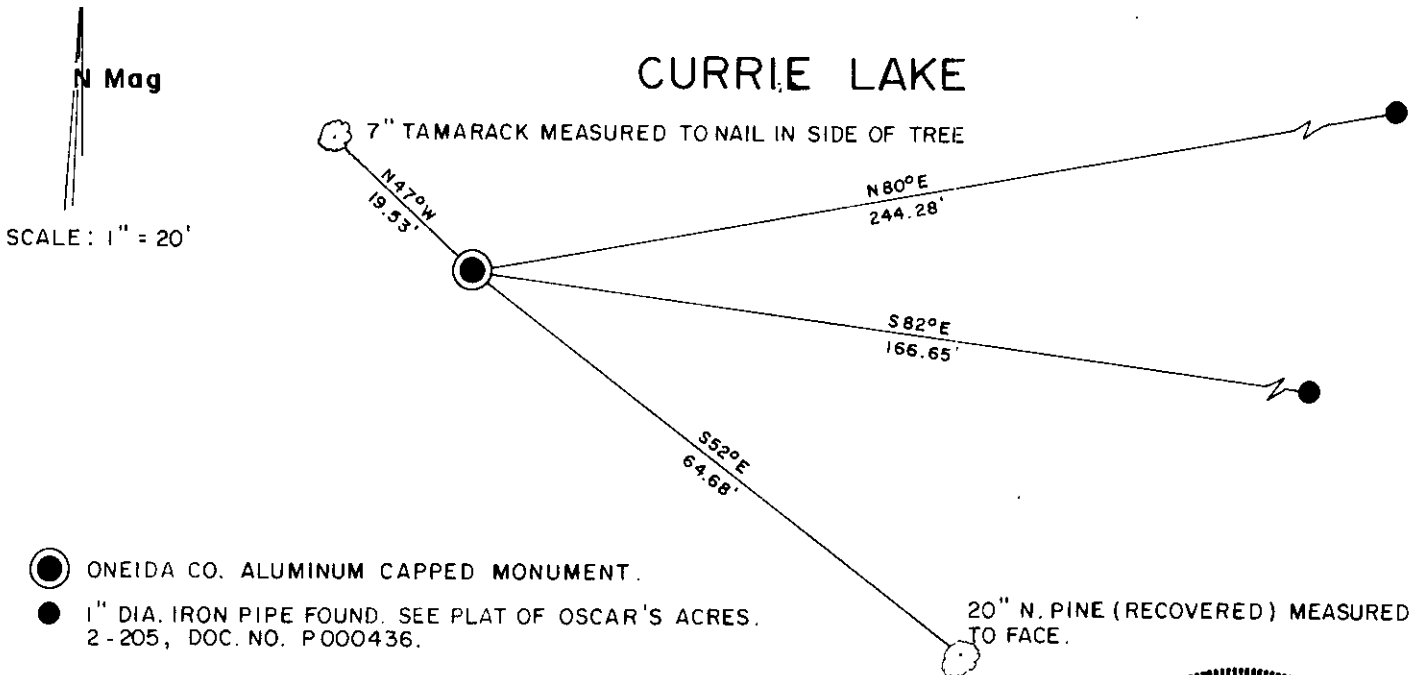
(b) (f) (g) (h) Description of monument found at this corner and if it was accepted, state all evidence (material, testimonial, occupational, plats, records, other monuments) used as a basis for accepting. If not accepted or if nothing was found, state evidence used as basis for establishing location. If reestablished through lost corner proportionate methods, indicate all monuments, distances and directions used to establish. Indicate type of monument found or set and sign post.

1863 - Joseph Jenkins - North between Sections 13 & 14 25.00 ch. set post.
 Original B.T.'s Tamarack 5" S31°E 321ks.
 Spruce 5" N59°W 281ks.

1936 - Maine - Identifies original M.C. on South shore of Currie Lake through original accessories found. Sets new post at position and makes new B.T.'s
 Maine B.T.'s Norway 3½" S52°E .98ch.
 W.Pine 3" N50°W 31 3/4 lks.
 Maine proportions SW Section corner (corner common to Sections 13, 14, 23 & 24). New measurement North between Sections 13 & 14 is 25.92½ ch. to M.C. post set.

2002 - Located Maine's B.T.'s. Norway is now approx. 20" and blaze at base is still visible. W. Pine stump corresponding with (over)

(c) (d) (e) Plan view of corner with ties to at least 4 witness monuments. If in disagreement with previously established corner, show the distances between the two corners and also indicate the ties to the disputed corner.



(i) I, Kip W. Soder R.L.S. #1731
 (type or print name) certify that the corner location on this record was determined by me or under my direction and control and that this U.S. Public Land Survey Monument Record is correct and complete to the best of my knowledge and belief.

Kip W. Soder Signature 2/26/02 Date



Stamp

Index No. 4-111-23

Maine's B.T. found also. Measurements made correspond with measurements recorded by Maine in 1936. Set Oneida County aluminum capped monument and made new B.t.'s. Set plastic sign post.

REGISTER OF DEEDS OFFICE
ONEIDA COUNTY, WIS.
APR 1 1 2002
THOMAS H. SCIGHTON
REGISTER OF DEEDS