

This form is intended to fulfill the requirements of Chapter A-E7.08 (3)(a) thru (i) U.S. Public Land Survey Monument Location Record, Wisconsin Administrative Code. Use the reverse side of form for continuation.

**U.S. PUBLIC LAND SURVEY MONUMENT LOCATION RECORD**

USPLS CORNER: NW SECTION: 23 TOWNSHIP: 37 NORTH RANGE: 6 EAST  
 NAME OF WATERWAY FOR M.C. CORNER : N/A SECTION LINE: N/A  
 (CITY)(VILLAGE)(TOWN) OF: CASSIAN COUNTY OF: ONEIDA

Description of monument found or placed and all other evidence used as the basis for monument location; including monuments and measurements required if the corner location was reestablished by lost corner proportionate methods. Also indicate name of the original surveyor, original survey date and the corner monument, bearing trees, witness or other reference monuments established, including measured bearing and distance ties, from available survey records.

Found and accepted an older PK nail about 18" East of the centerline of existing 30' wide Highway 51/39 pavement at this corner location. Also found an old 5" dia. wood marker post with aluminum section location tag on upper face 37.5 East of corner; I set a standard white poly 'T' marker post along the west side of the old post.

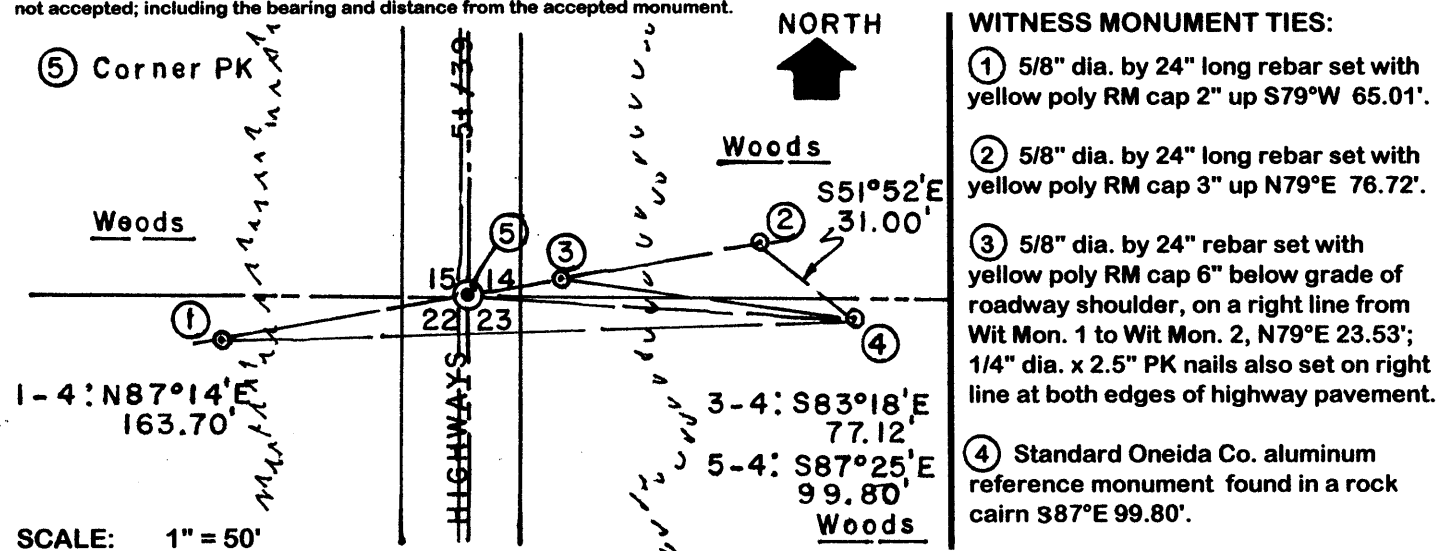
On May 6, 1998 I had also found the PK nail in pavement and an old rusted 1.5" dia. iron pipe in a rock cairn previously set by V.M. Maine as a witness monument 100' East of the NW corner of Section 23 per Oneida County survey records, over which I had driven a standard 2" dia. by 30" long aluminum pipe monument with Oneida County cap that I also stamped as a reference monument to this section corner the same date.

In June-July 1863, Joseph H. Jenkins/GLO set a wood post as the original corner and noted OBTs: an 8" Bw N21°W 30 links and a 10" Aspen S45°E 54 links; all now obliterated.

In April 1998, Russell F. Brown/RLS 2148 notes a PK nail set at this corner per Plat of Survey filed as B-3921 in Oneida County survey records. No other records were researched to further document this corner location.

This corner recovery completed July 19, 2004; there were no direct witnesses other than vehicular drive-bys. This corner also listed as a GPS corner per Oneida County control survey records.

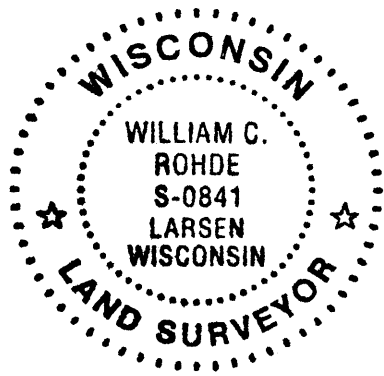
Plan view map of monument location with bearing and distance ties to a minimum of four(4) described witness or reference monuments of concrete, natural stone, iron, live bearing trees or equivalent material. If applicable, also show a minimum of two(2) bearing and distance ties to any other monument found and not accepted; including the bearing and distance from the accepted monument.



SCALE: 1" = 50'

Unless otherwise indicated, all bearing tree ties are to a .25" dia. by 2.5" long PK nail with a 1.25" dia. steel washer driven into unblazed right face and a .25" dia. by 2.5" long PK nail with a 2" dia. steel washer stamped BT is also driven into unblazed face of bearing tree at DBH; the basis for measured bearings is by compass to nearest degree and all tie distances are measured horizontal by steel tape corrected to nearest 1/100th feet at standard temperature of 68° F.

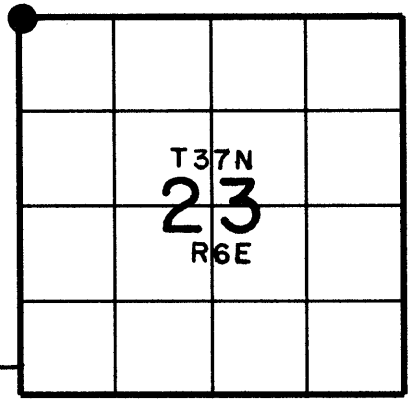
RLS SEAL:



LAND SURVEYOR CERTIFICATE:

I, William C. Rohde, hereby certify that I am duly licensed as a Professional Land Surveyor in the State of Wisconsin; that this USPLS monument location was determined by me and/or under my direct supervision and control; and that this U.S. Public Land Survey Monument Location Record is true and correct to the best of my knowledge and belief.

Signed: *William C. Rohde*  
 William C. Rohde RLS 841

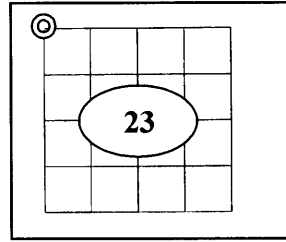


3706150000

## U.S. PUBLIC LAND SURVEY MONUMENT RECORD

Note: This form is intended and designed to fulfill all requirements of Wisconsin Administrative Code Chapter A-E 7.08 (3) (a-i).

(a) Corner: North West  
 Section: 23  
 Township: 37 N.  
 Range: 06 E.  
 Town: Cassian  
 County: Oneida



(b) History of Original Corner

Original Surveyor	Joseph H. Jenkins	Original B.T.'s	
Date of Survey	1863	8" Bw	N21°W 30 links
		10" Aspen	S45°E 54 links

- In 1863 Joseph H. Jenkins /GLO set a wood post as original section corner and made the above ties, all are now obliterated.

(f)(g)(h) Description of monument found at this corner and if it was accepted, state all evidence (material, testimonial, occupational, plats, records, other monuments) used as a basis for establishing location. If reestablished through last corner proportionate methods, indicate all monuments, distances and directions used to establish. Indicate type of monument and signpost found or set.

- In April of 1998, Russell F. Brown/RLS 2148 notes a PK nail set at this corner per Plat of Survey filed as B-3921 in Oneida Co. survey records
- On May 6, 1998 William C. Rohde/RLS 0841 found the PK nail in pavement and an old rusted 1.5" diam. Iron pipe in a rock cairn previously set by V.M. Maine as a witness monument 100' East of the NW corner of Section 23 per Oneida County survey records, over which Rhode had driven a standard 2" diam. By 30" long alum. pipe with Oneida Co. cap that he stamped as a reference mark.
- In September of 2004 William C. Rohde/RLS 0841 found and accepted an older PK nail about 18" East of the centerline of existing Highway 51 pavement. He also found an old 5" diam wood marker post with alum. location tag on upper face 37.5' East. He set a white "T" post along the west side of the old wood post. He set the following witness marks: 5/8" diam. by 24" rebar with a yellow RM cap 2" up S 79°W 65.01'; 5/8" diam. by 24" rebar with a yellow RM cap 3" up N 79°E 76.02'; 5/8" diam. by 24" rebar with a yellow RM cap 6" below grade of highway shoulder N 79°E 23.53'. He also found the standard Oneida Co. alum. monument he had previously set S87°E 99.80'. As located on tie sheet #N-17 (3706150000).
- In summer of 2008 the corner was obliterated due to Highway construction. In Nov. 2008 I (Allen P. Oleink RLS (S-2619) WI D.O.T.) reset a survey nail flush with highway pavement based on record distances on a true line between the found westerly RM and found farthest out north east RM. The distance to the East RM and RM in shoulder checked well. The RM in the shoulder no longer has a cap.

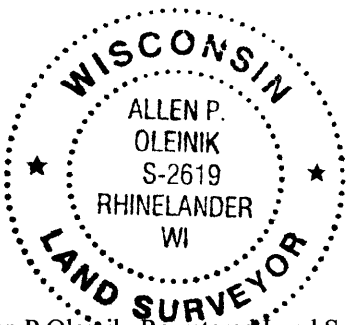
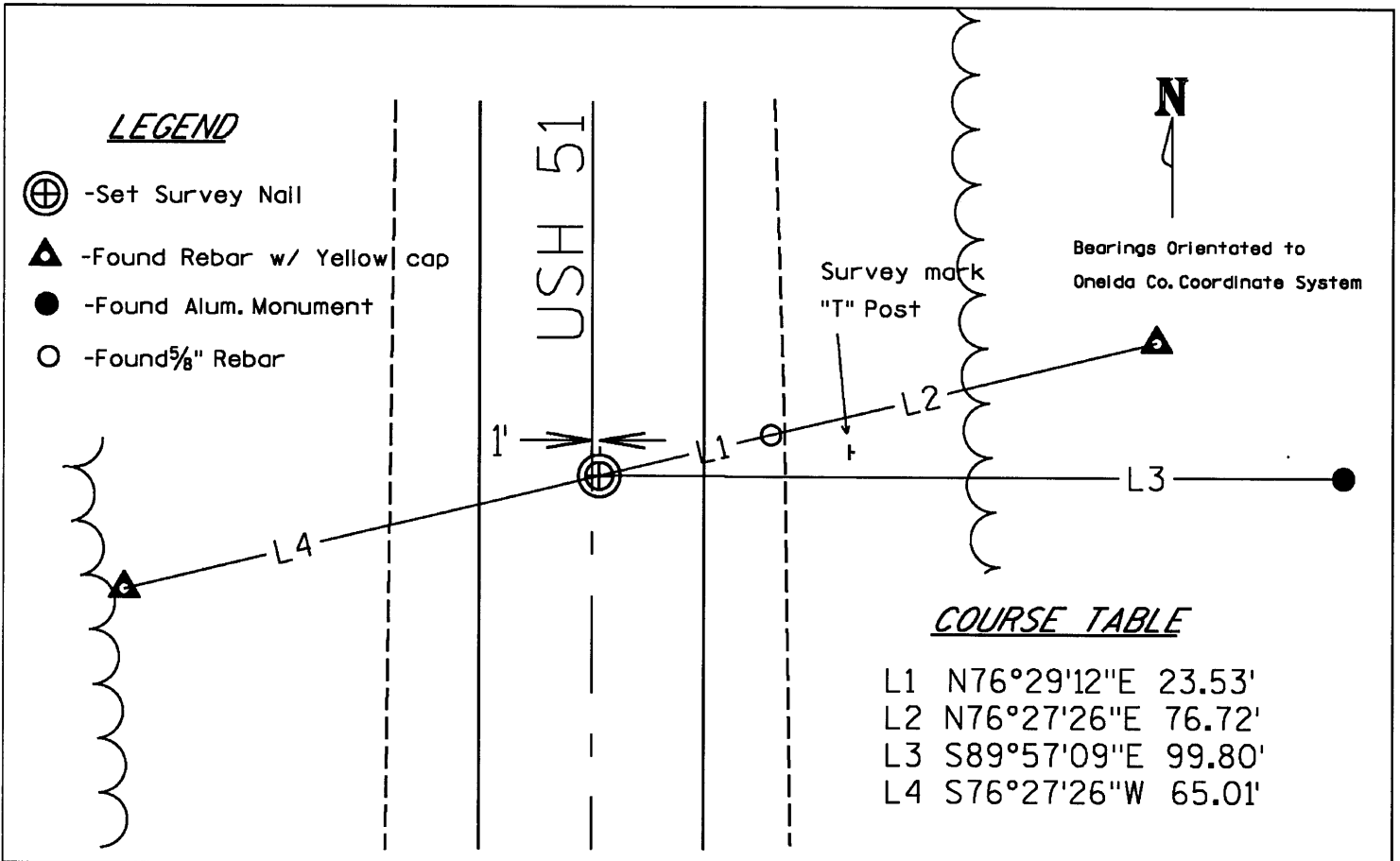
REGISTER OF DEEDS OFFICE  
 ONEIDA COUNTY, WIS.

**FILED**  
 FEB 19 2009

At \_\_\_\_\_ O'Clock \_\_\_\_\_ M  
**THOMAS H. LEIGHTON**  
 REGISTER OF DEEDS

3706150000

(c)(d)(e) Plan view of corner with ties to at least 4 witnesses. If in disagreement with previously established corner, show the distance between the two corners and also indicate the tie to the disputed corner.



(i) I, Allen P. Oleinik, Registered Land Surveyor No 2619, hereby Certify that the corner location on this record was referenced by me And that this U.S. Public Land Survey Monument Record is correct and complete to the best of my knowledge and belief.

*Allen P. Oleinik*      2-17-09

Signature

Date

Index No. N-17

3706150000

AUG 28 2017

AT            O'CLOCK            M  
KYLE J. FRANSON  
REGISTER OF DEEDS

### U.S. PUBLIC LAND SURVEY MONUMENT RECORD ONEIDA COUNTY



Land Surveying  
Landscape Architecture  
Engineering  
Jordan G. Brost, RLS #3009  
5709 Windy Drive, Suite D  
Stevens Point, WI 54482  
715.344.9999(Ph) 715.344.9922(Fx)

TYPE OF MONUMENT: BERNTSEN NAIL

ONEIDA COUNTY COORDINATES: N: 183267.742

E: 186533.626

ELEVATION: -M.S.L. DATUM

ELLIP. HEIGHT:                                 

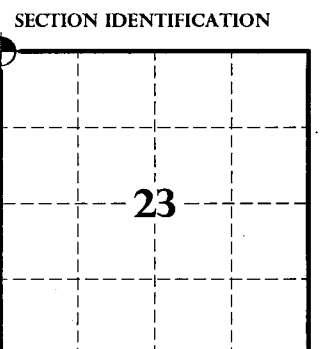
LATITUDE:                                 

LONGITUDE:                                 

- FOUND
- SET
- RE-SET
- RE-TIED
- ORDER OF ACCURACY:
- FIRST
- SECOND
- THIRD         X
- FOURTH
- UNKNOWN
- OTHER

REFERENCE DATUM: NAD 83 (1991)

CORNER NO.                                   
STATION NAME                                   
SECTION                                 23                                  
TOWNSHIP                                 37                                 NORTH  
RANGE                                 6                                 EAST



#### BASIS FOR MONUMENT LOCATION:

SHOW INFO SUCH AS: HISTORY OF MONUMENT, DATES, SURVEYOR, EXACT DESCRIPTION OF MONUMENT, METHOD AND EQUIPMENT USED, PROJECT NAME, AZIMUTH MARK AND ANGLE, ETC. (USE REVERSE SIDE IF NECESSARY)

1863 - JOSEPH H. JENKINS/GLO SET A WOOD POST AS THE ORIGINAL SECTION CORNER  
 APRIL 1998 - RUSSEL F. BROWN, PLS # 2148, SET A P.K. NAIL PER PLAT OF SURVEY FILED AS B-3921  
 MAY 6, 1998 - WILLIAM C. ROHDE, PLS # 0841, FOUND A PK NAIL AT CORNER LOCATION. HE SET A 2" ALUM. REFERENCE MONUMENT OVER AN EXISTING 1.5" IRON PIPE SET BY W.M. MAINE (100' EAST OF CORNER )  
 SEPT. 4, 2004 - WILLIAM C. ROHDE, PLS # 0841, FOUND A PK NAIL AT CORNER LOCATION AND SET 3 ADDITIONAL WITNESS CORNER MONUMENTS. (SEE PREVIOUS TIE SHEET )  
 JAN. 2007- JEFFERY D. ANDERSON, PLS # 2697, FOUND A PK NAIL AS SHOWN ON PLAT OF SURVEY, MAP # C2363.  
 NOV. 2008 - ALLEN P. OLEINK, PLS #2619, RESET A SURVEY NAIL AT THE CORNER LOCATION AFTER HIGHWAY CONSTRUCTION, SEE PREVIOUS TIE SHEET DATED FEB. 17, 2009.  
 03-11-2014 - I FOUND BERNTSEN SURVEY NAIL AT CORNER LOCATION AS SHOWN ON PREVIOUS TIE SHEET BY ALLEN P. OLEINIK, DATED FEB. 17, 2009. I CHECKED EXISTING WITNESS CORNERS AS SHOWN ON PREVIOUS TIE SHEET, AND THEY ALL FIT VERY WELL. ACCEPTED THE CORNER LOCATION AS BEST AVAILABLE EVIDENCE. THE CORNER WAS LOCATED BY GPS OBSERVATIONS PRIOR TO RECONSTRUCTION OF U.S.H. "51".  
 07-05-2017 - AFTER CONSTRUCTION WAS COMPLETE, THE CORNER LOCATION WAS OBLITERATED. I RESET BERNTSEN NAIL AT THE CORNER LOCATION AS PREVIOUSLY ESTABLISHED USING GPS OBSERVATIONS. I FOUND ONE EXISTING WITNESS CORNER IN GOOD CONDITION AS SHOWN ON PREVIOUS TIE SHEET AND SET 3 ADDITIONAL WITNESS CORNERS AS SHOWN BELOW TO COMPLY WITH AE-7 WISCONSIN ADMINISTRATIVE CODE. CORNER LOCATION FALLS IN CENTERLINE OF U.S.H. "51"



DATA SHOWN HERE IS CERTIFIED CORRECT:

*[Signature]*  
PROFESSIONAL LAND SURVEYOR

DATE AUG. 14, 2017

#### TIE SKETCH: (SHOW TIES, FENCE LINES, ROADS, SIZE AND TYPE OF WITNESS TREES)

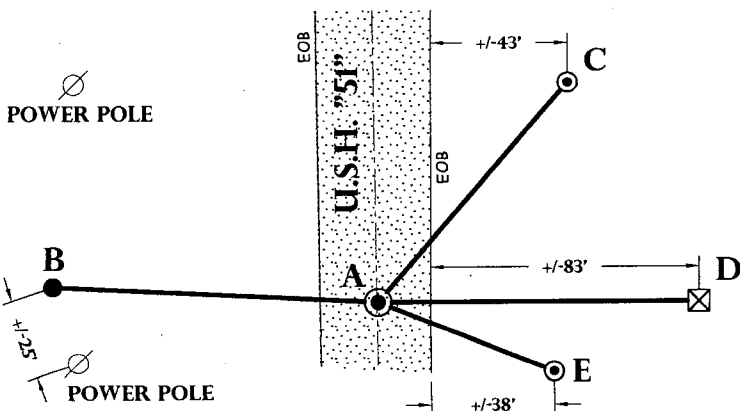
#### LEGEND AND NOTES:

- BERNSTEIN MONUMENT RESET
- 1" O.D. X 24" IRON REBAR SET
- 3/4" O.D. IRON BAR FOUND W/DOT CAP
- ☒ ALUMINUM MONUMENT FOUND



AB = N 87°08'48" W 101.51'  
 AC = N 40°47'16" E 90.34'  
 AD = S 89°59'15" E 99.82' (99.80')  
 AE = S 68°14'26" E 58.99'

COORDINATES ARE REFERENCED TO THE ONEIDA COUNTY COORDINATE SYSTEM AS DEVELOPED BY THE WISCONSIN DEPARTMENT OF TRANSPORTATION AND WERE DETERMINED BY GPS OBSERVATIONS ON CONTROL POINTS AS SUPPLIED BY ONEIDA COUNTY. NAD83 (1991)



TRAVIS OLDS  
DRAWN BY

3706156000

217