

Stock No. 26273

U. S. PUBLIC LAND SURVEY MONUMENT RECORD

INSTRUCTIONS: This record shall show the location of the corner and shall include all of the following nine elements (a through i).

(a) Identify the corner by reference to the U.S. public land survey system.

RECORD INFORMATION

June, 1863 - J. H. Jenkins, U. S. Deputy Surveyor set 1/4 Section post, witnessed by the following bearing trees:

- 4" Pine 7" S25°W, 36 links
- Blk Pine 10" N9°W, 26 links

October 23, 1936, V. S. Maine, Oneida County Surveyor found point of original stake identified by stumps of original bearing trees. Set official corner and marked BT's.

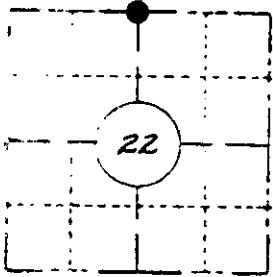
- Y.P. stump 10" S14°E, .32 chains
- W.P. stump 12" N18°W, .49-3/4 chains

Compared with all record data & accepted as correct.

Robert H. Kinnick

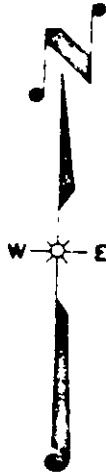
Oneida County Surveyor 27 Apr 1983

Section 22
T37N R6E



LOCATION SKETCH

Location of landmark indicated by "•"



(b) Describe any record evidence, monument evidence, occupational evidence, testimonial evidence, any other material evidence you considered, and whether the monument was found or placed.

December 8th, 1982

Found a 2-3/8" Outside diameter iron pipe extending 24 inches above ground with a brass cap marked "T37 R6 1/4 S15 S22 1937". An old scribed 5" square wood post stands adjacent to pipe.

The corner is located in a +/- 10 year old slash 32 feet north of a logging road.

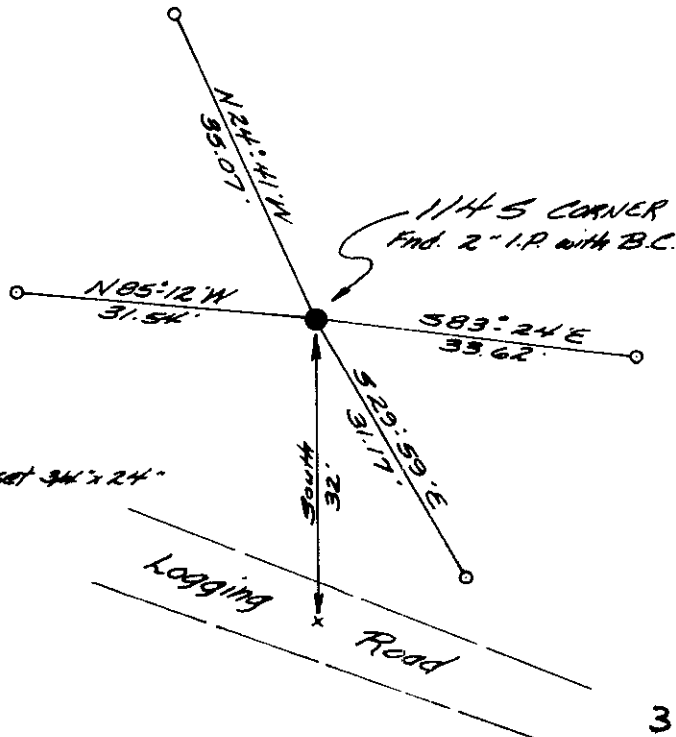
In the plan view drawing below, provide reference ties to at least 4 witness monuments, or if the location is within a municipality, to at least 2 witness monuments. (Witness monuments shall be made of concrete, natural stone, iron or other equally durable material, Describe witness monuments.

Show a plan view drawing depicting the relevant monuments and reference ties which is sufficient in detail to enable accurate relocation of the corner monument if the corner monument is disturbed. Indicate north.

Bearings true, based on solar



Scale 1" = 20'



N-15

3706150020

