

# U.S. PUBLIC LAND SURVEY MONUMENT LOCATION RECORD

Recorders Data

CORNER: West 1/4 SECTION: 14 TOWNSHIP 37 NORTH RANGE 6 EAST/WEST

FOR M.C. CORNER INDICATE: NAME OF WATERWAY N/A SECTION LINE N/A

~~(CITY)(VILLAGE)(TOWN)~~ OF: Cassian COUNTY OF: Oneida

Note: See reverse side for establishment traverse data required.

Description of monument found or placed and all other evidence used as a basis for monument location; including all monuments and related measurements required if the corner location is reestablished by lost corner proportionate methods. Also indicate name of original surveyor, survey date, corner monument set and established bearing trees, witness or reference monuments with ties from available records.

This corner reestablished midway on a right line between opposite section corners as no evidence of record recovered within highway roadway cut/fill area.

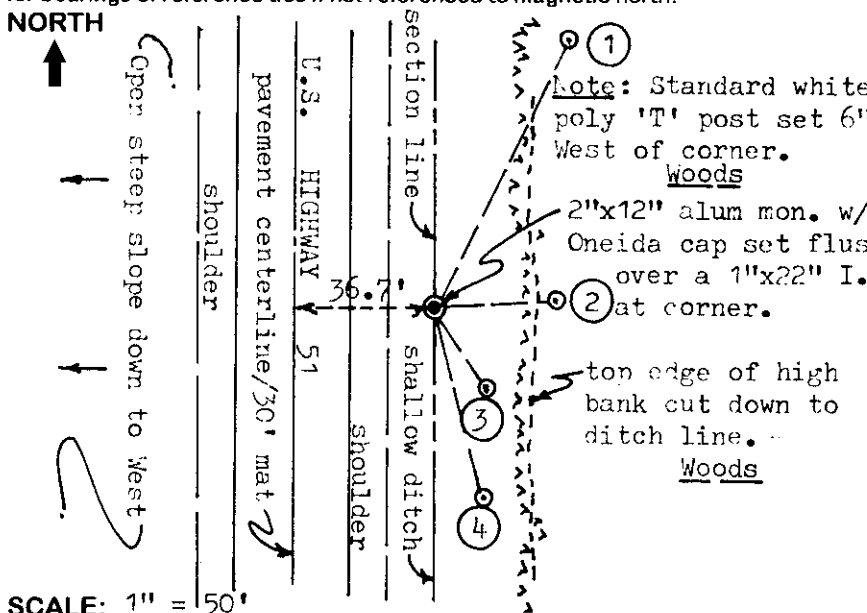
In 1863, Jenkins/GLC set a wood post as the 1/4 corner and marked OBTs, an 8" Bw N21°W 30 links and a 10" Aspen S45°E 54 links, all of which are now obliterated within highway corridor.

In 1959, Kowalke noted a monument symbol at this corner on a right line between opposite section corners he also apparantly found, at 2751' North of SW corner of Section 14 and at 2750' South of NW corner of Section 14, per his Plat of Survey print on file at Foltz & Associates, Inc. Minocqua, Wisconsin.

Owens-Illinois/1961 & 1972 surveys, drafted by W. Stuth in 1986 on a map of Section 14 filed in Oneida Co. records, indicates a monument symbol "By others" at this corner with a 'WC' notation nearby East of the corner to denote a witness corner; noted distances on the map indicate that the corner is midway on a right line between opposite section corners by retracement survey.

In 1989, a revised Wisconsin Department of Transportation right-of-way plat and related field notes also indicate that this corner is midway on a right line between opposite section corners. This recovery completed June 29, 1998; there were no witnesses.

Plan view map of monument location with bearing and distance ties to a minimum of four(4) described witness or reference monuments of concrete, natural stone, iron, live bearing trees or equivalent material. If applicable, also show a minimum of two(2) bearing and distance ties to any other monument found and not accepted; including the bearing and distance from the accepted monument. Indicate the basis for bearings of reference ties if not referenced to magnetic north.



Unless otherwise indicated, all bearing tree ties are to a .25" dia. by 2.5" long PK nail with a 1.25" dia. steel washer driven into unblazed right face and a .25" dia. by 2.5" long PK nail with a 2" dia. steel washer stamped 'BT' is also driven into unblazed face of bearing tree at DBH; the basis for measured bearings is magnetic to nearest degree and all tie distances are horizontal measure to nearest 1/100th feet.

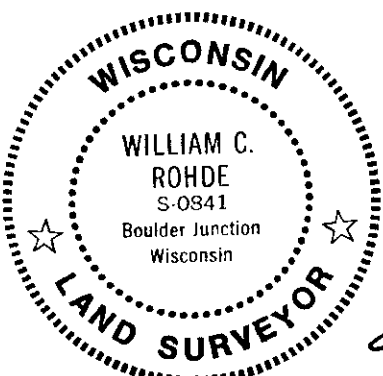
### LAND SURVEYOR CERTIFICATION:

I, William C. Rohde, hereby certify that I am a duly licensed Professional Land Surveyor in Wisconsin, that this USPLS monument location was determined by me or under my direction and control, and that this U.S. Public Land Survey Monument Location Record is true and correct to the best of my knowledge and belief.

*William C. Rohde* Date: 7-13-98  
Signature

	1	4	

INDEX NO.



RLS SEAL

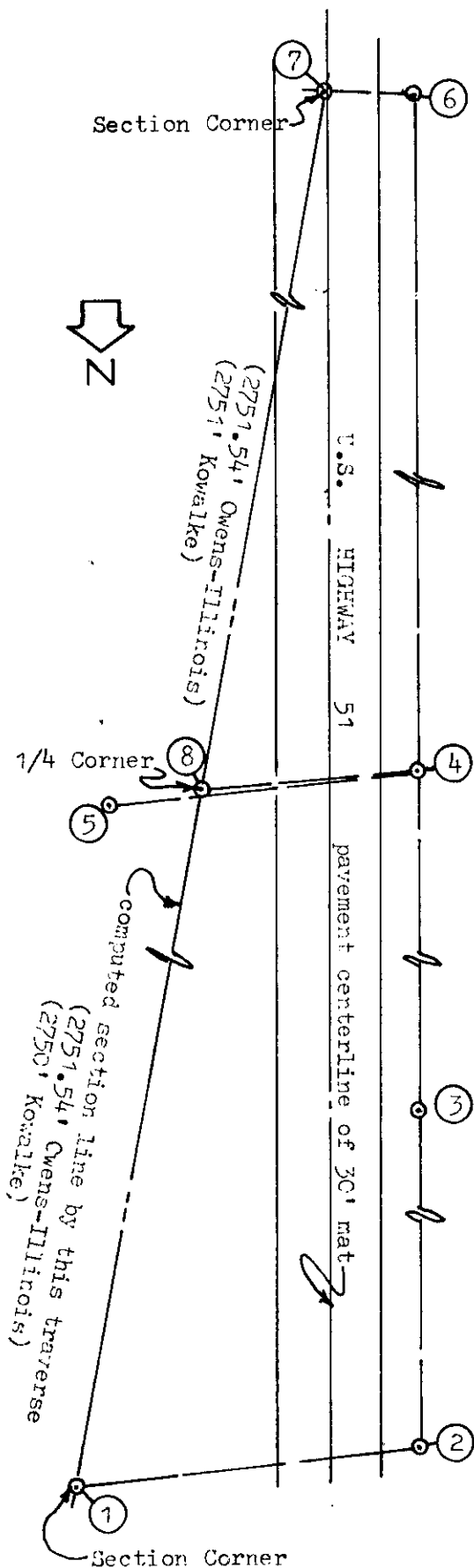
SHEET NO. 1 OF 1

This form is intended to fulfill requirements of Chapter A-E 7.08 (3)(a)(b)(c)(d)(e)(f)(g)(h)(i) U.S. Public Land Survey Monument Location Record, Wisconsin Administrative Code. Use reverse side for geodetic location data and/or continuation purposes.

SECTION LOCATION MAP

INDEX NO. L 17  
3706 15 20 00

ESTABLISHMENT TRAVERSE DATA FOR SETTING WEST 1/4 CORNER OF SECTION 14, TOWNSHIP 37 NORTH RANGE 6 EAST MIDWAY ON A RIGHT LINE BETWEEN OPPOSITE SECTION CORNERS:



ESTABLISHMENT AUTHORITY:

§.59.62 Wisconsin Revised Statutes

TABLE OF TRAVERSE STATIONS:

- ① 2" Dia. brass capped iron pipe found at NW Corner of Section 14 per Oneida County records.
- ② 60d spike set at west edge of highway shoulder.
- ③ 60d spike set at west edge of highway shoulder.
- ④ 60d spike set at west edge of highway shoulder.
- ⑤ See Witness No. 2 on reverse side.
- ⑥ 60d spike set on west edge of highway shoulder.
- ⑦ FK spike found 1.6' East of highway pavement centerline at SW Corner of Section 14, to be referenced by Genisot & Associates, Inc. per Oneida County Surveyor.
- ⑧ See reverse for monument established at the West 1/4 Corner of Section 14 by this traverse.

TABLE OF TRAVERSE COURSES:

Course	Bearing	Distance
1-2	West	102.24'
2-3	S06°21'41"W	1523.44'
3-4	S06°32'03"W	1220.97'
4-5	S89°07'57"E	92.46'
4-6	S06°33'16"W	2744.20'
6-7	S80°22'20"E	26.15'
4-8	S88°20'40"E	61.29'

TABLE OF COMPUTED COURSES:

Course	Bearing	Distance
1-8	S07°16'56"W	2751.06'
8-7	S07°16'56"W	2751.06'
4-8	S88°20'40"E	61.29'

REMARKS:

All traverse angles and distances measured with a Topcon ET-1 Total Station instrument by tripod and tribrach forced centering method, operated by RLS 841 William C. Rohde on June 29, 1998. All traverse computations by computer coordinate geometry program; there were no assistants or witnesses other than by vehicular drive-bys.

Traverse course 1-2 assigned an assumed bearing of West as the basis for all traverse course bearings.

SCALE: 1" = 50'

Drafted By: William C. Rohde, RLS 841  
Wisconsin Land Surveyor

REGISTER OF DEEDS OFFICE  
ONEIDA COUNTY, WIS.

**FILED**

AUG 20 1998

At O'Clark  
THOMAS H. LEITCHER  
REGISTER OF DEEDS

AUG 28 2017

AT 0 O'CLOCK M  
KYLE J. FRANSON  
REGISTER OF DEEDS

**U.S. PUBLIC LAND SURVEY MONUMENT RECORD**  
**ONEIDA COUNTY**



Land Surveying  
Landscape Architecture  
Engineering  
Jordan G. Brost, RLS #3009  
5709 Windy Drive, Suite D  
Stevens Point, WI 54481  
715.344.9999(Ph) 715.344.9922(Fx)

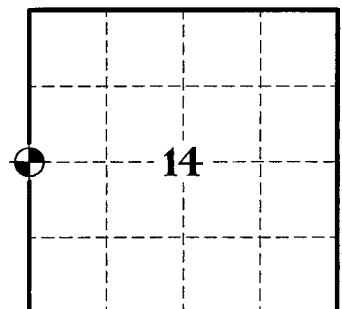
TYPE OF MONUMENT: 1" O.D. X 36" IRON REBAR  
ONEIDA COUNTY COORDINATES: N: 186018.912  
E: 186525.656  
ELEVATION: -M.S.L. DATUM  
ELLIP. HEIGHT: \_\_\_\_\_  
LATITUDE: \_\_\_\_\_  
LONGITUDE: \_\_\_\_\_

- FOUND
- SET
- RE-SET
- RE-TIED

ORDER OF ACCURACY: \_\_\_\_\_  
FIRST \_\_\_\_\_  
SECOND \_\_\_\_\_  
THIRD X  
FOURTH \_\_\_\_\_  
UNKNOWN \_\_\_\_\_  
OTHER \_\_\_\_\_  
REFERENCE DATUM: NAD 83 (1991)

CORNER NO. \_\_\_\_\_  
STATION NAME \_\_\_\_\_  
SECTION 14  
TOWNSHIP 37 NORTH  
RANGE 6 EAST

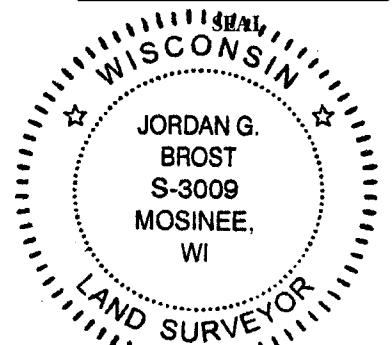
SECTION IDENTIFICATION



**BASIS FOR MONUMENT LOCATION:**

SHOW INFO SUCH AS: HISTORY OF MONUMENT, DATES, SURVEYOR, EXACT DESCRIPTION OF MONUMENT, METHOD AND EQUIPMENT USED, PROJECT NAME, AZIMUTH MARK AND ANGLE, ETC. (USE REVERSE SIDE IF NECESSARY)

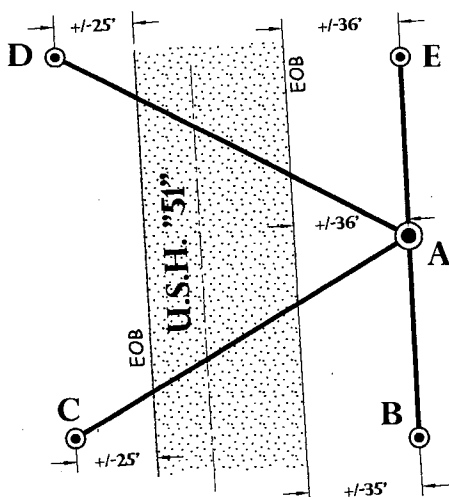
- 1863 - JOSEPH H. JENKINS / GLO SET A WOOD POST AS THE ORIGINAL 1/4 CORNER
- 1959 - KOWALKE NOTED A MONUMENT SHOWN ON HIS PLAT OF SURVEY ( FOLTZ & ASSOCIATES, INC , MINOCQUA, WI ), MAP # C2182.
- 1986 - OWENS-ILLINOIS INDICATES MONUMENT SYMBOL AT MIDWAY BETWEEN OPPOSITE SECTION CORNERS.
- 1998- WILLIAM C. ROHDE, PLS # 0841, SET A 2" A 12" ALUMINUM MONUMENT OVER 1" IRON PIPE. HE FOUND 1 EXISTING WITNESS AND REPLACED WITH AN ALUMINUM MONUMENT AND SET 3 ADDITIONAL WITNESS CORNERS AS SHOWN ON PREVIOUS TIE SHEET.
- 1-23-2007 - JEFFREY D. ANDERSON, PLS # 2697, FOUND AN ONEIDA COUNTY ALUMINUM MONUMENT AS SHOWN ON PLAT OF SURVEY, MAP # C2363.
- 3-11-2014- FOUND ALUMINUM MONUMENT AT CORNER LOCATION AS SHOWN ON PREVIOUS TIE SHEET AND ACCEPTED AS BEST AVAILABLE EVIDENCE. THE CORNER WAS LOCATED BY GPS OBSERVATIONS PRIOR TO THE RECONSTRUCTION OF U.S.H. "51".
- 7-05-2017- AFTER CONSTRUCTION WAS COMPLETED, ALL EVIDENCE OF CORNER WAS OBLITERATED. I SET A 1" O.D. X 36" IRON REBAR AT THE CORNER LOCATION AS PREVIOUSLY ESTABLISHED USING GPS OBSERVATIONS AND SET 4 ADDITIONAL WITNESS CORNERS AS SHOWN BELOW TO COMPLY WITH AE-7 WISCONSIN ADMINISTRATIVE CODE.



DATA SHOWN HERE IS CERTIFIED CORRECT:

*Jordan G. Brost*  
PROFESSIONAL LAND SURVEYOR  
AUG. 14, 2017  
DATE

**TIE SKETCH:** (SHOW TIES, FENCE LINES, ROADS, SIZE AND TYPE OF WITNESS TREES.)



**LEGEND AND NOTES:**

- ⊙ 1" O.D. X 36" IRON REBAR SET
- ⊙ 1" O.D. X 24" O.D. IRON REBAR SET

AB = S 02°43'23" E 63.23'  
AC = S 58°46'51" W 121.35'  
AD = N 62°33'33" W 123.80'  
AE = N 02°32'04" W 56.96'

COORDINATES ARE REFERENCED TO THE ONEIDA COUNTY COORDINATE SYSTEM AS DEVELOPED BY THE WISCONSIN DEPARTMENT OF TRANSPORTATION AND WERE DETERMINED BY GPS OBSERVATIONS ON CONTROL POINTS AS SUPPLIED BY ONEIDA COUNTY. NAD 83 (1991)

TRAVIS OLDS  
DRAWN BY

3706152000