

Stock No. 26273

U. S. PUBLIC LAND SURVEY MONUMENT RECORD

INSTRUCTIONS: This record shall show the location of the corner and shall include all of the following nine elements (a through i).

a) Identify the corner by reference to the U.S. public land survey system.

RECORD INFORMATION

June, 1863 - J. H. Jenkins, U.S. Deputy Surveyor, set post for corner to Section 15, 16, 21 and 22, witnessed by the following bearing trees:

- White Pine 8" N15°E, 10 links
- Aspen 10" N85°E, 20 links

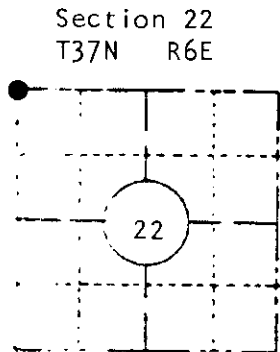
October 27th, 1936 - V. H. Maine, Oneida County Surveyor found no evidence of the original corner. Set Official Corner by double proportionate measurement and marked B.T.

White Pine 7" N37°E, .18-1/2 chains

Compared with all record data & accepted as correct.

Robert H. Kniel

Oneida County Surveyor 27 Apr 1983



LOCATION SKETCH

Location of landmark indicated by "●"

b) Describe any record evidence, monument evidence, occupational evidence, testimonial evidence, any other material evidence you considered, and whether the monument was found or placed

December 13th, 1982

Found a 2-3/8 inch outside diameter iron pipe extending 18 inches above ground with a brass cap marked "T37 R6 S15 S16 S21 S22 V.M.1937" Several stones are piled around pipe.

The corner is located in a +/- 10 year old slash.

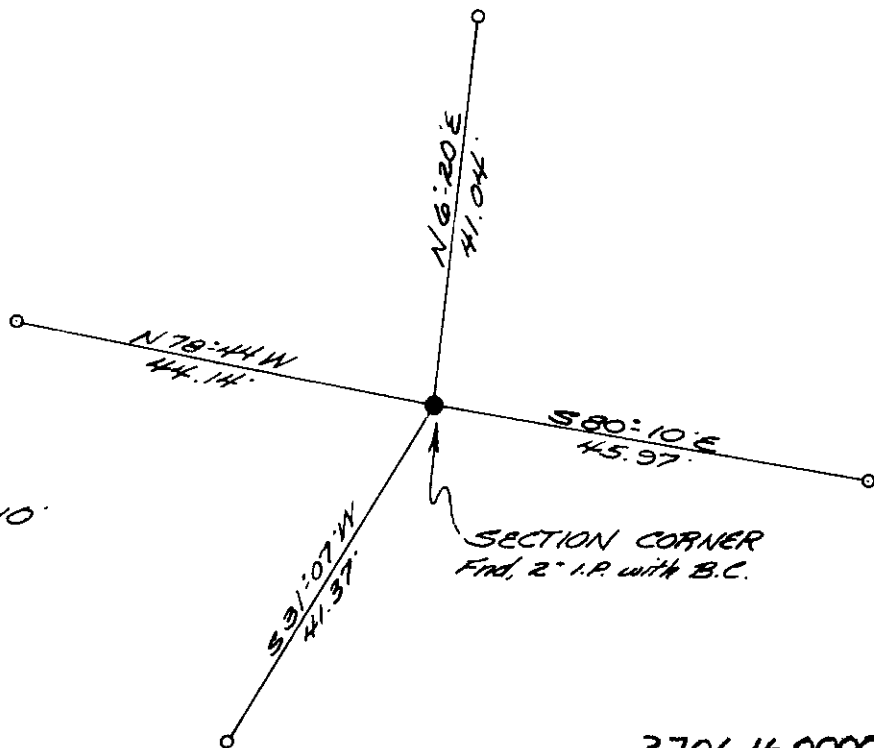
In the plan view drawing below, provide reference ties to at least 4 witness monuments, if the location is within a municipality, to at least 2 witness monuments. Witness monuments shall be made of concrete, natural stone, iron or other equally durable material, Describe witness monuments.

c) Show a plan view drawing depicting the relevant monuments and reference ties which is sufficient in detail to enable accurate relocation of the corner monument if the corner monument is disturbed. Indicate north.

Bearings True based on solar



Scale 1" = 10'



SECTION CORNER
Fnd. 2" I.P. with B.C.

o = Iron pipe set, 94 x 24'

3706160000

N-13

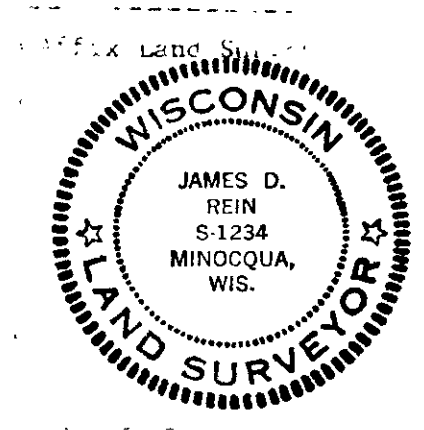
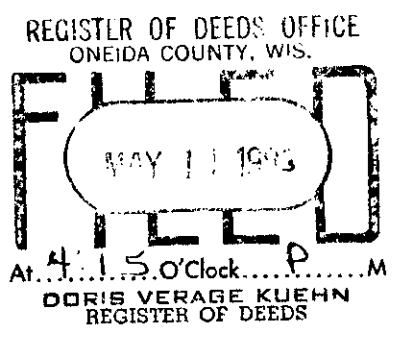
4.) Describe any material discrepancy between the location of the corner as restored or reestablished and the location of that corner as previously restored or reestablished by distance and direction. Show the discrepancy on the plan view drawing under (d) above. Show the distances between the corner as previously restored or reestablished and (1) the corner as restored or reestablished and (2) to at least 2 of the witness monuments shown on the drawing in (d), above.

5.) Was the corner restored through acceptance of (1) an obliterated evidence location, or, (2) a found perpetuated location?

The corner position was restored by acceptance of a found monumented corner location as re-established by V. M. Maine.

6.) Was the corner reestablished through lost corner proportionate methods? If so, show the method, including the directions and distance, to other public land survey corners used as evidence or used for proportioning in determining the corner location?

No



7.) JAMES D. REIN, Registered Land Surveyor No. S-1234 (type or print name) certify that the corner location of this record was determined by me or under my direction, that this U.S. Public Land Survey was conducted and completed to the best of my knowledge and belief.

James D. Rein

December 29th, 1982