

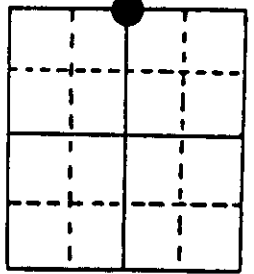
# U.S. PUBLIC LAND SURVEY MONUMENT RECORD

Note: This form is intended and designed to fulfill all requirements of Wisconsin Administrative Code, Chapter A-E 7.08 U.S. Public Land Survey Monument Record (3) (a) (b) (c) (d) (e) (f) (g) (h) (i). An additional sheet may be added if necessary to conform with said requirements.

(a) Corner location: Township 37 North  
 Range 6 East/West

Town/City/Village Cassian

County Oneida



Section 19

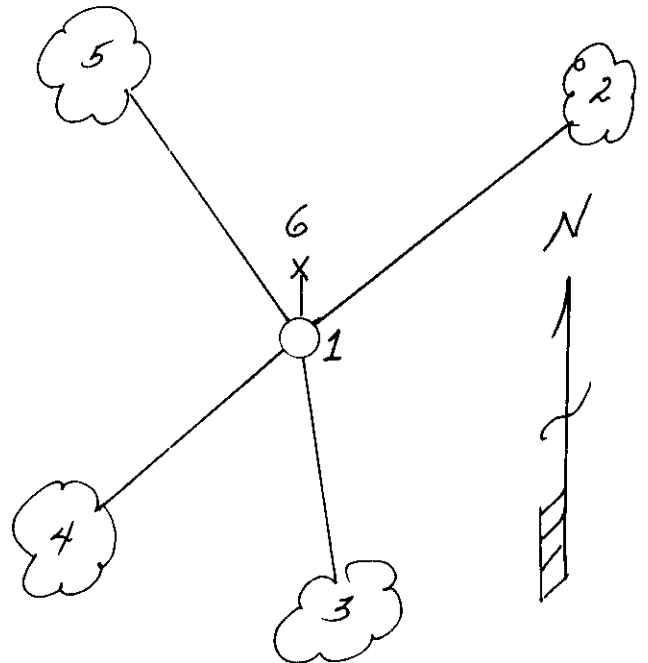
(b) (f) (g) (h) Description of monument found at this corner and if it was accepted, state all evidence (material, testimonial, occupational, plats, records, other monuments) used as a basis for accepting. If not accepted or if nothing was found, state evidence used as basis for establishing location. If reestablished through lost corner proportionate methods, indicate all monuments, distances and directions used to establish. Indicate type of monument found or set and sign post.

- 1863 - Joseph H. Jenkins established this corner and set a wood post at 35.4 chains with 2 BTs:  
 6" Spruce, N14°W, 25 Links (16.5')    8" Tamarack, S73°W, 28 Links (18.48')
- 11/5/1936 - Vern Maine found original stake and Tamarack BT. He set a 9" x 9" Cedar post with 3 BTs:  
 12" Cedar, N22°E, 97½ Links (64.35')  
 6" Cedar, N34°E, 68 ¾ Links (45.375')  
 5" Spruce Stump, S8°W, 28 ¾ Links (18.975')
- 1/4/1937 - Maine returned and replaced Cedar post/official monument, a 2" x 60" iron pipe with Brass Cap.
- 10/25/1995 - Milo E. Stefan found Maine's monument and Cedar post (fallen); Spruce stump gone; Cedar BTs are stumps - both being cut many years ago.  
 We made new BTs and placed plastic sign post.

(c) (d) (e) Plan view of corner with ties to at least 4 witness monuments. If in disagreement with previously established corner, show the distances between the two corners and also indicate the ties to the disputed corner.

- 1) 2" x 60" Iron Pipe/Brass Cap.
- 2) 8" Black Spruce, N56°E, 41.93'
- 3) 8" Tamarack, S8°E, 22.79'
- 4) 6" Black Spruce, S50°W, 19.86'
- 5) 7" Black Spruce, N42°W, 20.06'
- 6) Plastic Sign Post, North, .6'

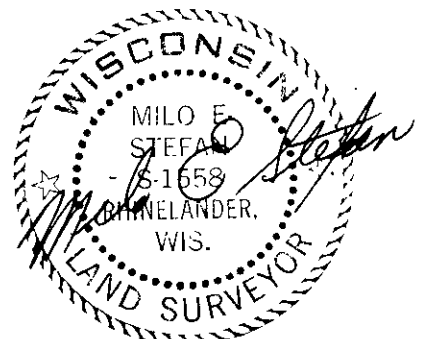
Distances to nail in side of BTs.  
 Stump blazes scribed "BT".  
 BT tags placed on each BT.



(i) I, Milo E. Stefan  
 (type or print name) certify that the corner location on this record was determined by me or under my direction and control and that this U.S. Public Land Survey Monument Record is correct and complete to the best of my knowledge and belief.

Milo E. Stefan  
 Signature

December 17, 1995  
 Date



Index No. N-3

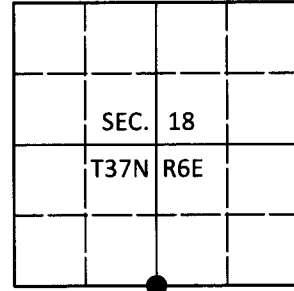
Stamp  
 3706180020

**U.S. PUBLIC LAND SURVEY MONUMENT RECORD**

Note: This form is intended and designed to fulfill all requirements of Wisconsin Administrative Code, Chapter A-E 7.08 U.S. Public Land Survey Monument Record (3)(a-i).

(a) CORNER LOCATION  
 1/4 Cor. of Secs. 18 & 19  
 Township 37 North  
 Range 6 East of the 4th P.M.  
 Town of Cassian  
 County of Oneida

WISCRS - Oneida County  
 N: 183,376.95 USft  
 E: 168,148.85 USft  
 Datum: NAD 83(2011)  
 GNSS Method: RTN - Direct  
 GNSS Control: WISCORS VRS



(b) HISTORY OF ORIGINAL CORNER ESTABLISHMENT

Original Surveyor: \_\_\_\_\_ Original Accessories: \_\_\_\_\_  
 Date of Survey Commenced: \_\_\_\_\_ See previous USPLS Monument Record  
 Completed: \_\_\_\_\_

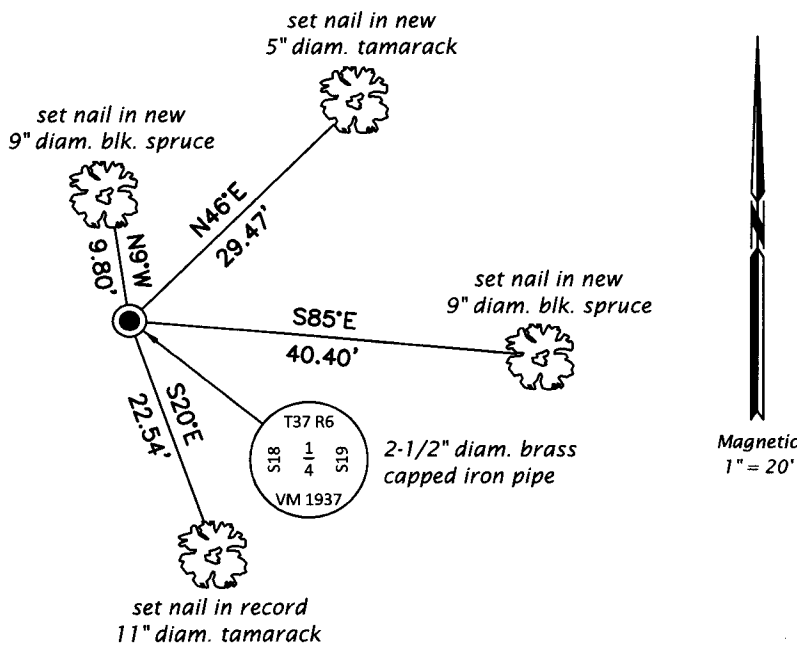
(b)(f)(g)(h) Description of monument found at this corner and if it was accepted, state all evidence (material, testimonial, occupational, plats, records, other monuments) used as a basis for accepting. If not accepted or if nothing was found, state evidence used as basis for establishing location. If re-established through lost corner proportionate methods, indicate all monuments, distances and directions used to establish. Indicate type of monument and sign post found or set.

*This is a perpetuation of a previous USPLS Monument Record by Milo E. Stefan, RLS dated December 17, 1995 and filed in the office of the Oneida County Register of Deeds. A complete history of the corner can be found on the previous monument record. I accept the previous location as a true and faithful perpetuation or reestablishment of the original corner location and further perpetuate it as follows.*

*July 13, 2018: I found and accepted the record monument, a 2-1/2" diam. iron pipe with a 2-1/2" diam. brass cap projecting 20" above the bog surface. All of the record bearing trees except that shown are gone. I found or established accessories as shown below. I found a white vinyl sign post bearing North, 1 ft.*

*The coordinate value shown has been verified by at least one of the following methods: 1) comparison to a previously GPS determined published value; 2) the value is the average of two or more GPS observations at a markedly different time; 3) one or more distances were measured back to the GPS observed corner from temporary GPS observed offset locations.*

(c)(d)(e) Plan view of corner with ties to at least 4 witness monuments. If in disagreement with previously established corner, show the distances between the two corners and also indicate the ties to the disputed.

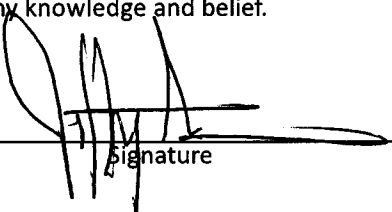


REGISTER OF DEEDS OFFICE  
 ONEIDA COUNTY  
 FILED

**AUG 16 2018**

KYLE J. FRANSON  
 REGISTER OF DEEDS

(i) I, Jeffrey W. Austin, Professional Land Surveyor No. S-1885, hereby certify that the corner location on this record was determined by me or under my direction and control and that this U.S. Public Land Survey Monument Record is correct and complete to the best of my knowledge and belief.

 \_\_\_\_\_  
 Signature Date Aug. 8, 2018