

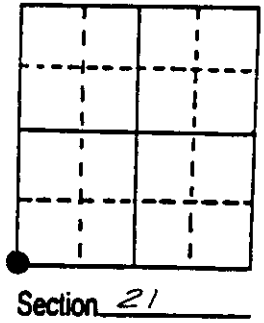
U.S. PUBLIC LAND SURVEY MONUMENT RECORD

Note: This form is intended and designed to fulfill all requirements of Wisconsin Administrative Code, Chapter A-E 7.08 U.S. Public Land Survey Monument Record (3) (a) (b) (c) (d) (e) (f) (g) (h) (i). An additional sheet may be added if necessary to conform with said requirements.

(a) Corner location: Township 37 North
 Range 6 East/West

Town/City/Village Cassion

County Oneida

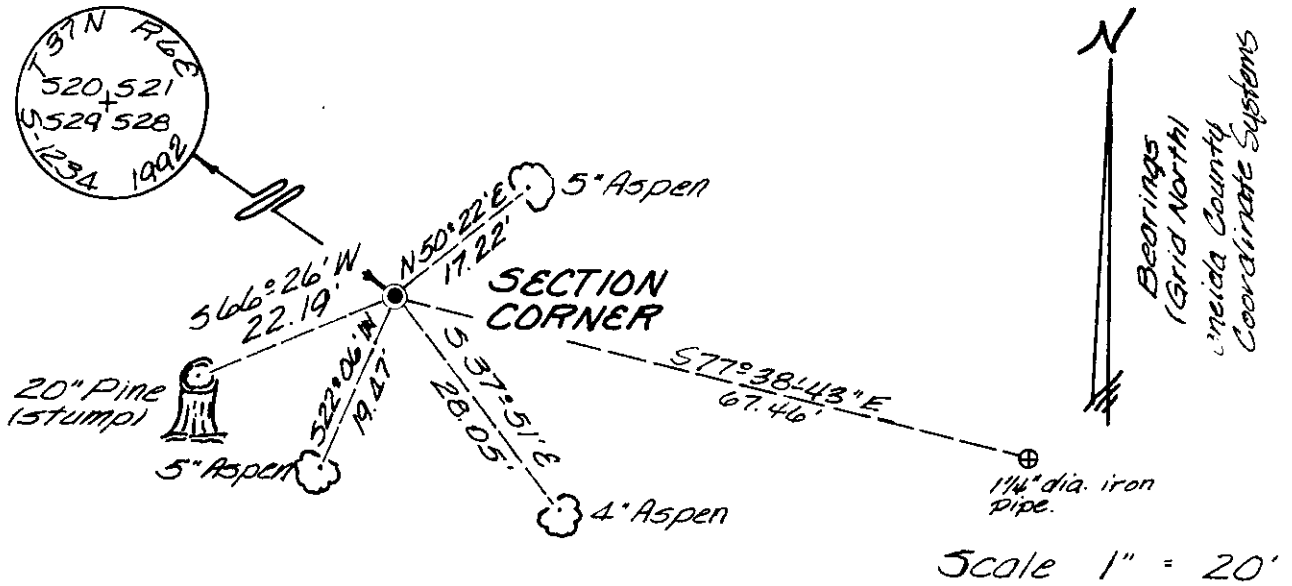


(b) (f) (g) (h) Description of monument found at this corner and if it was accepted, state all evidence (material, testimonial, occupational, plats, records, other monuments) used as a basis for accepting. If not accepted or if nothing was found, state evidence used as basis for establishing location. If reestablished through lost corner proportionate methods, indicate all monuments, distances and directions used to establish. Indicate type of monument found or set and sign post.

July 1st, 1863 - Joseph H. Jenkins, Deputy Surveyor, set corner Post to Sections 20, 21, 28, and 29, witnessed by two bearing trees: a 10" Birch bearing N44°W, 47 links; and an 8" Birch bearing S37°E, 20 links.

May 18th, 1992 - James D. Rein, Reg. Land Surveyor, found no evidence of original corner post and bearing trees. Corner position was re-established by three point control method using recovered corners to the North, East, and West. This method is most harmonious with the record meanders for the Tomahawk River. Quarter corner common to Sections 20 and 29 bears N85°33'11"W, 2644.75 feet. Corner common to Sections 21, 22, 27 and 28 bears N88°25'59"E, 5306.08 feet. Quarter corner common to Sections 20 and 21 bears N02°01'53"W, 2641.66 feet. Set capped 2" dia. x 30" long flange bottom aluminum monument for corner. Made new reference ties as shown in plan view and set plastic post 1 foot Northeast of corner. Note: a 1 1/4" dia. iron pipe set as an approximate corner by O.I. bears S77°38'43"E, 67.46 feet.

(c) (d) (e) Plan view of corner with ties to at least 4 witness monuments. If in disagreement with previously established corner, show the distances between the two corners and also indicate the ties to the disputed corner.



(i) I, James D. Rein, RLS No. 1234
 (type or print name) certify that the corner location on this record was determined by me or under my direction and control and that this U.S. Public Land Survey Monument Record is correct and complete to the best of my knowledge and belief.

James D. Rein Signature
 May 19th, 1992 Date



Stamp 3706200000

Index No. R-9