

# U.S. PUBLIC LAND SURVEY MONUMENT RECORD

Note: This form is intended and designed to fulfill all requirements of Wisconsin Administrative Code, Chapter A-E 7.08 U.S. Public Land Survey Monument Record (3)(a)(b)(c)(d)(e)(f)(g)(h)(i). An additional sheet may be added if necessary to conform with said requirements.

**(a) CORNER LOCATION:**

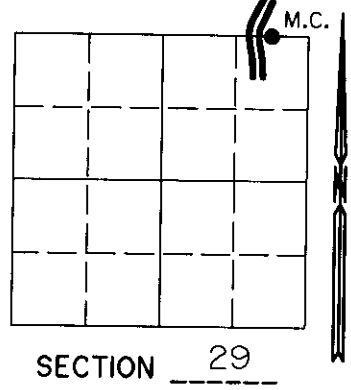
E. Meander corner of Sec. 29  
 Township 37 North  
 Range 6 East  
 Town/~~City/Town~~ Cassian  
 County of Oneida

State Plane Coordinates

X \_\_\_\_\_

Y \_\_\_\_\_

Datum Base \_\_\_\_\_

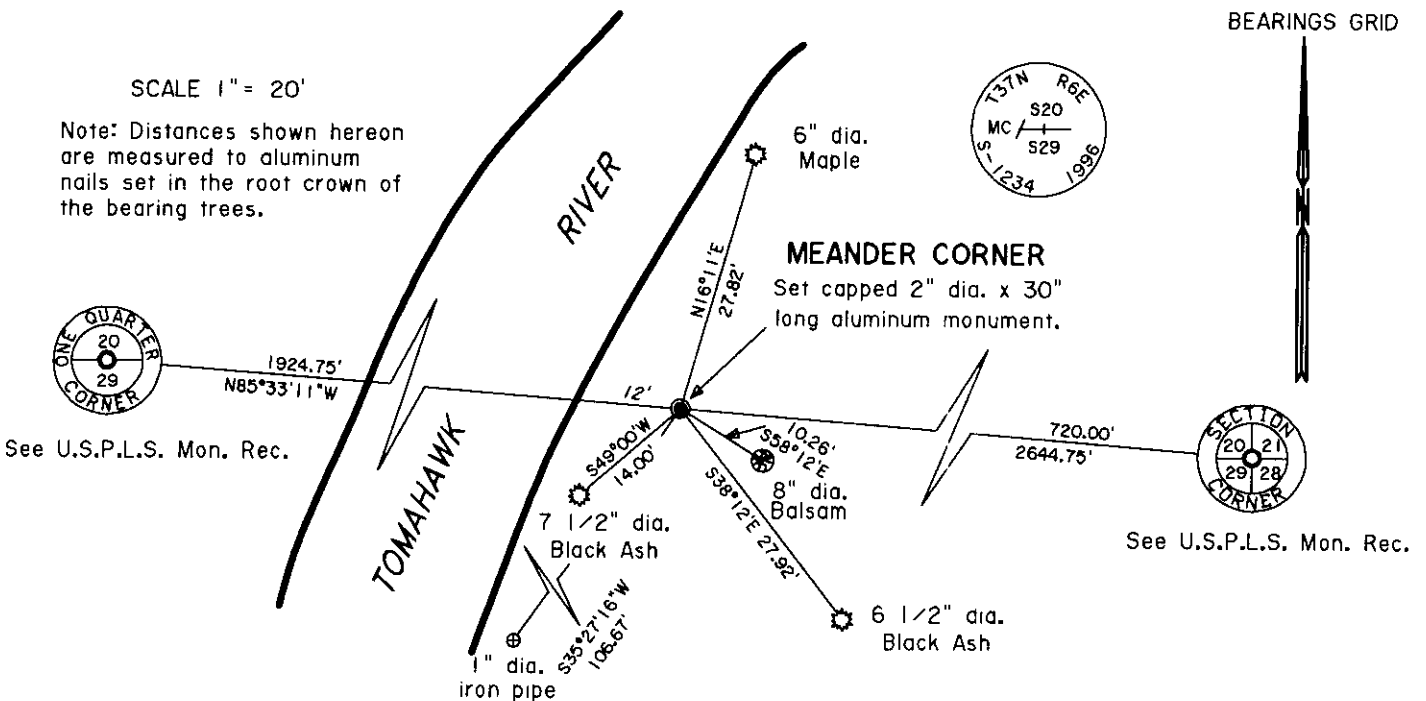


**(b)(f)(g)(h)** Description of monument found at this corner and if it was accepted, state all evidence (material, testimonial, occupational, plats, records, other monuments) used as a basis for establishing location. If not accepted or if nothing was found, state evidence used as basis for establishing location. If reestablished through lost corner proportionate methods, indicate all monuments, distances and directions used to establish. Indicate type of monument and sign post found or set.

July, 1863 - Joseph H. Jenkins, Deputy Surveyor, ran west on corrected line and at 10.85 chains set Meander Post, Witnessed by two bearing trees: an 8" fir, N32°E, 211ks and an 8" White Ash, S7°W 171ks.

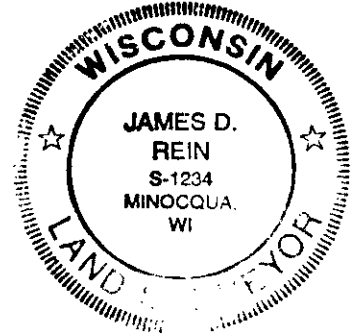
February, 1996 - James D. Rein, Registered Land Surveyor No. S-1234, found no evidence of original corner post and bearing trees. Corner position was established by placing a capped aluminum monument on line between the northeast corner of Section 29, and the North Quarter Corner of Section 29 near the easterly bank of the Tomahawk River. Note a 1" dia. iron pipe set by Owens-Illinois as an approximate Meander Corner bears S35°27'16"W 106.67'.

**(c)(d)(e)** Plan view of corner with ties to at least 4 witness monuments. If in disagreement with previously established corner, show the distance between the two corners and also indicate the ties to the disputed corner.



(i) I, James D. Rein, Registered Land Surveyor No. 1234, hereby certify that the corner location on this record was determined by me or under my direction and control and that this U.S. Public Land Survey Monument Record is correct and complete to the best of my knowledge and belief.

*James D. Rein*  
 Signature \_\_\_\_\_ Date 3/27/96



3706200005

INDEX NO. R 8-9