

Stock No. 26273

U. S. PUBLIC LAND SURVEY MONUMENT RECORD

INSTRUCTIONS :

This record shall show the location of the corner and shall include all of the following nine elements (a through i).

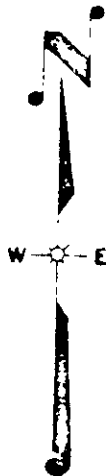
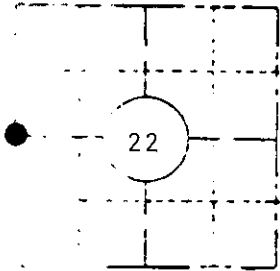
- a) Identify the corner by reference to the U.S. public land survey system.

RECORD INFORMATION

June 1863 - J. H. Jenkins, U.S. Deputy Surveyor Set 1/4 Section post witnessed by the following bearing trees:

- W. Pine 8" N55°W 2 links
- W. Pine 8" N49°E 15 links

Section 22
T37N R6E



October 27th, 1936 - V. M. Maine, Oneida County Surveyor set 1/4 stk. Oak stk. (on south side of road and near west edge of field, No B.T.'s near)

Note: corner position established by proportionate method.

Compared with all record data & accepted as correct.

Robert H. Hinkel

Oneida County Surveyor 27 Apr 1983

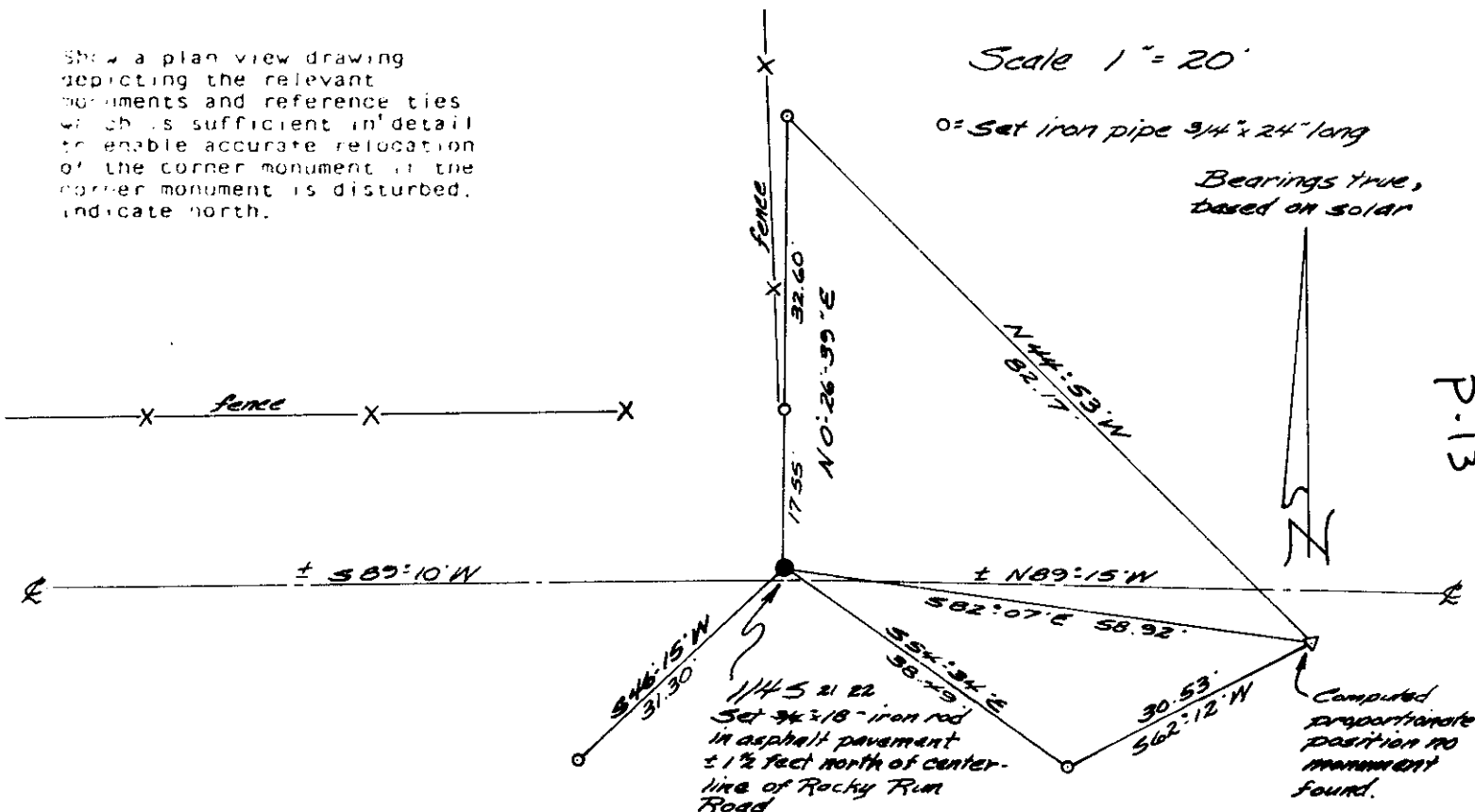
Describe any record evidence, monument evidence, occupational evidence, testimonial evidence, and any other material evidence you considered, and whether the monument was found or placed.

December 17th, 1982 -

Found no remaining evidence of the original post and bearing trees or subsequent restorations, thus I projected a line west from the East quarter corner through the existing Center quarter corner to intersect an old (+/-50 years) partly down north-south fence line. Set a 3/4" diameter x 18" long iron rod in the asphalt pavement, 1-1/2 feet north of the centerline to monument corner. This position is harmonious with the apparent long standing occupation and with Rocky Run Road as constructed. The centerline of Rocky Run Road makes a +/- 1-1/2 degree left deflection as it continues westerly.

- b) In the plan view drawing below, provide reference ties to at least 4 witness monuments, or the location is within a municipality, to at least 2 witness monuments. (Witness monument shall be made of concrete, natural stone, iron or other equally durable material, Describe witness monuments.

Show a plan view drawing depicting the relevant monuments and reference ties which is sufficient in detail to enable accurate relocation of the corner monument if the corner monument is disturbed. Indicate north.



Describe any material discrepancy between the location of the corner as restored or reestablished and the location of that corner as previously restored or reestablished by distance and direction. Show the discrepancy on the plan view drawing indicated above. Show the distances between the corner as previously restored or reestablished and (1) the corner as restored or reestablished and (2) to at least two of the witness monuments shown on the drawing in (d) above.

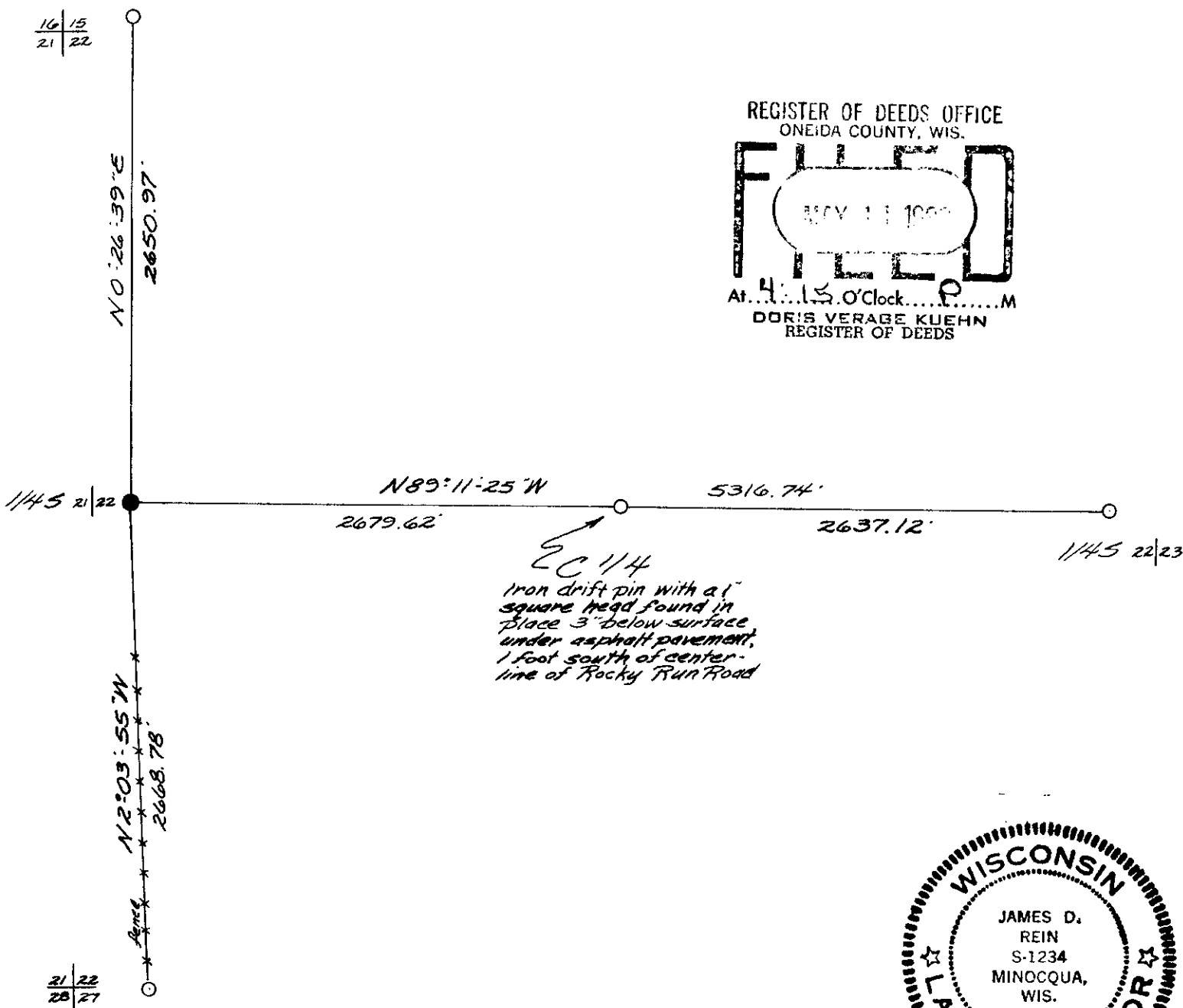
I accepted the harmoniously linking evidence of the monumented center quarter corner with the existing long established east-west town road (Rocky Run Road) old field and fence lines, evidence of their existence verified by the 1938 Quadrangle map as being the better evidence of the corner location rather than a proportionate position relied upon by V. M. Maine.

Was the corner restored through acceptance of an obliterated evidence locational or found perpetuated location?

I restored the corner through acceptance of an obliterated evidence locational as described in items (b) and (e).

(See plan view below)

How was the corner reestablished through use of proportionate methods or other method, including the directions and distances to other public land survey corners or evidence or used for proportioning in determining the corner location?



James D. Rein, Registered Land Surveyor No. S-1234

James D. Rein

December 29, 1982