

Stock No. 26273

U. S. PUBLIC LAND SURVEY MONUMENT RECORD

INSTRUCTIONS: This record shall show the location of the corner and shall include all of the following nine elements (a through i).

(a) Identify the corner by reference to the U.S. public land survey system.

RECORD INFORMATION

June 1863 - J. H. Jenkins, U. S. Deputy Surveyor
Set 1/4 Section post witnessed by the following bearing trees:

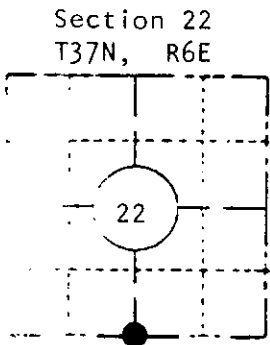
Blk Pine 8" N48°E, 25 links
Aspen 10" S28°E, 14 links

June 12th, 1906, D. H. Vaughan, Oneida County Surveyor found stumps of original trees and records a distance of 40.54 chains East to the southeast section corner.

Compared with all record data & accepted as correct.

Robert H. Vernal

Oneida County Surveyor 27 Apr 1983



LOCATION SKETCH

Location of landmark indicated by "●"



Describe any record evidence, monument evidence, occupational evidence, testimonial evidence, or any other material evidence you considered, and whether the monument was found or placed.

December 17th, 1982

Found no remaining evidence of the original post and bearing trees or subsequent restorations, thus, I projected a line South from the North quarter corner through the existing Center quarter corner to intersect with a line between the southwest and southeast Section corners. Set an Oneida County 2" diameter x 30" long aluminum monument extending 12 inches above the ground.

The resulting corner position agrees within 7 feet of the 1906 County Survey record.

In the plan view drawing below, provide reference ties to at least 4 witness monuments. If the location is within a municipality, to at least 2 witness monuments. (Witness monuments shall be made of concrete, natural stone, iron or other equally durable material, Describe witness monuments.

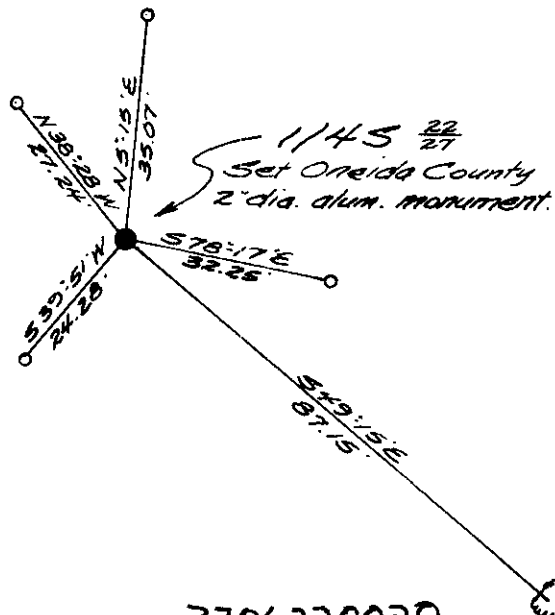
Show a plan view drawing depicting the relevant monuments and reference ties which is sufficient in detail to enable accurate relocation of the corner monument if the corner monument is disturbed. Indicate north.

○ = Set iron pipe 3/4" dia. x 24" long.

Bearings true, based on solar



Scale 1" = 30'



R-15

3706220020

Describe any material discrepancy between the re-established and the location of that corner by distance and direction. Show the discrepancy above. Show the distances between the corner and (1) the corner as restored or reestablished, and (2) the corner as restored or reestablished on the drawing in (d), above.

Was the corner restored through acceptance of an obliterated evidence location, or found perpetuated location?

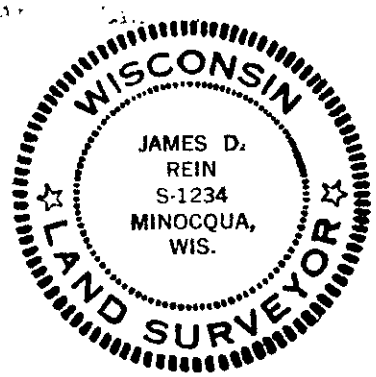
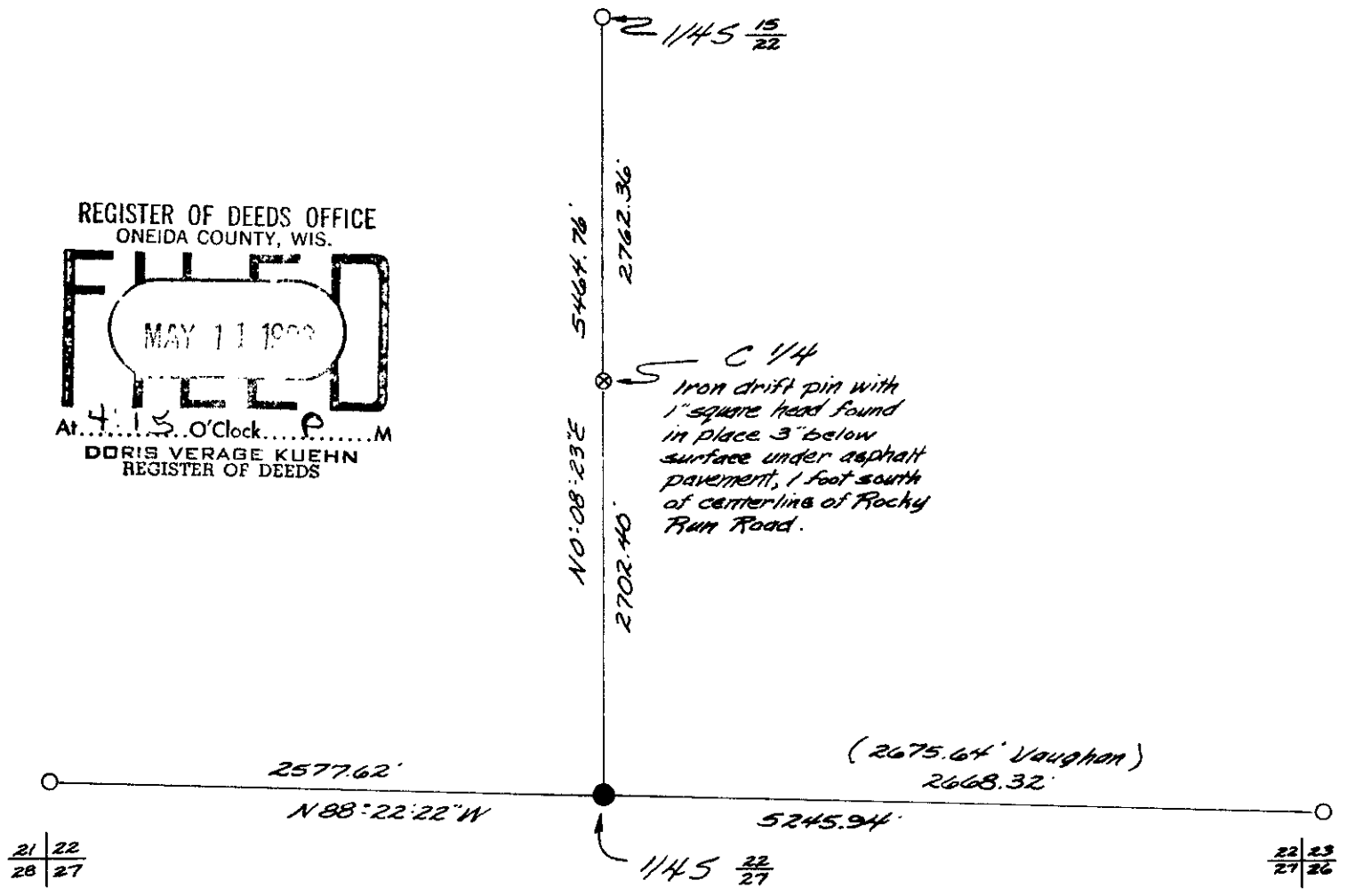
The corner position was restored through acceptance of an obliterated evidence location by intersecting the existing monumented north-south quarter line with a line between the southeast and southwest Section corners.

(See plan view below)

Was the corner reestablished through use of the appropriate method, including the directions and distances between the corners, or evidence or used for proportioning in determining the corner location?

No

REGISTER OF DEEDS OFFICE
ONEIDA COUNTY, WIS.
FILED
MAY 11 1982
At 4:15 O'Clock P.M.
DORIS VERAGE KUEHN
REGISTER OF DEEDS



James D. Rein, Registered Land Surveyor No. S-1234

James D. Rein

December 29th, 1982