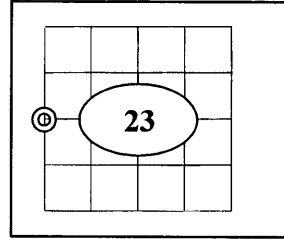




## U.S. PUBLIC LAND SURVEY MONUMENT RECORD

Note: This form is intended and designed to fulfill all requirements of Wisconsin Administrative Code Chapter A-E 7.08 (3) (a-i).

(a) Corner: West 1/4  
 Section: 23  
 Township: 37 N.  
 Range: 06 E.  
 Town: Cassian  
 County: Oneida



(b) History of Original Corner

Original Surveyor	Joseph H. Jenkins	Original B.T.'s	
Date of Survey	1863	8" Black Pine	N68°E 18 links
		10" Aspen	S68°W 69 links

- In 1863 Joseph H. Jenkins /GLO set a wood post as original section corner and made the above ties, all are now obliterated.

(f)(g)(h) Description of monument found at this corner and if it was accepted, state all evidence (material, testimonial, occupational, plats, records, other monuments) used as a basis for establishing location. If reestablished through last corner proportionate methods, indicate all monuments, distances and directions used to establish. Indicate type of monument and signpost found or set.

- In 1963 V. Main stated ¼ stake between 22 and 23 in center line of Town Rd and USH 51
- In 1959 Owens Illinois indicates corner in road.
- In 1970 D.O.T. indicates corner is 0.95' West of centerline of Highway 51 and set the following Reference monuments: N 41°E, 126.28'; N 41°E, 145.96'; S 41°W, 145.55'.
- J. Rein recovered iron bar in Highway.
- In 1987 Michael J. Romportal RLS (S-1624) found an iron bar in Highway 51 and the D.O.T. Reference marks. He set an additional Reference mark a nail in a 12" J. Pine, S 44°08'E, 128.70'. As located on tie sheet #P-17 (3706222000).
- In summer of 2008 the corner was obliterated due to Highway construction. In Nov. 2008 I (Allen P. Oleink RLS (S-2619) WI D.O.T.) reset a survey nail flush with highway pavement based on record distances from existing ties. The southwest R.M. was found crushed. I set two additional R.M.s: a ½" by 24" rebar with alum. cap S 46°24'22"W, 52.50': the same N 51°49'11"W, 56.34'.

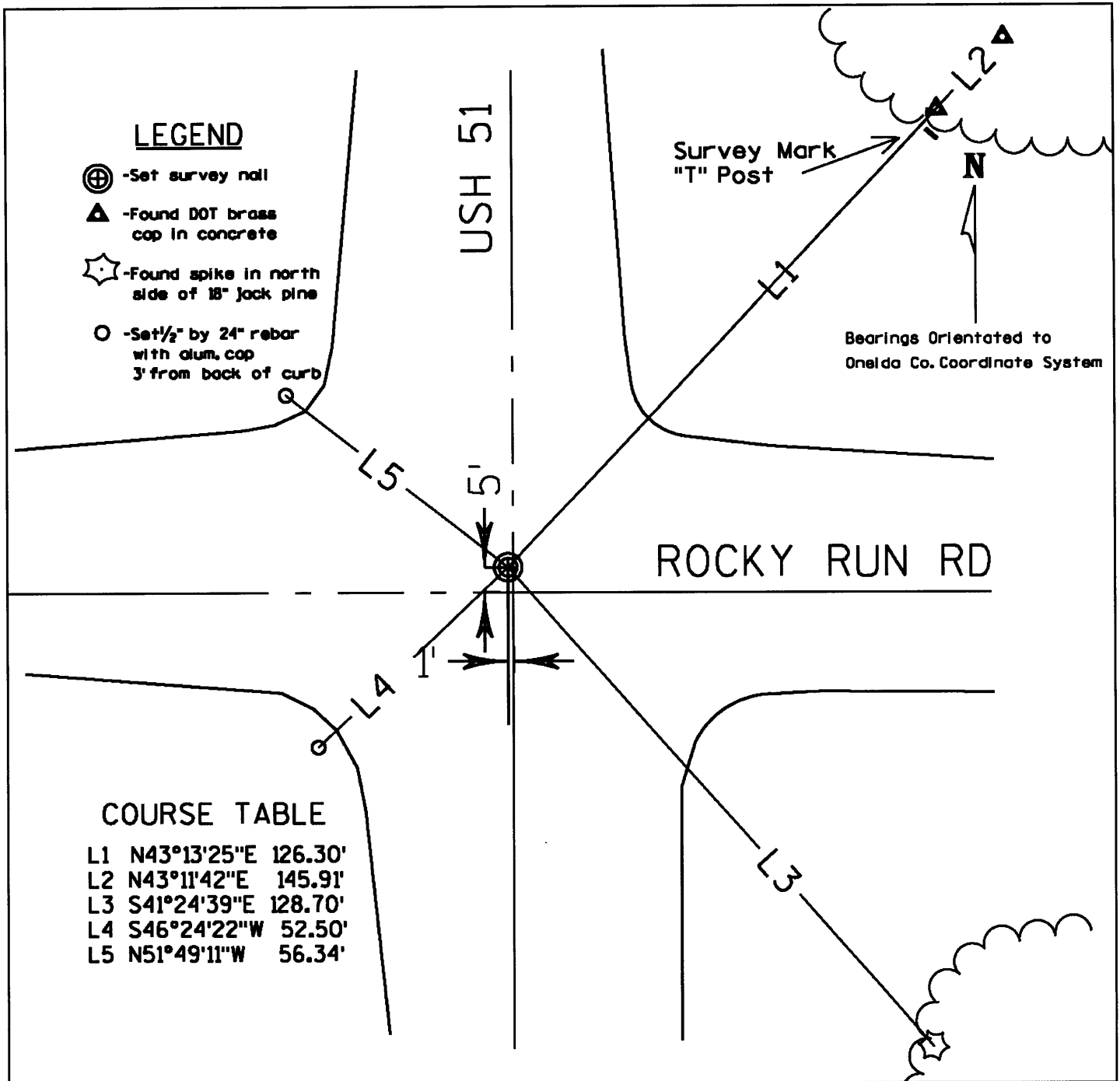
REGISTER OF DEEDS OFFICE  
 ONEIDA COUNTY, WIS.

**FILED**  
 FEB 19 2009

At \_\_\_\_\_ O'Clock \_\_\_\_\_ M  
**THOMAS H. LEIGHTON**  
 REGISTER OF DEEDS

3706 22 20 00

(c)(d)(e) Plan view of corner with ties to at least 4 witnesses. If in disagreement with previously established corner, show the distance between the two corners and also indicate the tie to the disputed corner.



(i) I, Allen P Oleinik, Registered Land Surveyor No 2619, hereby Certify that the corner location on this record was referenced by me And that this U.S. Public Land Survey Monument Record is correct and complete to the best of my knowledge and belief.

*Allen P. Oleinik* 2-17-09  
Signature Date



Index No. P-17

370622 2000