

LANDMARK MONUMENT PRESERVATION RECORD

Recorders Data

LOCATION: C1/4 corner of Section 22, Township 37 North, Range 6 East per Plat of Survey
of three(3) parcels in SENW by Foltz & Associates, Inc. of Minocqua, Wisconsin.

FORTY/GOVT LOT: SENW SECTION: 22 TOWNSHIP 37 NORTH RANGE 6 EAST/WEST

(~~CEN~~)(TOWN) OF: Cassian COUNTY OF: Oneida

Description of Landmark Monument and location history, if known:

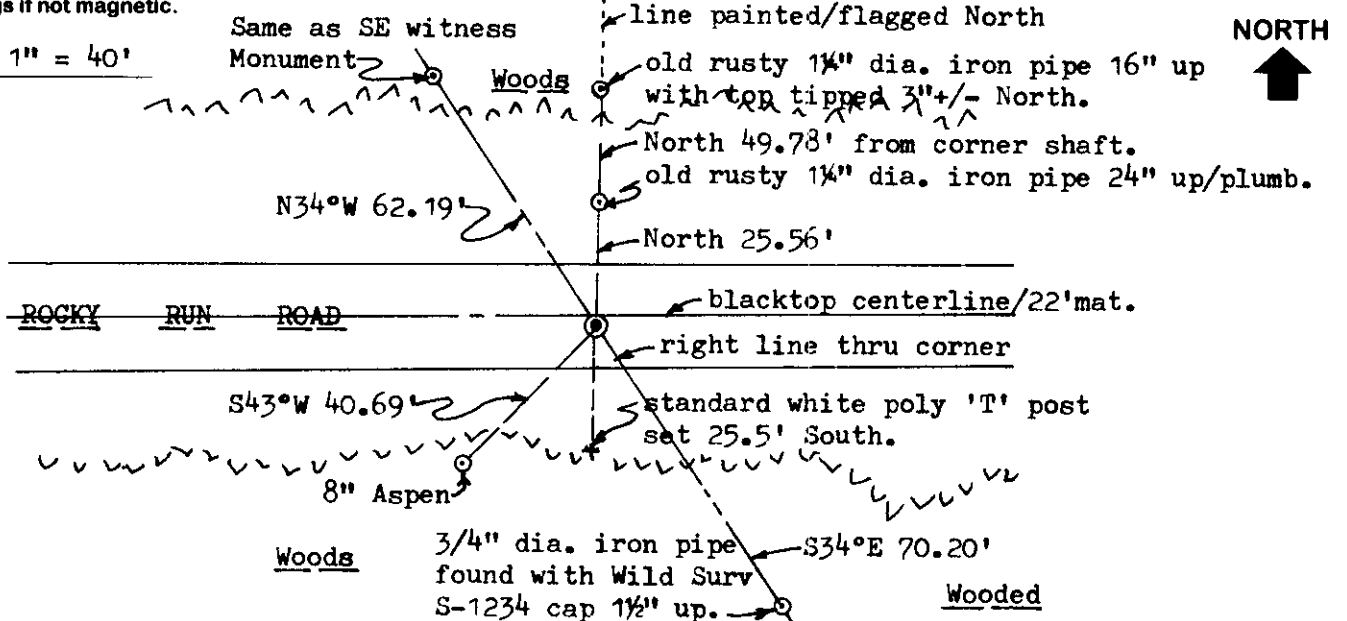
Top of undisturbed 3/4" dia. iron shaft found flush 28" South of existing blacktop roadway pavement per above record survey, filed as Plat of Survey B-4025 in Oneida County survey records. centerline

No other metallic evidence detected within roadway area.

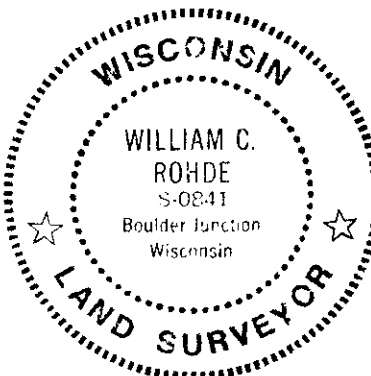
This recovery completed October 26, 1998 at the request of Oneida County Surveyor Mike Romportl; there were no direct witnesses other than vehicular drive-bys.

Plan view map of landmark monument location to scale with magnetic compass bearing and horizontal distance ties to a minimum of three (3) described witness or reference monuments of concrete, natural stone, metal, live bearing trees or equivalent material; indicate the basis for bearings if not magnetic.

SCALE: 1" = 40'



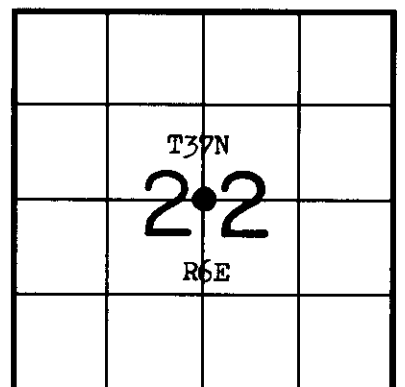
Unless otherwise indicated, all bearing tree ties are to a .25" dia. by 2.5" long PK nail with a 1.25" dia. steel washer driven into unblazed right face and a .25" dia. by 2.5" long PK nail with a 2" dia. steel washer stamped 'BT' is also driven into unblazed face of bearing tree at DBH; the basis for measured bearings is magnetic to nearest degree and all tie distances are horizontal measure to nearest 1/100th feet.



PROFESSIONAL LAND SURVEYOR CERTIFICATE:

I, William C. Rohde, hereby certify that I am a duly licensed Professional Land Surveyor in the State of Wisconsin, that the location of this Landmark Monument was determined by me, or under my direct supervision and control, for preservation purposes only and without any attestation of correctness, so that verification may be made by a subsequent land survey of public record; that this Landmark Monument Preservation Record is true and correct to the best of my knowledge and belief.

William C. Rohde Date: 12-8-98
 Signature



SECTION LOCATION MAP

INDEX NO. P-15

3706222020

RLS SEAL

SHEET NO. 1 OF 1