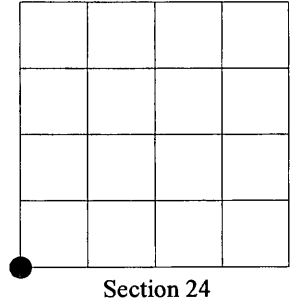


U.S. PUBLIC LAND SURVEY MONUMENT RECORD

NOTE: This form is intended and designed to fulfill all requirements of Wisconsin Administrative Code, Chapter A-E 7.08 U.S. Public Land Survey Monument Record (3)(a)(b)(c)(d)(e)(f)(g)(h)(i). An additional sheet may be added if necessary to conform with said requirements.

(a) Corner location: Township 37 North
 Range 6 East
 Town of Cassian
 Oneida County, Wisconsin

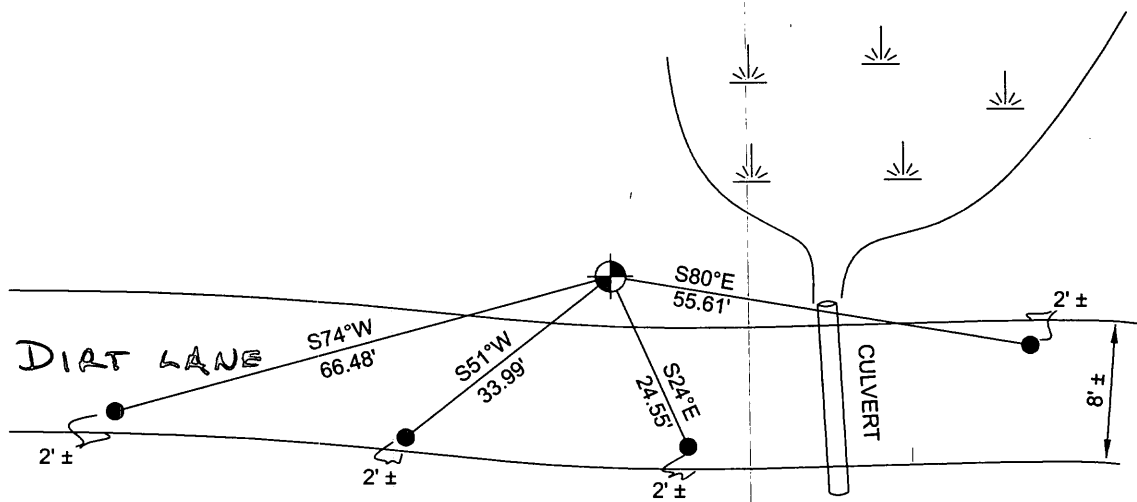


(b)(f)(g)(h) Description of monument found at this corner and if it was accepted, state all evidence (material, testimonial, occupational, plats, records, other monuments) used as a basis for accepting. If not accepted or if nothing was found, state evidence used as basis for establishing location. If reestablished through lost corner proportionate methods, indicate all monuments, distances and directions used to establish. Indicate type of monument found or set and sign post.

1863 - JOSEPH H. JENKINS SET POST COMMON TO SECTIONS 23, 24, 25, & 26, TOWN 37 NORTH, RANGE 6 EAST, AND SET FOLLOWING BEARING TREES.
 B. PINE 6", N02°W, 30 LINKS
 BLK. PINE 6", N03°E 24 LINKS

SEE BACK FOR ADDITIONAL HISTORY

(c)(d)(e) Plan view of corner with ties to at least 4 witness monuments. If in disagreement with previously established corner, show the distances between the two corners and also indicate the ties to the disputed corner.



LEGEND

- 2" DIA. X 4' LONG IRON PIPE WITH 4" CAP, SET
- 3/4" DIA. BY 18" LONG IRON ROD, SET

(i) I, Eugene Uttech, Registered Land Surveyor #S-1451, hereby certify that the corner location on this record was determined by me or under my direction and control and that this U.S. Public Land Survey Monument Record is correct and complete to the best of my knowledge and belief.

Eugene C. Uttech
 Signature

8/18/09
 Date



NORTH
 BEARINGS ARE MAGNETIC

Index No. R 21

3706230000

ADDITIONAL HISTORY:

- 1959-1964 Owens-Illinois surveyed Section 23. Map prepared by W.H.Stuth dated 8/14/86, referenced to survey by O.L. 1959-1964 and called for Southeast Corner of Section 23, "by others" found. The map also reference to the South ¼ corner and a stake at the Southeast corner of the SW.1/4 of the SE.1/4.
- 1959 Owens-Illinois surveyed Section 24. Map prepared by W.H.Stuth dated 3/10/87 and reference to surveyed in 1959. Also noted the Southwest corner "by others" found.
- 3/19/1963 Rhinelander Paper Co. surveyed Section 24 and reference to found iron pipe at the Southwest Corner of Section 24. County Surveyor files A412
- 1970 Owens-Illinois surveyed Section 26. Map prepared by W.H.Stuth dated 8/21/86 referenced to surveyed in 1970, found the Northeast corner of Section 26 "by others".
- 12/8/1975 Stuart Foltz, did survey in Section 25 and referenced to 2" dia. iron pipe found at the Southeast corner of Section 23. County Surveyor file C313
- 6/23/2009 MSA Professional Services, at site found 2" diameter iron pipe, 4 feet long, with a 4" cap, lying sideways on ground. The area had been excavated and a culvert places across 2 track dirt road near corner location. I took measurements to existing evidence and calculated a position for the corner. At calculated position I found old ribbon on trees going West and noted calculated position was on the edge of previous excavation for culvert. I hand excavated area: had 6" of surface roots, then hit gray clay soil. Found black soil stain 8" diameter that went down 2 ½ feet. I believe soil stain to be hole for iron pipe. This location was on edge of previous excavation with backhoe. The pipe could have been hooked and dragged out. This position agreed well with measurements by Stuart Foltz to the South and well within the probable accuracy of Owen-Illinois surveys in area. See summary sheet dated 7-30-09 provide to support location. I reset 2" dia. by 4' pipe in soil stain hole and tied off as shown.



370623 0000

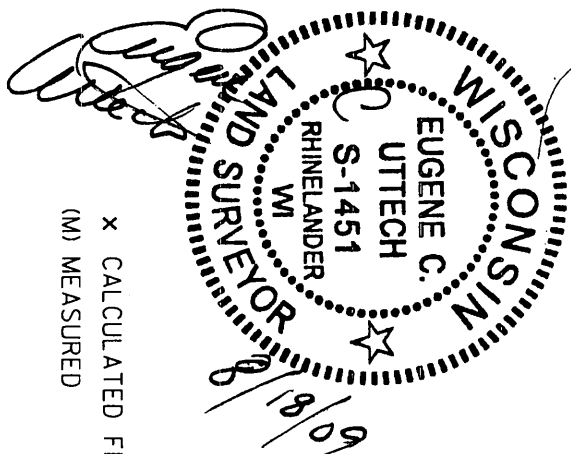


**TRANSPORTATION • MUNICIPAL
DEVELOPMENT • ENVIRONMENTAL**
1835 N. Stevens St. Rhinelander, WI 54501
715-362-3244 1-800-844-7854 Fax: 715-362-4116
Web Address: www.msa-ps.com
© MSA PROFESSIONAL SERVICES

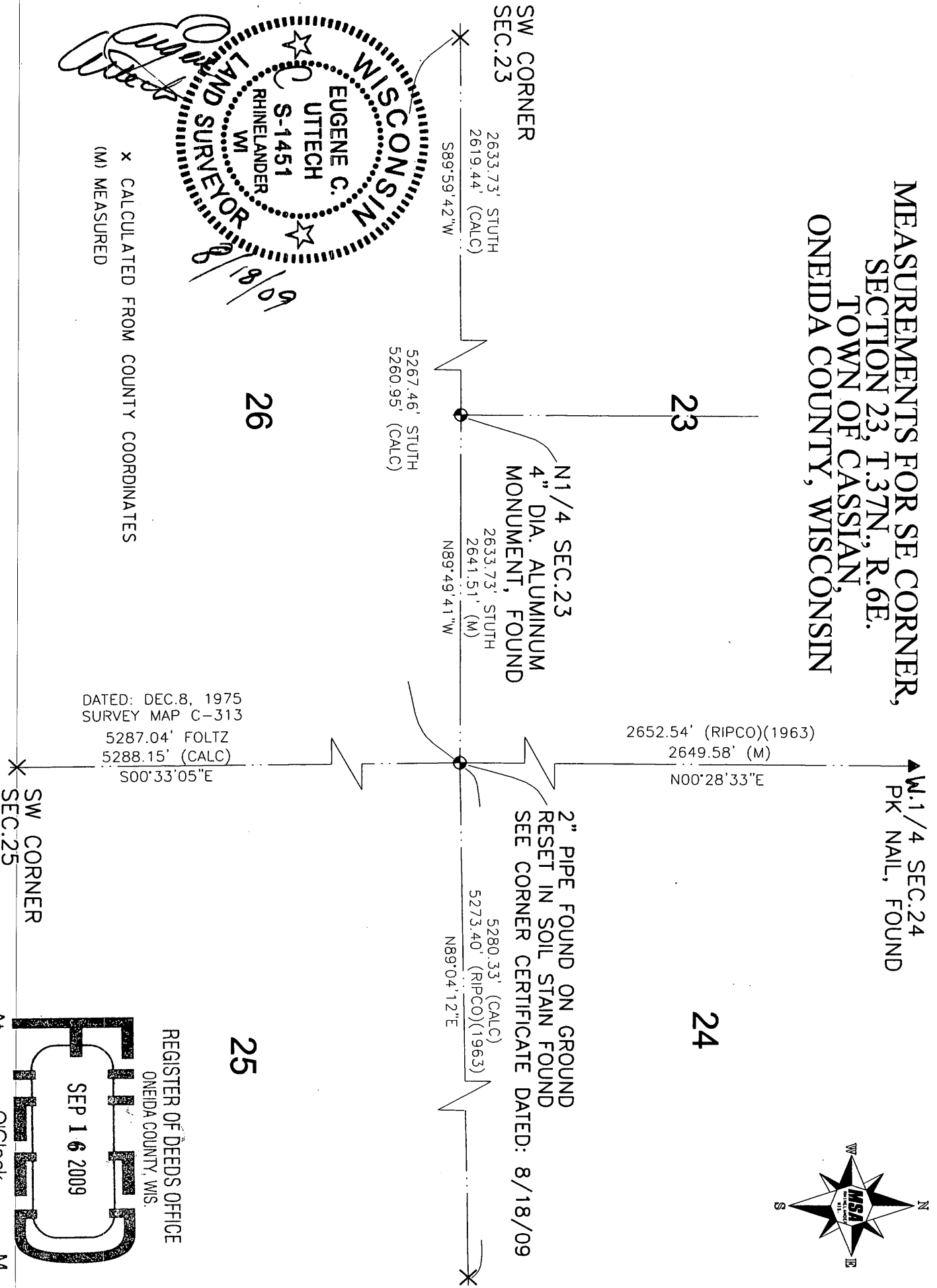
PROJECT NO. 10697001
DRAWN BY: SJZ
CHECKED BY: ECU
FILE: 10600'S/10690'S/10697001/CADD/SECTION.DGN
SHEET NO. 1 OF 1

SECTION SUMMARY SHEET

MEASUREMENTS FOR SE CORNER,
SECTION 23, T.37N., R.6E.
TOWN OF CASSIAN,
ONEIDA COUNTY, WISCONSIN



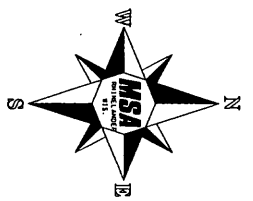
x CALCULATED FROM COUNTY COORDINATES
(M) MEASURED



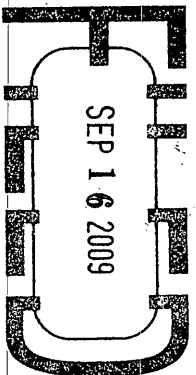
DATED: DEC. 8, 1975
SURVEY MAP C-313
5287.04' FOLTZ
5288.15' (CALC)
S00°33'05"E

2652.54' (RIPCO)(1963)
2649.58' (M)
N00°28'33"E

2" PIPE FOUND ON GROUND
RESET IN SOIL STAIN FOUND
SEE CORNER CERTIFICATE DATED: 8/18/09



REGISTER OF DEEDS OFFICE
ONEIDA COUNTY, WIS.



THOMAS H. LEIGHTON
REGISTER OF DEEDS

R-21

3706230000