

U.S. PUBLIC LAND SURVEY MONUMENT RECORD

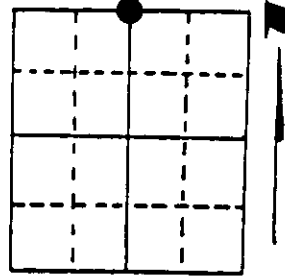
Note: This form is intended and designed to fulfill all requirements of Wisconsin Administrative Code, Chapter A-E 7.08 U.S. Public Land Survey Monument Record (3) (a) (b) (c) (d) (e) (f) (g) (h) (i). An additional sheet may be added if necessary to conform with said requirements.

(a) Corner location: Township 37 North

Range 6 East/West

Town/City/Village Cassian

County Oncida



Section 26

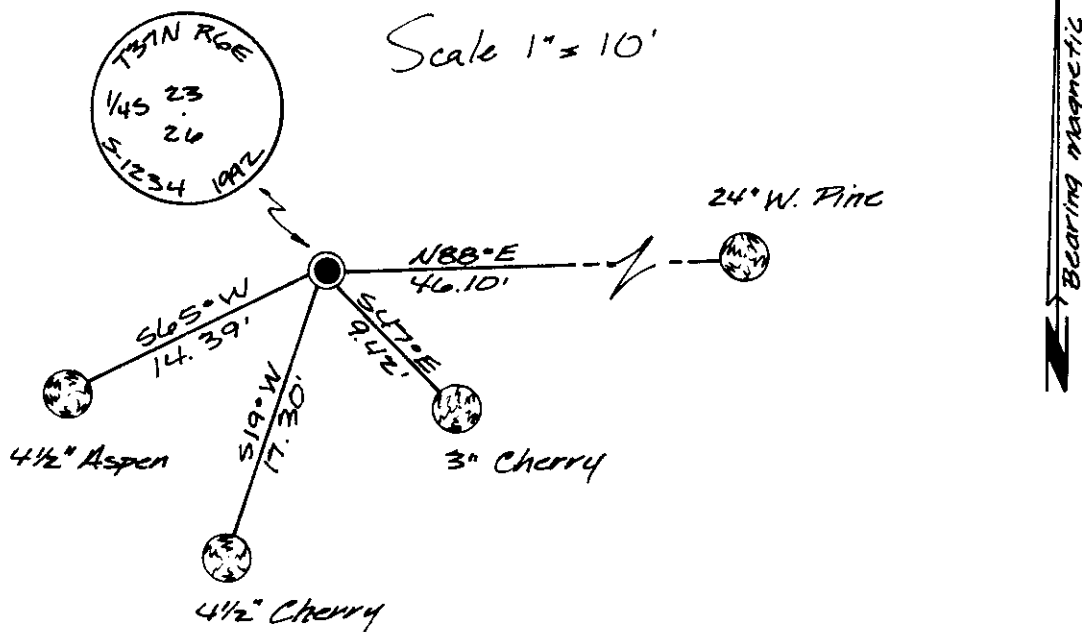
(b) (f) (g) (h) Description of monument found at this corner and if it was accepted, state all evidence (material, testimonial, occupational, plats, records, other monuments) used as a basis for accepting. If not accepted or if nothing was found, state evidence used as basis for establishing location. If reestablished through lost corner proportionate methods, indicate all monuments, distances and directions used to establish. Indicate type of monument found or set and sign post.

June 28th, 1863 - Joseph H. Jenkins, Deputy Surveyor, set $\frac{1}{4}$ post witnessed by two bearing trees: a 10" W. Pine N14°E, 14' links and a 10" W. Pine S12°W, 5 links.

1970 - Owens Illinois Survey - Identify the N $\frac{1}{4}$ Corner as being monumented by an iron pipe or cap witnessed by two bearing trees: a 14" J. Pine N38°E, 15.0' and an 11" J. Pine S47°E, 22.0'.

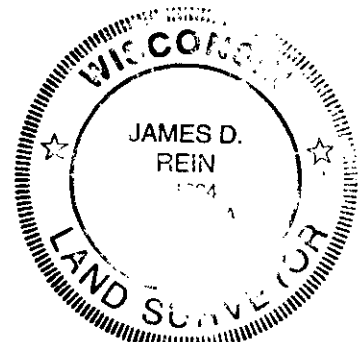
Aug. 12th, 1992 - James D. Rein, Registered Land Surveyor, recovered a $\frac{1}{4}$ " dia. iron pipe witnessed by two bearing trees: a fallen 12" J. Pine N32°E, 16.4' and a 12" J. Pine rotted stump S49°E, 23 $\frac{1}{2}$ '. I replaced the $\frac{1}{4}$ " dia. iron pipe with a capped 2" dia. x 30" long aluminum monument. Set plastic post 1' West and made reference ties as shown in plan view.

(c) (d) (e) Plan view of corner with ties to at least 4 witness monuments. If in disagreement with previously established corner, show the distances between the two corners and also indicate the ties to the disputed corner.



(i) I, James D. Rein, RLS No. 1234
 (type or print name) certify that the corner location on this record was determined by me or under my direction and control and that this U.S. Public Land Survey Monument Record is correct and complete to the best of my knowledge and belief.

James D. Rein Signature July 16th, 1992 Date



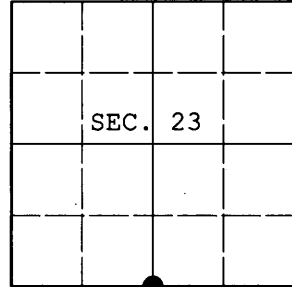
Stamp 3706 230020

Index No. R-19

U.S. PUBLIC LAND SURVEY MONUMENT RECORD

Note: This form is intended and designed to fulfill all requirements of Wisconsin Administrative Code, Chapter A-E 7.08 U.S. Public Land Survey Monument Record (3) (a) (b) (c) (d) (e) (f) (g) (h) (i). An additional sheet may be added if necessary to conform with said requirements.

(a) CORNER LOCATION: Plane Coordinates
 1/4 Cor. of Secs. 23 & 26 X:
 Township 37 North Y:
 Range 6 East of the 4th P.M. Datum:
 Town of Cassian County of Oneida



(b) HISTORY OF ORIGINAL CORNER ESTABLISHMENT

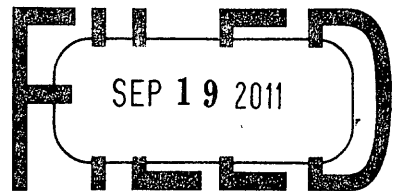
Original Surveyor: Joseph Jenkins Original Accessories:
 Date of Survey: Commenced June, 1863 white pine 10" N14°E, 14 lks.
 Completed July, 1863 white pine 10" S12°W, 5 lks.

(b) (f) (g) (h) Description of monument found at this corner and if it was accepted, state all evidence (material, testimonial, occupational, plats, records, other monuments) used as a basis for accepting. If not accepted or if nothing was found, state evidence used as basis for establishing location. If re-established through lost corner proportionate methods, indicate all monuments, distances and directions used to establish. Indicate type of monument and sign post found or set.

NOTE: This is a perpetuation of a previous USPLS Monument Record by James D. Rein, RLS dated July 16, 1992 and filed in the office of the Oneida County Register of Deeds. A complete history of the corner can be found on the previous monument record. I accept the previous location as a true and faithful perpetuation or reestablishment of the original corner location and further perpetuate it as follows.

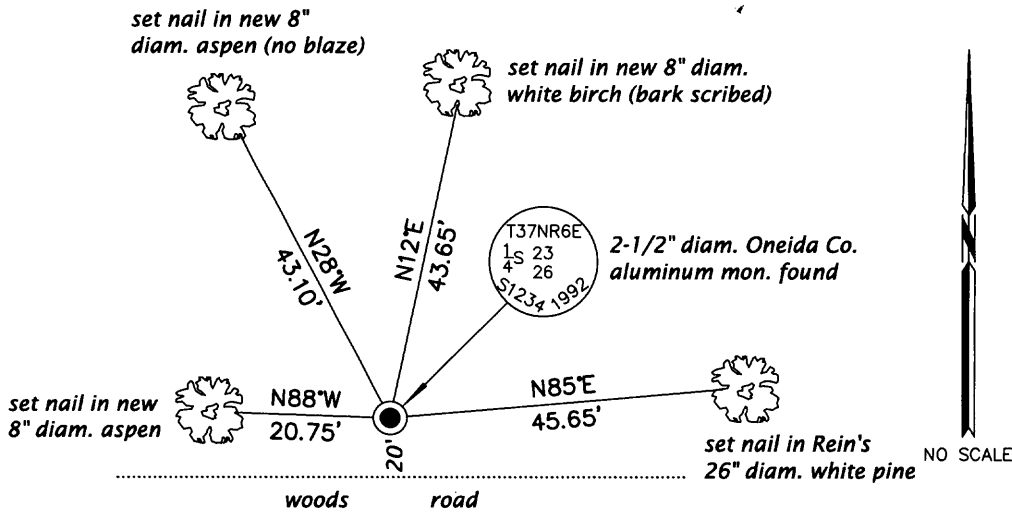
February 28, 2011: I found and accepted Rein's monument, a 2-1/2" diam. aluminum monument with Oneida Co. aluminum cap projecting 4" above the ground surface. Only one of Rein's bearing trees remain. I found or established accessories as shown below and found a white plastic sign post bearing Northeast, 1 ft. dist.

REGISTER OF DEEDS OFFICE
 ONEIDA COUNTY, WIS.

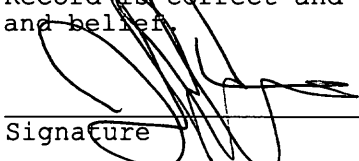


At _____ O'Clock _____ M
THOMAS H. LEIGHTON
 REGISTER OF DEEDS

(c) (d) (e) Plan view of corner with ties to at least 4 witness monuments. disagreement with previously established corner, show the distances between the two corners and also indicate the ties to the disputed.



(i) I, Jeffrey W. Austin, Registered Land Surveyor No. S-1885, hereby certify upon honor that the corner location on this record was determined by me or under my direction and control and that this U.S. Public Land Survey Monument Record is correct and complete to the best of my knowledge and belief.


 Signature

SEP. 10, 2011
 Date

