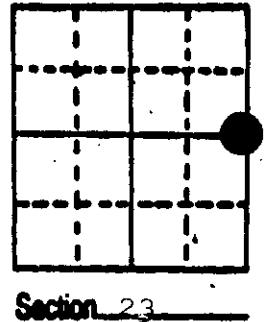
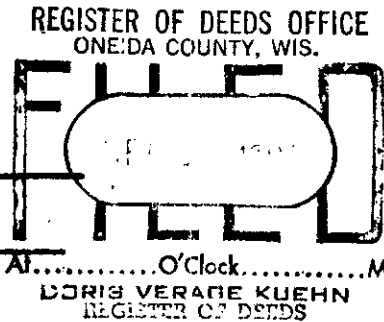


# U.S. PUBLIC LAND SURVEY MONUMENT RECORD

**Note:** This form is intended and designed to fulfill all requirements of Wisconsin Administrative Code, Chapter A-E 5.02, U.S. Public Land Survey Monument Record (3) (a) (b) (c) (d) (e) (f) (g) (h) (i). An additional sheet may be added if necessary to conform with said requirements.

(a) Corner location: Township 37 North  
 Range 6 East/West  
 Town/City/Village Cassian  
 County Oneida

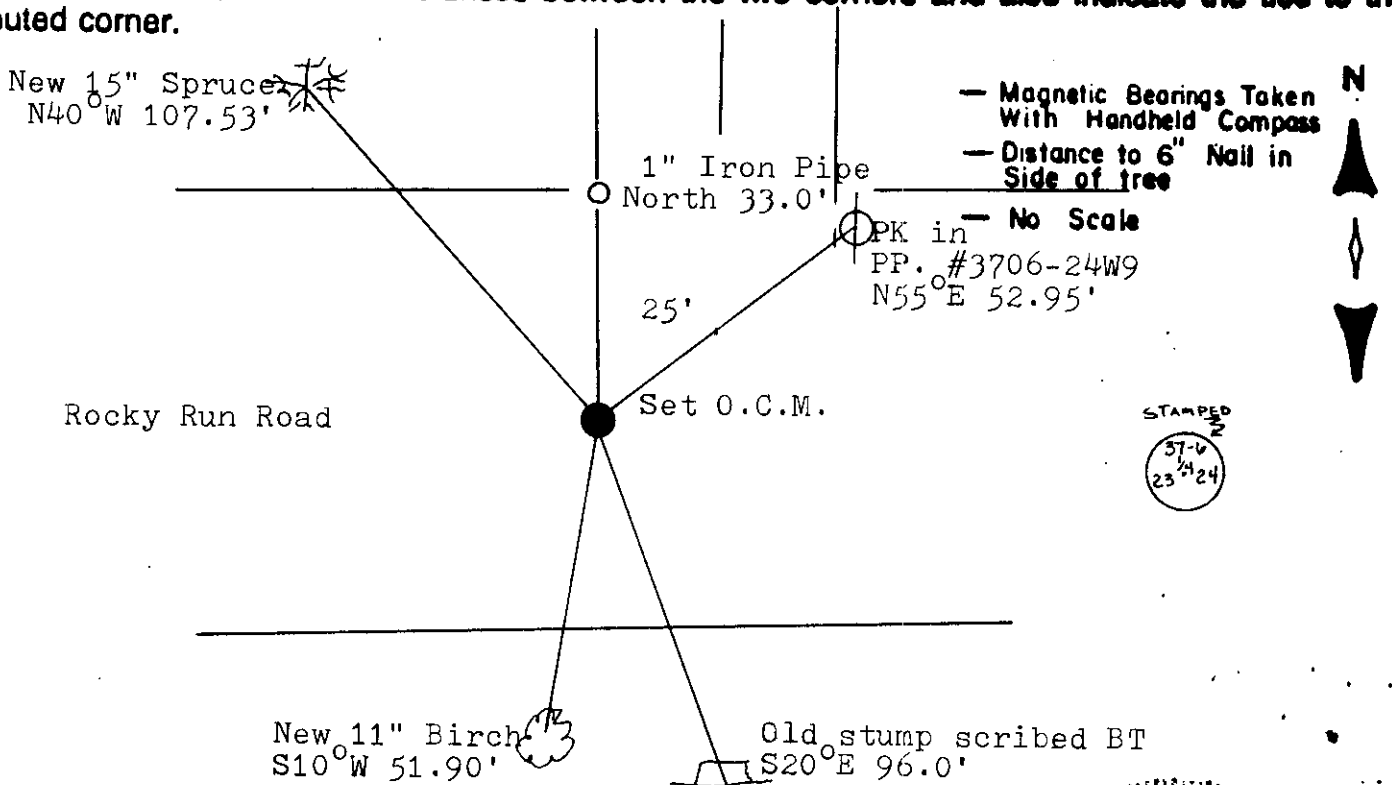


Section 23

(b) (f) (g) (h) Description of monument found at this corner and if it was accepted, state all evidence (material, testimonial, occupational, plats, records, other monuments) used as a basis for accepting. If not accepted or if nothing was found, state evidence used as basis for establishing location. If reestablished through lost corner proportionate methods, indicate all monuments, distances and directions used to establish.

- 1863 Jenkins established original corner at 40.00 ch. B.T.s aspen 12 S 85 W 13; Aspen 10 S 28 W 14.
- 1936 V. Maine state he went to  $\frac{1}{4}$  corner between 23 and 24 said to be center of Town Road E-W (80.96 East from  $\frac{1}{4}$  stk. between 22 and 23.) An old fence runs North 2702' to corner 23-24-13,14.
- 1954 J. Abernathy indicates corner in road B.T. J. Pine S 20 E 96.0.
- 1963 Ripco indicates corner in Road.
- 1959 Owens Illinois indicates corner in Road by others, dist. to  $C\frac{1}{4}$  2662.44' and dist. to  $\frac{1}{16}$  North = 1284.69.
- 1987 I could not find a monument at the corner so I reestablished the corner from Owens Illinois dist. from the  $C\frac{1}{4}$  and Abernathy's B.T. The corner fell near the center line of the road, I set an Oneida Capped Monument and witnessed it as shown. This position checks closely with Maines Distance to the NE corner and  $W\frac{1}{2}$  of Section 23.

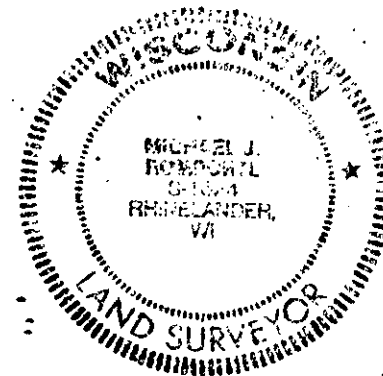
(c) (d) (e) Plan view of corner with ties to at least 4 witness monuments. If in disagreement with previously established corner, show the distances between the two corners and also indicate the ties to the disputed corner.



(i) I, Michael J. Romportl  
 (type or print name) certify that the corner location on this record was determined by me or under my direction and control and that this U.S. Public Land Survey Monument Record is correct and complete to the best of my knowledge and belief.

Michael J. Romportl 3/23/87  
 Signature Date

GENISOT & ASSOCIATES INC.  
 1512 EAGLE ST., RHINELANDER, WIS.



Folder No. P-21

3706232000