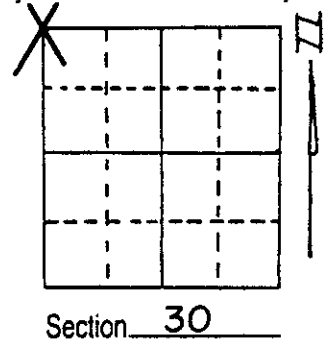


U.S. PUBLIC LAND SURVEY MONUMENT RECORD

Note: This form is intended and designed to fulfill all requirements of Wisconsin Administrative Code, Chapter A-E 5.02, U.S. Public Land Survey Monument Record (3) (a) (b) (c) (d) (e) (f) (g) (h) (i). An additional sheet may be added if necessary to conform with said requirements.

(a) Corner location: Township 37 North
 Range 7 East ~~West~~
 Town/~~City/Village~~ CASSIAN
 County ONEIDA

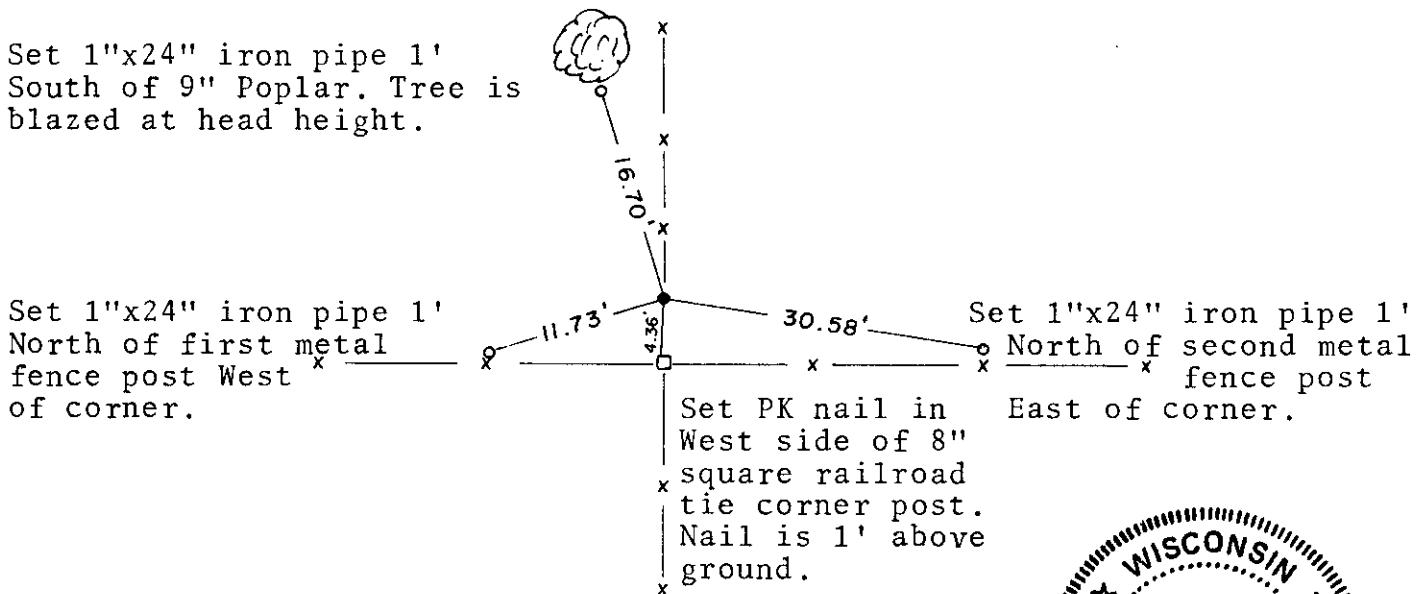


(b) (f) (g) (h) Description of monument found at this corner and if it was accepted, state all evidence (material, testimonial, occupational, plats, records, other monuments) used as a basis for accepting. If not accepted or if nothing was found, state evidence used as basis for establishing location. If reestablished through lost corner proportionate methods, indicate all monuments, distances and directions used to establish.

October 22, 1985. On this date, I recovered a 1 1/4" well point with 8" square rotting scribe post at corner. Post is scribed T37R6E and T37R7E. Location poster nailed to post. No desirable specks to use as bearing trees. Hence set 1"x24" iron pipes in locations referenced. Corner accepted as correct and used to set West 1/4 corner of this section by proportionate measurement.

See reverse side for section bearing and distance information.

(c) (d) (e) Plan view of corner with ties to at least 4 witness monuments. If in disagreement with previously established corner, show the distances between the two corners and also indicate the ties to the disputed corner.



(i) I, LaVerne H. Mosher,
 (type or print name) certify that the corner location on this record was determined by me or under my direction and control and that this U.S. Public Land Survey Monument Record is correct and complete to the best of my knowledge and belief.

LaVerne H. Mosher Signature October 30, 1985 Date



Index No. R-1

3706240000

