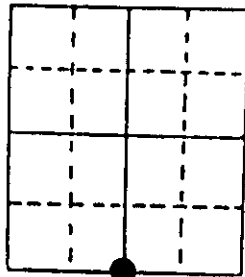


U.S. PUBLIC LAND SURVEY MONUMENT RECORD

Note: This form is intended and designed to fulfill all requirements of Wisconsin Administrative Code, Chapter A-E 7.08 U.S. Public Land Survey Monument Record (3) (a) (b) (c) (d) (e) (f) (g) (h) (i). An additional sheet may be added if necessary conform with said requirements.

(a) Corner location: Township 37 North
 Range 6 East/West

Town/City/Village Cassian
 County Oneida



Section 24

(b) (f) (g) (h) Description of monument found at this corner and if it was accepted, state all evidence (material, testimonial, occupational, plats, records, other monuments) used as a basis for accepting. If not accepted or if nothing was found, state evidence used as basis for establishing location. If reestablished through lost corner proportionate methods, indicate all monuments, distances and directions used to establish. Indicate type of monument found or set and sign post.

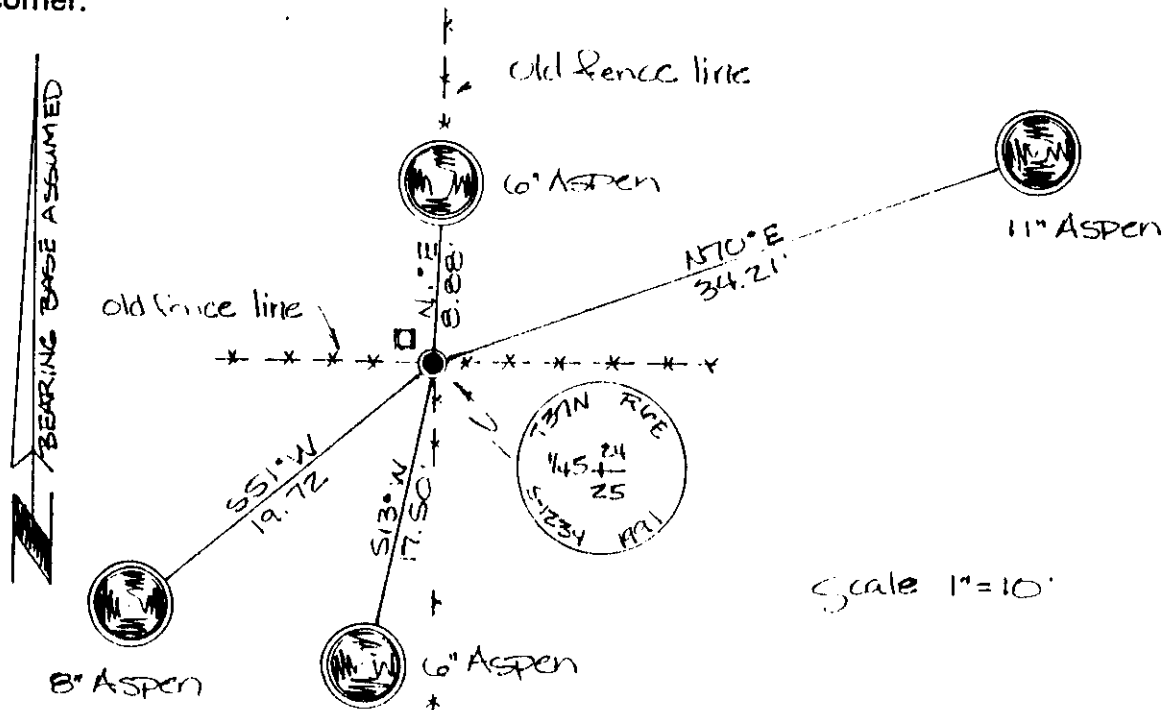
June 26th, 1863 - Joseph H. Jenkins, Deputy Surveyor, set $\frac{1}{4}$ post witnessed by two bearing trees: an 8" Black Pine S38°E, 15 links and by a 10" Black Pine N25°E, 38 links.

1959 - Owens-Illinois survey records identify corner at intersection of fence lines.

Jan. 3rd. 1963 - Rhinelander Paper Company map, Norman J. Loftus, Surveyor, identify the corner as accepted.

July 10th, 1991 - James D. Rein, RLS No. 1234, recovered old corner post with an Owens Illinois metal tag at an intersection of old fence lines. I accept the corner post position as the best evidence of the original corner location and set a 2 inch dia. x 30 inch long aluminum monument. Set a plastic post 1 foot Northwest of corner and made reference ties as shown in plan view.

(c) (d) (e) Plan view of corner with ties to at least 4 witness monuments. If in disagreement with previously established corner, show the distances between the two corners and also indicate the ties to the disputed corner.



(i) I, James D. Rein, Registered Land Surveyor No. 1234
 (type or print name) certify that the corner location on this record was determined by me or under my direction and control and that this U.S. Public Land Survey Monument Record is correct and complete to the best of my knowledge and belief.

James D. Rein Signature
 November 7th, 1992 Date



Index No. R-23