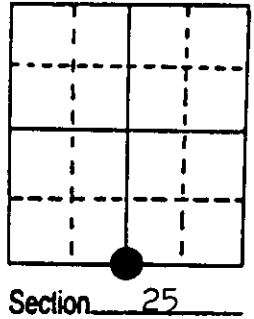


U.S. PUBLIC LAND SURVEY MONUMENT RECORD

Note: This form is intended and designed to fulfill all requirements of Wisconsin Administrative Code, Chapter A-E 7.08 U.S. Public Land Survey Monument Record (3) (a) (b) (c) (d) (e) (f) (g) (h) (i). An additional sheet may be added if necessary to conform with said requirements.

(a) Corner location: Township 37 North
 Range 6 East/West
 Town/ Cassian
 County Oneida

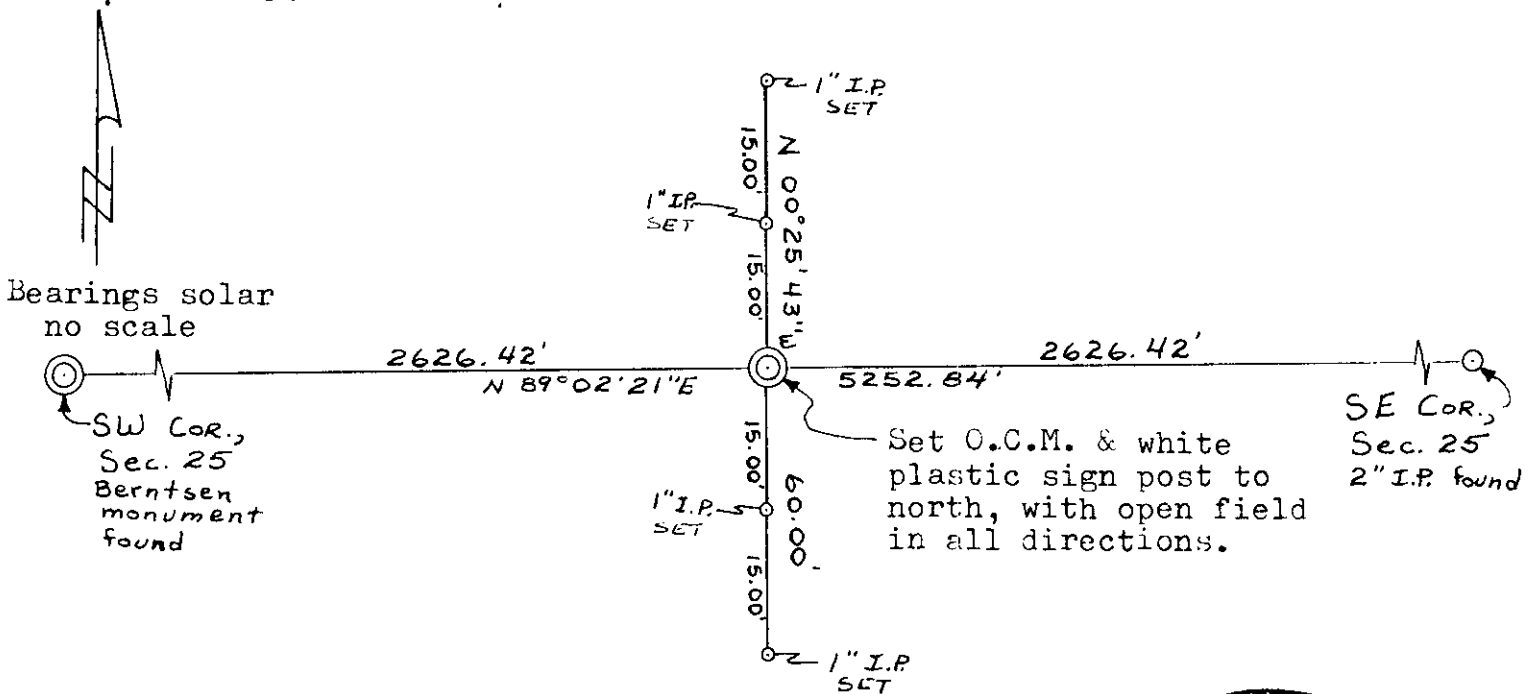


(b) (f) (g) (h) Description of monument found at this corner and if it was accepted, state all evidence (material, testimonial, occupational, plats, records, other monuments) used as a basis for accepting. If not accepted or if nothing was found, state evidence used as basis for establishing location. If reestablished through lost corner proportionate methods, indicate all monuments, distances and directions used to establish. Indicate type of monument found or set and sign post.

June 1863, Orig. cor. estab. by Joseph H. Jenkins, West corrected between 25 & 36.... 39.75 set 1/4 sec. post to Sections 25 & 36, B.T.s Y. Pine 10 North 22 & Y. Pine 10 S 26° W 26.

Sep. 1991, I found no evidence of the location of this corner, it being in a farm field. The field is in all directions with no fence lines or cultivation lines so determined it lost. I established the location for the corner by single proportion measurement between the 2 Section Corners to the east & west as shown below. I set a 2" x 30" Oneida County Capped Monument for the corner and witnessed it as shown below.

(c) (d) (e) Plan view of corner with ties to at least 4 witness monuments. If in disagreement with previously established corner, show the distances between the two corners and also indicate the ties to the disputed corner.



(i) I, Lester J. Schmit R.L.S. 1192
 (type or print name) certify that the corner location on this record was determined by me or under my direction and control and that this U.S. Public Land Survey Monument Record is correct and complete to the best of my knowledge and belief.

Lester J. Schmit 10 Oct 91
 Signature Date



Stamp 3706250020

Index No. V-23