

U.S. PUBLIC LAND SURVEY MONUMENT RECORD

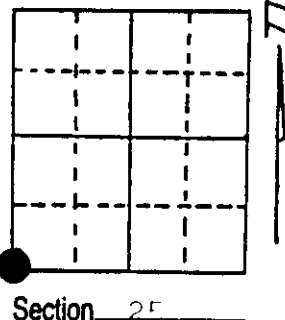
Note: This form is intended and designed to fulfill all requirements of Wisconsin Administrative Code, Chapter A-E 5.02, U.S. Public Land Survey Monument Record (3) (a) (b) (c) (d) (e) (f) (g) (h) (i). An additional sheet may be added if necessary to conform with said requirements.

(a) Corner location: Township 37 North

Range 6 East/West

Town/City/Village Cassian

County Oneida



(b) (f) (g) (h) Description of monument found at this corner and if it was accepted, state all evidence (material, testimonial, occupational, plats, records, other monuments) used as a basis for accepting. If not accepted or if nothing was found, state evidence used as basis for establishing location. If reestablished through lost corner proportionate methods, indicate all monuments, distances and directions used to establish.

1-1/2' iron pipe and squared wood post found in place. Corner was set by Stuart Foltz (Fisher, Inman & Foltz) in 1975
 Found Foltz witness iron rods
 3/4" iron rod N0°52.1'W, 63.68 feet
 3/4" iron rod N0°52.1'W, 156.25 feet

Accepted corner.

The original Gov't. Survey was performed by Joseph H. Jenkins in 1863. Set Wood lost:

Spruce	5"	N21°W	10 links
Spruce	10"	N85°E	39 links

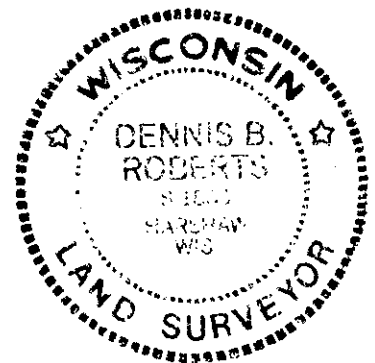
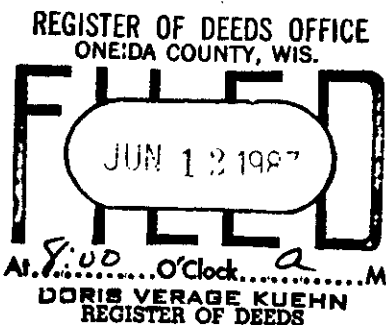
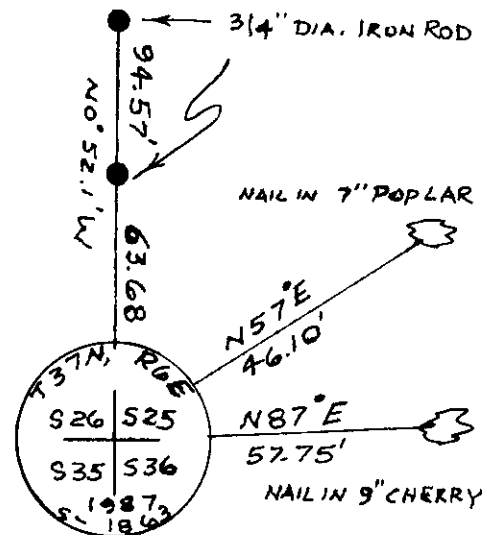
(c) (d) (e) Plan view of corner with ties to at least 4 witness monuments. If in disagreement with previously established corner, show the distances between the two corners and also indicate the ties to the disputed corner.

Replaced 1-1/2" iron pipe with Oneida County 2" diameter aluminum tablet stamped to identify corner.

Set nail in:

Poplar	7"	N57°E	46.10 feet
Cherry	9"	N87°E	57.75 feet

Set plastic sign post N45°W 1 foot



(i) I, Dennis E. Roberts
 (type or print name) certify that the corner location on this record was determined by me or under my direction and control and that this U.S. Public Land Survey Monument Record is correct and complete to the best of my knowledge and belief.

Dennis B. Roberts June 8, 1987
 Signature Date

Index No. V 21