

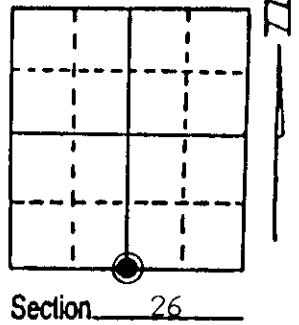
U.S. PUBLIC LAND SURVEY MONUMENT RECORD

Note: This form is intended and designed to fulfill all requirements of Wisconsin Administrative Code, Chapter A-E 7.08 U.S. Public Land Survey Monument Record (3) (a) (b) (c) (d) (e) (f) (g) (h) (i). An additional sheet may be added if necessary to conform with said requirements.

(a) Corner location: Township 37 North
 Range 6 East/West

Town/City/Village Cassian

County Oneida

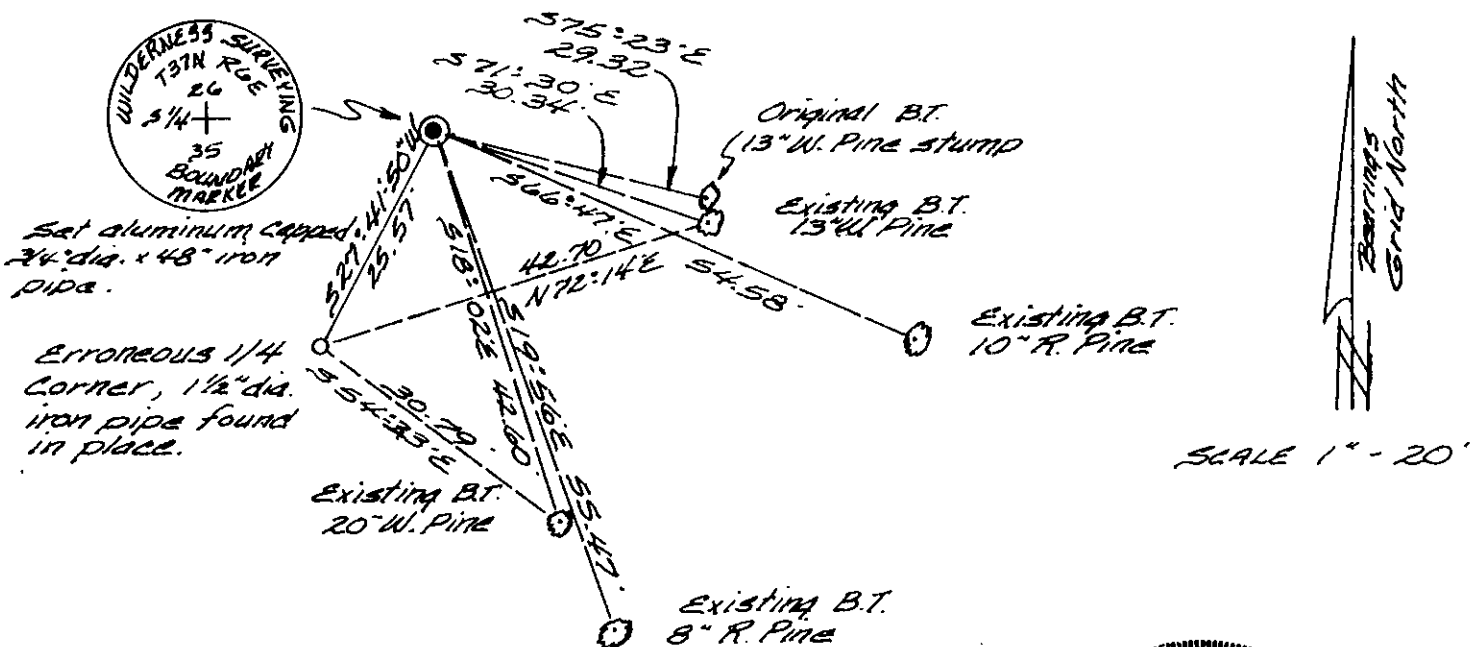


(b) (f) (g) (h) Description of monument found at this corner and if it was accepted, state all evidence (material, testimonial, occupational, plats, records, other monuments) used as a basis for accepting. If not accepted or if nothing was found, state evidence used as basis for establishing location. If reestablished through lost corner proportionate methods, indicate all monuments, distances and directions used to establish. Indicate type of monument found or set and sign post.

June 26th - July 8th, 1863: Joseph Jenkins, Deputy Surveyor, set 1/4 section post referenced by a 10" White Pine bearing S76°E 45 links (29.70 feet).

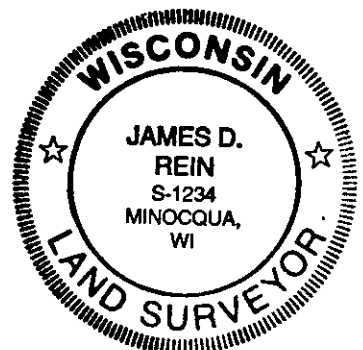
July 13th, 1992: James D. Rein, RLS No. 1234, recovered a 3" diameter x 24" long pointed Cedar post rotted flush in a peat wetland area. Remains of the original bearing tree, now a 13" White Pine stump, scribing plain on lower blaze, upper boxing fallen from stump but plainly evident. I replaced the post with an aluminum capped 3/4" diameter x 48" long iron pipe. This recovered quarter corner location does not agree with that position established by Stuart L. Foltz, RLS, in December of 1975. See sketch below for reference ties to bearing trees and to the erroneous quarter corner.

(c) (d) (e) Plan view of corner with ties to at least 4 witness monuments. If in disagreement with previously established corner, show the distances between the two corners and also indicate the ties to the disputed corner.



(i) I, James D. Rein, Registered Land Surveyor No. 1234
 (type or print name) certify that the corner location on this record was determined by me or under my direction and control and that this U.S. Public Land Survey Monument Record is correct and complete to the best of my knowledge and belief.

James D. Rein August 14th, 1992
 Signature Date



Index No. V-19

Stamp 3706260020