

# U.S. PUBLIC LAND SURVEY MONUMENT RECORD

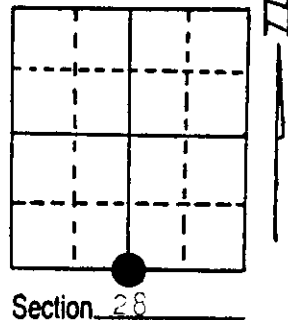
Note: This form is intended and designed to fulfill all requirements of Wisconsin Administrative Code, Chapter A-E 5.02, U.S. Public Land Survey Monument Record (3) (a) (b) (c) (d) (e) (f) (g) (h) (i). An additional sheet may be added if necessary to conform with said requirements.

(a) Corner location: Township 37 North

Range 6 East ~~West~~

Town/City/Village Cassian

County Oneida



(b) (f) (g) (h) Description of monument found at this corner and if it was accepted, state all evidence (material, testimonial, occupational, plats, records, other monuments) used as a basis for accepting. If not accepted or if nothing was found, state evidence used as basis for establishing location. If reestablished through lost corner proportionate methods, indicate all monuments, distances and directions used to establish.

Original survey - Joseph P. Jenkins in 1863..

Wood Post Set:

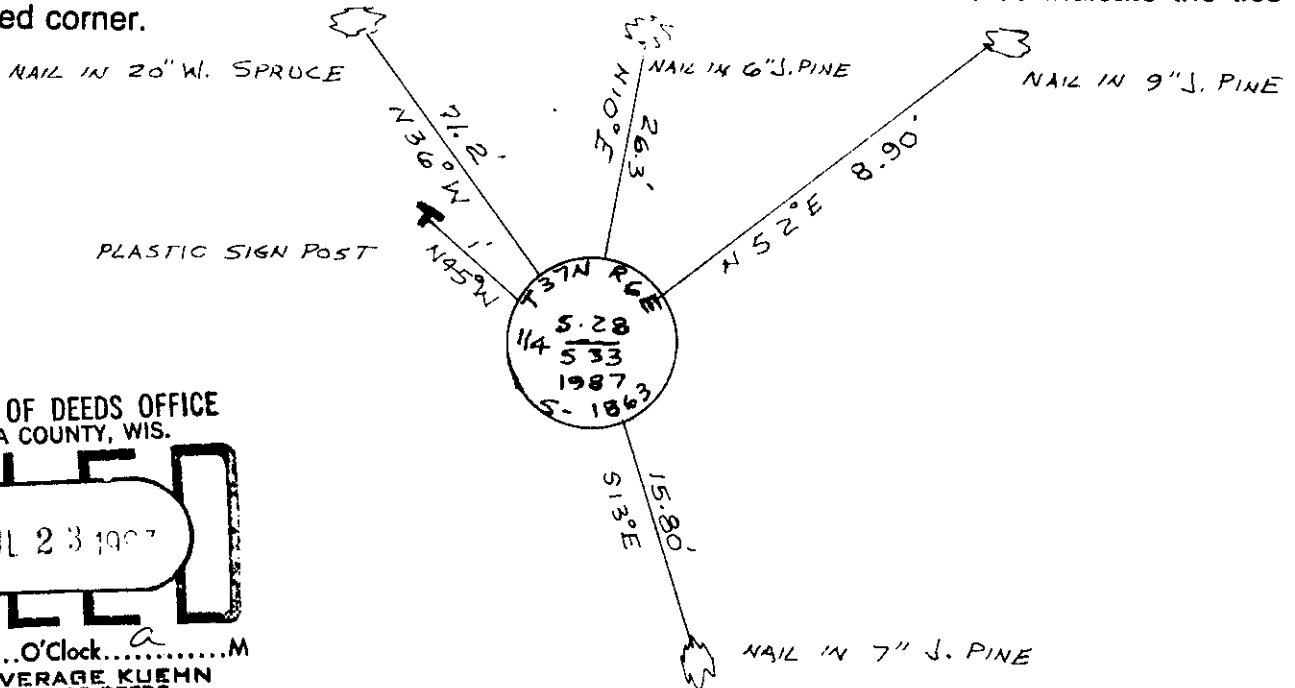
|            |     |       |         |
|------------|-----|-------|---------|
| White Pine | 8"  | N45°E | 17 lks. |
| White Pine | 10" | S17°W | 15 lks. |

Accepted 1-1/2" iron pipe found in place. Found old scribed post 1 foot north.

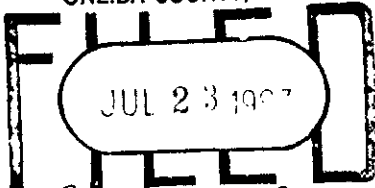
|                            |       |           |
|----------------------------|-------|-----------|
| Jack Pine 6" (dead)        | N16°W | 28.6 feet |
| Jack Pine 9"               | N52°E | 8.2 feet  |
| Jack Pine 13" (blown over) | N77°E | 22 feet   |

Replaced 1-1/2" iron pipe with Oneida County 2" diameter 30" long aluminum pipe, with a 3" diameter aluminum tablet stamped to identify corner.

(c) (d) (e) Plan view of corner with ties to at least 4 witness monuments. If in disagreement with previously established corner, show the distances between the two corners and also indicate the ties to the disputed corner.



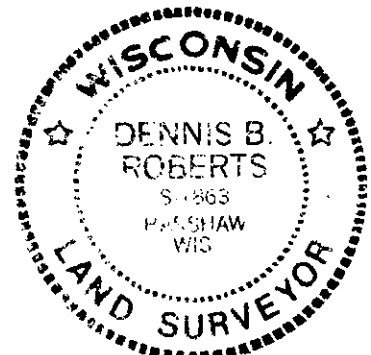
REGISTER OF DEEDS OFFICE  
ONEIDA COUNTY, WIS.



At 8:00 O'Clock a M  
DORIS VERAGE KUEHN  
REGISTER OF DEEDS

(i) I, Dennis B. Roberts  
(type or print name) certify that the corner location on this record was determined by me or under my direction and control and that this U.S. Public Land Survey Monument Record is correct and complete to the best of my knowledge and belief.

Dennis B. Roberts 7/9/87  
Signature Date

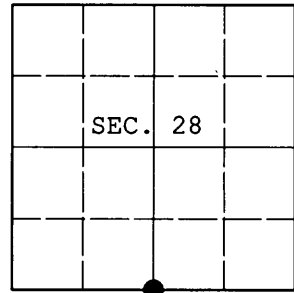


Index No. V-11  
TTL

**U.S. PUBLIC LAND SURVEY MONUMENT RECORD**

Note: This form is intended and designed to fulfill all requirements of Wisconsin Administrative Code, Chapter A-E 7.08 U.S. Public Land Survey Monument Record (3) (a) (b) (c) (d) (e) (f) (g) (h) (i). An additional sheet may be added if necessary to conform with said requirements.

(a) CORNER LOCATION: Plane Coordinates  
 1/4 Cor. of Secs. 28 & 33 X:  
 Township 37 North Y:  
 Range 6 East of the 4th P.M. Datum:  
 Town of Cassian County of Oneida



(b) HISTORY OF ORIGINAL CORNER ESTABLISHMENT

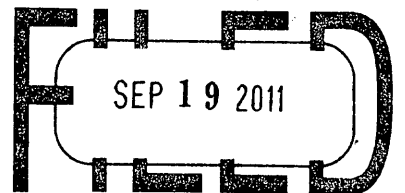
Original Surveyor: Joseph Jenkins Original Accessories:  
 Date of Survey: Commenced June, 1863 white pine 8" N45°E, 17 lks.  
 Completed July, 1863 white pine 10" S17°W, 15 lks.

(b) (f) (g) (h) Description of monument found at this corner and if it was accepted, state all evidence (material, testimonial, occupational, plats, records, other monuments) used as a basis for accepting. If not accepted or if nothing was found, state evidence used as basis for establishing location. If re-established through lost corner proportionate methods, indicate all monuments, distances and directions used to establish. Indicate type of monument and sign post found or set.

NOTE: This is a perpetuation of a previous USPLS Monument Record by Dennis B. Roberts, RLS dated July 9, 1987 and filed in the office of the Oneida County Register of Deeds. A complete history of the corner can be found on the previous monument record. I accept the previous location as a true and faithful perpetuation or reestablishment of the original corner location and further perpetuate it as follows.

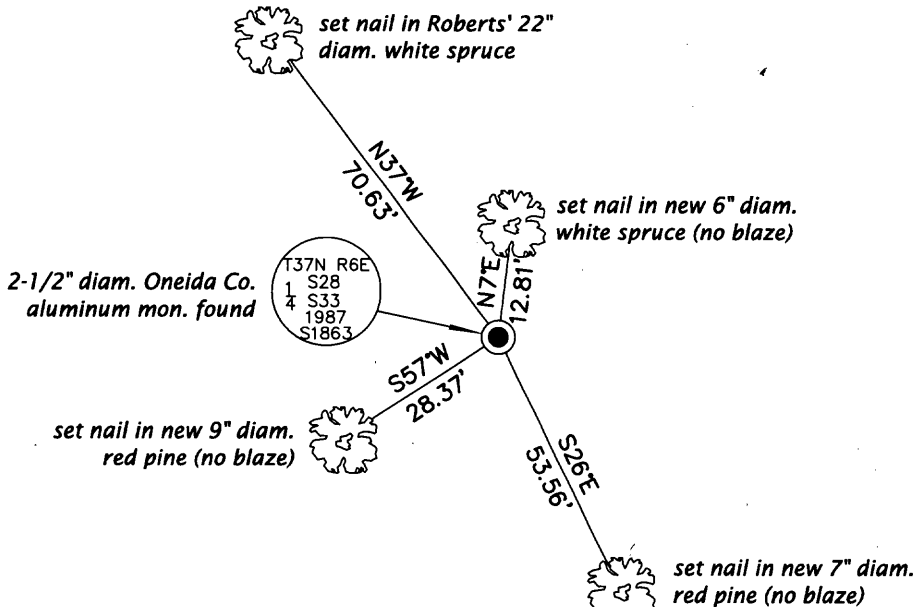
February 23, 2011: I found and accepted Roberts' monument, a 2-1/2" diam. aluminum monument with Oneida Co. aluminum cap projecting 8" above the ground surface. All of Roberts' jack pine are gone. I found or established accessories as shown below and found a white plastic sign post bearing Northwest, 1 ft. dist.

REGISTER OF DEEDS OFFICE  
 ONEIDA COUNTY, WIS.



At \_\_\_\_\_ O'Clock \_\_\_\_\_ M  
**THOMAS H. LEIGHTON**  
 REGISTER OF DEEDS

(c) (d) (e) Plan view of corner with ties to at least 4 witness monuments. If in disagreement with previously established corner, show the distances between the two corners and also indicate the ties to the disputed.



(i) I, Jeffrey W. Austin, Registered Land Surveyor No. S-1885, hereby certify upon honor that the corner location on this record was determined by me or under my direction and control and that this U.S. Public Land Survey Monument Record is correct and complete to the best of my knowledge and belief.

Signature: *[Handwritten Signature]* Date: SEP. 10, 2011



3706280020

3706280020 (INDEX NO. V-11)